



## 62nd ANNUAL WEST END SUMMER SHOW WOWS VISITORS WITH WONDERFUL WEATHER!



Some of the wonderful exhibits and scenes from the very successful show. See Genny Assersohn's report inside.....

*Photos: Angela Stockbridge*

*Photos: Simon Battensby*



## WINTERDOWN WI

**Winterdown WI** has enjoyed a quiet summer with two walks having to be cancelled - the first because of the rain and muddy conditions and the second because of the heat !! However we had two interesting outings to two very different historic buildings.

Seven members won a total of 12 prizes at the West End Flower Show with Margaret Dane winning the cup for her beautiful roses.

We went to Wimbledon Village on Wednesday 10<sup>th</sup> August. After visiting the library which has a lot of interesting original architectural features we went to the Pavilion in the Vin hotel in Cannizaro park for refreshments, followed by a walk in the gardens before visiting Southside House on the other side of Wimbledon Common.

Photo :  
Ann Tennant



This is a very "quirky" house full of reclaimed architectural and theatrical objects. Most of the house is in its original

state except for a large dining room extension which was built to accommodate a large collection of paintings inherited by the Pennington-Mellor-Munthe family. At one end of this room is a reclaimed large farmhouse fire place and from the ceiling hangs a beautiful crystal chandelier.

A mini bus trip to Frogmore on 25<sup>th</sup> August was a great success and all who went thoroughly enjoyed hearing from Rodney, our guide, about the history of the house and how much it is used and enjoyed by the Queen and other Royals. It was made more interesting for us as Colin Parrish had been to our July meeting to give a talk on Queen Victoria's colourful cousins having previously given a talk on Queen Victoria's daughters. After a walk in the grounds we ended up at the Farmhouse Shop for refreshments sitting outside in beautiful sunshine.

We are looking forward to our autumn bridge tea on Wednesday 26<sup>th</sup> October at 2.00pm in West End Village Hall and hope it will be well supported. At our next monthly meeting on 6<sup>th</sup> October will be florist Fleurs Amanda demonstrating Christmas themed arrangements.

**Winterdown WI meet on the first Thursday of the month at 8.00pm in West End Village Hall. Visitors are always very welcome.**



Frogmore House

Photo: Brenda Finn

Ann Tennant



## West End Playgroup & Forest School.

For children from 2 to 5 years

[www.westendplaygroup.org.uk](http://www.westendplaygroup.org.uk)

Tel: 01372 469157

## SURREY POLICE

### IMPORTANT PLEASE READ.....

Call 999 for Emergencies only.

Call 0800 555111 for Crimestoppers.

**Call 101 - Surrey Police for General Enquiries and non-urgent matters.**

This number will also transfer you to Esher Police

Station, which is open from

**09.00-17.00 hours Monday to Friday.**

### Beat Officers:

**Our new PCSO 13867 Nigel Oates**

**PCSO 15215 Vicky Holdaway**

**Officers can be contacted by dialling 101 or email:**

**Elmbridge@surrey.co.uk**

**Crime Reduction Adviser is**

**Elaine Burtenshaw 14613 Tel: 101 :**

email: [burtenshaw.14613@surrey.pnn.police.uk](mailto:burtenshaw.14613@surrey.pnn.police.uk)

**Debbie Smith FIN: 13330**

**Neighbourhood Team Coordinator, Surrey Police, Elm-**

**bridge Borough : Tel: 101 Extension: 38857**

email: [elmbridge@surrey.pnn.police.uk](mailto:elmbridge@surrey.pnn.police.uk)



Our annual burglary campaign is ongoing and more details can be found on our website at <http://www.surrey.police.uk/keeping-safe/protecting-your-property-or-business/home-and-garden-security>

**!!BEWARE!!..... THE BURGLARS ARE ABOUT! KEEP YOUR DOORS, WINDOWS, AND GARAGES SECURELY LOCKED.**



## WEST END BRIDGE CLUB



### Sticking the Overcall oar in

One of the main things I have learned recently is that, if an opponent has opened the bidding and you are thinking of an overcall, you do not necessarily have to have the points for a full opening bid. Your point count can be as low as eight or nine, down to an absolute minimum of six or seven. Of course you may have the points for a full-scale bid of your own, so your partner needs to be aware of this, and make allowances accordingly.

Let's have a look at the Overcall in Action. The first requirement is that you must have at least 5 cards in the suit you are overcalling in. You need also to possess some power in this suit. You would not overcall on a suit as mingy as Q 7 4 3 2, especially if you were vulnerable.

Andrew Robson, who has a bridge column in The Times and also in Country Life, has devised an acronym for this situation, which he calls the Suit Quality Overcall Test, or SQOT. This acronym is so ugly it has to be memorable. Here's how it works....

Add the number of cards in your suit to the number of honours in the suit, counting one for each honour (A,K,Q,J,10). Let's say you hold A Q 9 5 2. That's five cards plus 2 honours = 7. This means you can bid up to the level of the total tricks you are trying for, i.e. seven tricks in total, or one of a suit.

If you had held K J 9 8 4 2, that's six cards plus two honours = 8, you could have overcalled up to the level of eight total tricks, or two in a suit. (Incidentally, don't jump to your maximum allowance right away—try out the water first).

A number of advantages flow from a well-judged overcall bid -

- A). You've stuck your oar into the bidding. You are competing. You are not letting your opponents get away with an easy part-score of, say, one or two Hearts.
- B). Your competitive action may result in your opponents going one level too high, particularly if their suit happens to be Clubs, Diamonds or Hearts, and your suit happens to be Spades.
- C). Who knows, your partner may have some useful cards in your suit, and you may end up 'stealing' the contract.
- D). At the very least you have indicated an effective (possibly opening) lead to your partner.

West End Bridge Club meets every Tuesday at 1.30pm. There are vacancies right now for new members. Why not come along and give this friendly club a go? If you're on your own, we'll find you a partner. Please ring Kay Moulton for more details on 01372 464775.

*Clive Craigmile*

## OPEN GARDEN



Sometime in May 2017, (date not yet confirmed), I am planning to open my garden to help raise much needed funds for The Princess Alice Hospice and at the same time get a lot of pleasure from meeting other local garden lovers as well.

The plan is to get about 6 or 7 other neighbours to open their gardens on the same day. The guests will pay a lump sum, to be decided, which will entitle them to visit each of us in turn, via a simple map, ending up in my garden.

I have one or two ideas which, of course, includes a 'high tea' with cakes, scones and cream and probably a slightly different raffle or tombola and of course, no rain!

There will not be a lot of work for participants to do apart from keeping their gardens looking beautiful, which is what they would normally do any way, if they are real garden lovers.

If there is anyone who would like to join me do please call and we can start thinking about how to plan it and make the much needed cash for The Princess Alice Hospice.

My phone number is 01372466  
233

*Lady Anne Hunt*



## BUTTONS AND BOW CLUB

**(For the Over 60s)**

**My, what a busy summer we had at Buttons and Bow. In July we visited the Lavender Fields on the hottest day! A tour of Grayshott Potteries in August was very interesting and followed by a very enjoyable lunch before returning home. An invitation to the 'Sunrise' Home for the retired included a tour and afternoon tea. You can even take your pets with you on your retirement to the home. Afternoon tea and cakes at Garsons was our next outing over the Bank Holiday weekend.**



**In September members will be visiting Morden Hall Park gardens and plan a day trip to Brighton. A visit to Hastings is also planned for October.**

**Left: Morden Hall Park**

**This year's Charity Afternoon will be held on Monday 31st October from 2-4.30pm in the West End Village Club. All welcome. This year our chosen charity is 'STARLIGHT' to raise funds for terminally ill local children and to help their dreams and wishes come true. We shall be serving tea, cakes, as well as having a Sales Table, a Novelty Stall and a Grand Draw to help raise funds for them. Every penny helps! Do come along and meet us. We now have a membership of 42 and this month three members will celebrate 90 years! If you need to know more please call me, Betty Bowpitt, on 01372 465937.**



## WEST END SHOW WOWS VISITORS WITH WONDERFUL WEATHER

Finally, after enduring a few damp and drizzly years, we were rewarded with some beautiful summer weather for this year's Show. And we hope you'll agree it was worth the wait, as a fantastic day unfolded.

The green was packed all afternoon with people enjoying themselves, and from judges to class entrants to visitors the feedback was excellent, with several people declaring this one 'the best show ever!'

In the marquee, the competition hotted up in line with the weather, with impressively high numbers of competition entries.

Lin Martin from the village won 5 cups this year in the flower categories including the overall trophy in the flower classes.

Bob Waller, Irene Hobbs and Kate Carter, all from the West End allotments, displayed some wonderful exhibits as they garnered many of the top places in the fruit and vegetable classes, with Bob Waller gaining 5 trophies. Paul Gibson from the village and Graham Golledge also provided stiff competition.

The President's Perpetual Challenge Cup for the highest total of points in all classes went to a relatively new exhibitor, Graham Golledge, who also won the RHS Banksian Medal.

Steve Wall wowed the crowds with his hugely imaginative, creative floral displays on the theme of the Rio Olympics.

And we had a new winner for the Cookery Cup this year, Chris Hall, with Kate Carter and Lynn Healy leading the way in the Handicraft classes.

The judges praised the high standard of fruit and vegetable and domestic cookery and handicrafts exhibits. The Dog Show and Children's races were also hotly contested.

Across in the revamped Arts & Crafts section, we had a hugely increased number of artists displaying their work, as well as other new features such as professional artists giving live demonstrations over the course of the day.

Outside the marquee there were, of course, all the traditional funfair favourites, including Smash a Plate, Dunk a Damsel, a host of rides and entertainment in the form of the Epsom & Ewell Silver Band, Matto the Clown and Punch & Judy. We even had a special appearance from Miss Surrey 2016, Sophie King, who said, 'Great exhibits here! Well done to everyone involved.'

As the afternoon drew to a close, the Tug O'War got underway with the team from the village triumphant over their opponents from Garsons, so well done to any strongmen who took part. Then followed the auction, prize-giving and the picking of 29 lucky raffle winners to round off the day.

The showstopper marquee stayed up for Sunday night's 'Party By the Pond' and Monday night's opera night so, even if you couldn't make it on the Saturday itself, we hope you had another chance to enjoy the marquee that you so generously helped to provide through your subscriptions.

As ever, the Show committee are hugely appreciative of the contribution made by the villagers who subscribed; without you it simply wouldn't be possible to put on the Show. This year, we were also bowled over by all the other kinds of support shown by the village: from competition entries, to lending a hand in setting up and taking down the whole event, to helping to man the stalls, and to all the familiar faces on the green on the day, your support was crucial to making the day the success it was.

If you've been inspired by this year's Show to get a little more involved, remember we're always on the lookout for new committee members. If you're interested, please contact Fiona Cameron on [fionac.mack@gmail.com](mailto:fionac.mack@gmail.com) or come along to the show's AGM on Monday 7th November at 8pm in the Village Hall.

And finally, don't forget to follow us on social media and via the website to see and share photos from this year's Show and get the latest updates on what's in store for next time:

[facebook.com/westendflowershow](https://www.facebook.com/westendflowershow)

[Twitter.com/westendflower](https://twitter.com/westendflower)

[www.westendflowershow.co.uk](http://www.westendflowershow.co.uk) Until next time,  
The Show Committee

Genny Assersohn

## West End Village Hall



Ideal for children's parties, meetings, functions and family occasions.

Adult parties strictly for Village Residents only by special arrangement.

### TO BOOK

Visit: [wevh.org](http://wevh.org)

Mail: [hirehall@wevh.org](mailto:hirehall@wevh.org)



The Auction, exhibits and young winners of the day!



Photos:  
Angela Stockbridge



## ST GEORGE'S CHURCH

### WEST END



It doesn't seem that long ago that we were writing our last article and looking forward to the West End Summer Show. We were blessed with lovely weather (all weekend!) and as usual we opened St George's Church for visitors to come and look inside – many people often walk or drive past but have never been inside to look around. We of course also have our legendary home-made cakes, fresh home-baked bread stall and a raffle and this proved to be a huge success raising money for the upkeep of our little church. Meanwhile the ladies from Christ Church did a wonderful job running the "Teas & Cakes" in the Village Hall – a lovely way to enjoy a cuppa with a cream tea or a slice of cake during the afternoon. Both these events raise money for our churches and we are always so grateful for your support.

You may notice that the outside of St George's Church will be having a "face-lift" towards the end of September. The outside will be repainted and hopefully the bell tower will be repaired and the bell mended – allowing us to again ring a short announcement of our 9am service on Sunday mornings. It is exactly this kind of maintenance that uses money from our fund raising.

Our annual Pet Service took place on Sunday 18th September at 4pm and we will report on that next time!

Our Music On The Green concerts resume on Wednesday 21<sup>st</sup> September (12.30pm - 2pm) at Christ Church. They are free of charge and include a light lunch, although we always welcome a donation! Do look at the notices on the fence around St George's for details of all our services and also the announcements of the monthly concerts and any other special events that we are running.

For more information about all our Churches and our services please do visit our website: <http://www.esherparish.org.uk> where you can find everything you might want to know about the Parish of Esher including Music on The Green.

In the meantime, if any of you, or someone you know, would appreciate a home visit or would like to receive home communion, please contact the Parish Office on 01372 462282 or Peter Lindow on 01372 462041.

Finally – thank you as always for your continued support.

*Andrea Lindow and Bridget Williams*

## IN MEMORIAM

### MARY SHORT



In the last edition of the Village News, Alice Austin remembered long time West End resident Mary Short who died in April at the age of 79.

This has prompted us to send our own reflections on a much missed neighbour.

Not only did Mary know everything about West End she was public spirited, generous with her time and loved where she lived. She volunteered at the Hersham Day Centre two days a week, cycling there in all weathers, and was an active member of All Saints Roman Catholic Church. Mary was a quietly determined, no nonsense girl from a farm in County Cavan, Ireland. Born in 1936, she came to England in 1954, living first in Cobham. She moved into West End in 1958 and lived in a flat now known as Claremont Cottage. She then moved into 44 Winterdown Rd in 1969.

Mary worked first at the Toby Jug in Tolworth, then at the Vermont Exchange followed by The Bear in Cobham; it was there that she met her future husband, George. Later Mary and George along with their daughter, Irene, and niece, Marie, worked in the original West End Sports and Social Club. A keen gardener, Mary was often to be seen tending to her garden; her dahlias were particularly spectacular, making her garden one of the most colourful in West End. Content with her own company Mary was equally happy to chat, especially if she could do so while working in her garden.

Her final days were spent in a room looking out at another garden in Princess Alice Hospice. The view, combined with her faith and Irene's tireless support, enabled her to be grateful right up until her death that she had been able to live in such a beautiful place.

Her presence in the village is sorely missed by many whose lives she touched. A plaque has been erected in her memory overlooking the pond by the house where she lived.



*Grant Ferrett and  
Alastair Joel*

**Pick Your Own at Garsons**  
GARDEN CENTRE | FARM SHOP | RESTAURANT | PICK YOUR OWN

**Pumpkins  
now picking!**

Monday - Saturday  
9am - 5pm  
& Sunday 11am - 5pm

For more info and crop updates visit  
[www.garsons.co.uk](http://www.garsons.co.uk)

**Garsons** Growing since 1871  
Winterdown Road, West End, Esher, Surrey KT10 8LS | 01372 460181

Many **PRUDENTIAL RIDE LONDON**  
**Surrey— July 2016**

The first picture shows Geraint Thomas, Team Sky GB who broke away from the peloton half way at Ranmore Common being almost 5 minutes ahead at one stage only to be caught on the Embankment just 5km from the finish in The Mall! He had another disappointing ride when he crashed whilst descending the notoriously dangerous hill in the Olympics Road Race just a month later.

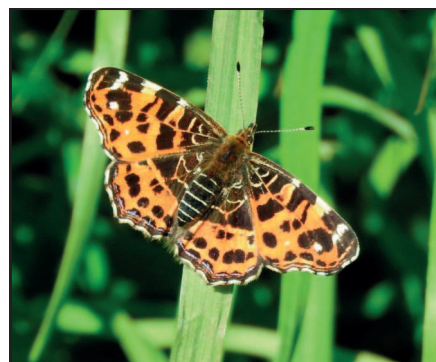


*Article & Photos: Ann Tennant*

**PHOTOGRAPHIC CORNER**

Don Tyzack sent in these two lovely pictures taken in West End.

If you look carefully you can just see the Jackdaws in the top right of the seagull picture.



Above is a French butterfly which Don photographed just over the Channel, but it is now extinct in UK. It is called a 'Map'.

**FOR SALE**

Stylish new Hobbs Black Suede court shoes, unworn. Size 5—still boxed. £50.

Good Quaita pair of Montgomery ready-made lined Curtains

228cm by 182cm

Cream background with muted pattern, as new, professionally cleaned —£50

Anyone interested?

Please call 01372 460703





## ARE YOU INTERESTED IN FRENCH LANGUAGE, LIFE AND CULTURE?

If so, do come to West End Village Hall to listen to carefully selected speakers talking in French on a variety of topics.

Talks take place monthly from October to June on the third Wednesday of the month except December when it is the second Wednesday. They start at 8.15pm, last for an hour and are usually attended by 60/70 members of the Cercle and visitors whose ability in the French language varies from the fairly basic to the completely fluent.

\*Relaxed and friendly atmosphere \*Free coffee and biscuits from 7.15pm \*Only £5 per talk or £30 for the whole season. Opportunities to improve your French at language workshops. For further information or our complete programme, please contact:

\*Brigitte Tiller on 01932 860842 or [brigitte@ptiller.com](mailto:brigitte@ptiller.com) or

\*Cavan Taylor on 01932 864258 or [cavan.taylor@btopenworld.com](mailto:cavan.taylor@btopenworld.com) or

\*Visit our website:  
[www.dontyzack.care4free.net/cercle.html](http://www.dontyzack.care4free.net/cercle.html)



*Cavan Taylor*



## W.E.R.A. (West End Residents' Association)

At last we managed to have a summer fete without having to cover the books up to protect them from the rain! Thank you to all of you who donated books, jewellery and scarves. We raised £500 which is certainly a big improvement on the last couple of years. The jewellery aspect seems to be a big hit and is certainly something we are considering doing again next year. Can I also take this opportunity to say a big thank you to all those who help both in preparation for the stall and manning it on the day, it takes a lot of time and effort, without which we would be lost.

I am delighted to say that I have finally formed a data base of email addresses for residents within the village who want to receive information about what WERA are up to. The system was recently used to inform residents of discussions we were having with the Council and Garson's Farm in relation to the litter left on the Green and I hope was of benefit to all!

For those of you who missed out on that email, the Council has agreed to collect litter from the Green on Sunday mornings and Sunday evenings during the peak summer periods. Garsons Farm had indicated that in the absence of any such undertaking from the Council they would be willing to assist where they could.

If you are not on my email list and would like to be then please do not hesitate to contact me and I will add your address ([Susannahbramley@googlemail.com](mailto:Susannahbramley@googlemail.com)).

*Susannah Bramley  
Chairman*

## Brodie & Hickin Landscapes

Est. 1980

- Patios • Driveways • Brickwork • Fencing • Ponds • Turfing
- Decking • Pergolas • Tree Surgery • Planting Schemes

Urban Gardens to Large Estates - Fully Qualified Team - Fully Insured

We pride ourselves on being Reliable, Friendly & Efficient

Please call for a FREE estimate



**Phone: 020 8398 5000**

[www.bhlandscapes.co.uk](http://www.bhlandscapes.co.uk) • Email: [info@bhlandscapes.co.uk](mailto:info@bhlandscapes.co.uk)  
64 Couchmore Avenue, Esher, Surrey KT10 9AU



Another pretty Flower Show Exhibit

## VILLAGE NEWS WEST END

**Please make a diary note of the Christmas 2016 Edition Copy Date: Friday 25th November 2016**

If you wish to advertise, send in an article or photographs for the Autumn 2016 Edition please contact Angela Stockbridge Email: [angelastockbridge1115@gmail.com](mailto:angelastockbridge1115@gmail.com) Tel: 07817 498531 or 01372 460703

The Village News is supported by local organisations including: the West End Village Club, The West End Summer Show Committee, Garsons, Winterdown WI, Independent Advertisers and personal donations.

The newsletter is printed by Impress Print Services, Hersham and Garsons.

**Sadly, we have lost one of our sponsors and if you know of anyone who may wish to contribute quarterly to the cost of publication of this newsletter please let me know.  
We thank you all for your continued support.**



## Claremont Fan Court School

An independent co-educational school for pupils aged 2½ to 18 years

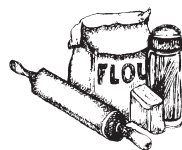
### Come and visit us



**Prospective families are welcome to come and visit the School.**

For further information or to arrange an appointment please telephone **01372 473624** or email **info@claremont.surrey.sch.uk**

[www.claremont-school.co.uk](http://www.claremont-school.co.uk)



BESPOKE CATERERS OF FORMAL OR INFORMAL EVENTS  
**ELIZABETH TRELIVING**

\* WEDDINGS

\* CELEBRATION PARTIES

\* CORPORATE EVENTS

\* DISHES AND PLATTERS TO ORDER FOR DELIVERY OR COLLECTION \*



\* MEMORIALS

\* CHRISTENINGS

\* SMALL PRIVATE FUNCTIONS

The Showroom • 197 Lower Rd • Great Bookham • Surrey KT23 4DG

T: 01372 453206 • M: 07712 760175 • E: ejtreliving@aol.com

Or visit our site at [www.homecookingdirect.co.uk](http://www.homecookingdirect.co.uk)



## WEST END FILMS

If you are interested in foreign language, black and white and classic films, why not join our friendly group at the Village Hall every third Sunday from September. Films start at 7.30pm. See our website for the autumn season's programme.

[www.westendfilms.co.uk](http://www.westendfilms.co.uk)

Our website also includes a back catalogue of the films we have screened over the last eight years.

Robin Crane

[westendfilms@btinternet.com](mailto:westendfilms@btinternet.com)



## ETERNA

Pioneers in Watchmaking  
Since 1856

Newbould & Sons  
1 Church Street  
Esher Surrey  
KT10 8QS

Tel : 01372 465574

Web :

[www.jrnewbouldandsons.co.uk](http://www.jrnewbouldandsons.co.uk)



## Wheatley

SONS LIMITED  
BUILDING CONTRACTORS

255 ARDEN ROAD, EAST MOLESEY, SURREY KT8 9BQ  
Telephone: 020 8779 5262 Facsimile: 020 8941 7388

**Wheatley & Sons Limited**  
Established 1850

ESTABLISHED 1850. Telephone - 173 P.O. KINGSTON.  
**BRIDGE ROAD, EAST MOLESEY,  
and HIGH STREET, ESHER.**

## WHEATLEY & SONS,

(Successors to J. Wheatley & Sons, Ltd.)

### Builders, Contractors, & House Decorators.

GAS, HOT WATER and SANITARY ENGINEERS,  
PLUMBERS, GLAZIERS, and BELL HANGERS.

Jobbing Work of every description with Bricklayers, Plasterers,  
Carpenters, Cabinet Makers, Painters, Paperhangers, Glaziers,  
Gilders, Plumbers, Gas and Bellfitters, Tinmen, Smiths, &c.

Carpets taken up, Beaten and Re-laid. Stoves and  
Ranges Supplied and Set. Boilers Cleaned. Kitchen  
Utensils Re-tinned.

HOUSE DRAINAGE & VENTILATION A SPECIALITY.  
DRAIN TESTS AND REPORTS.

PLANS prepared and advice given upon all matters  
connected with New Buildings, Additions, Alterations  
and Repairs.

FUNERALS FURNISHED in best style and conducted  
to any part of the country. Cremations arranged.  
Monuments, Brasses, Memorial Windows &c.

HOUSE & ESTATE AGENTS. FIRE & LIFE ASSURANCE.  
RENTS COLLECTED. VALUATIONS FOR ALL PURPOSES.

## NO JOB TOO SMALL

Telephone 020 8979 5762

Fax: 020 8941 7388

Email:

[wheatley\\_sons@btconnect.com](mailto:wheatley_sons@btconnect.com)