



## THE 63rd WEST END VILLAGE SHOW



A huge 'thank you' to all the Flower Show Committee, stall holders and organisers for all their hard work to ensure, once again, we had a wonderful annual Village Show. The event was very well attended and the weather was glorious. The Village Hall and St .George's Church were open enticing everyone in with an astonishing array of home-made cakes and refreshments! The Prince of Wales and Garsons also welcomed many visitors on the day. *Below left: 1st Prize for Pam Newman's Monet's Garden in the Floral Art section.*



*Above: The Venerable David Gerrard with his wonderful selection of home-made bread in St. George's Church. Thanks to Peter Bedford and his team for all their support at the show.*

*Photo: Peter Bedford*



## WEST END RESIDENTS' ASSOCIATION



It is with regret that we must announce that Susannah Bramley has resigned as Chairman of the West End Residents Association. Susannah has carried out the role extremely efficiently and will be greatly missed for her tact and diplomacy in dealing with the many issues arising during the last ten years. We are all most grateful for her efforts and time and would like to thank her most sincerely for her work in the village.

The committee would now like to begin the process of finding a new chairman and to this end, would ask any residents if they would like to be considered for this role. It involves doing the agenda for the Annual General Meeting of the residents and for chairing this annual meeting. It also involves chairing the committee meetings which generally occur about four times a year. He/she also will keep abreast of any issues the village faces including finances, planning, traffic including liaison with Garsons, and generally anything that can affect the wellbeing of the village. If you are interested in carrying out this role, please contact June Bramley by email ([Jsandom@aoll.com](mailto:Jsandom@aoll.com)) or telephone 01372 461170.

### Other news:

WERA and its members are keeping on eye on individual planning proposals in the village on a case by case basis and will continue to work with Councillors and residents to ensure that wherever possible development is appropriate to the village environment and conservation area. This includes opposing the appeal for two large town houses at 89 West End Lane for which a decision is expected shortly. WERA (Jane Sharland) is also planning a meeting with the Head of Strategy Services at Elmbridge and his new head of Planning later this month to see if we can work more closely with the Council to ensure that developments which are proposed are appropriate before they reach full planning application stage. We will keep all residents informed via the newsletter, village notice board and, where necessary, door to door communication.

The yellow lines proposed for the North end of West End Lane is being opposed by the committee (Doug Fryer) because of the prospect of traffic being relocated into the village. An alternative proposal of increased parking in the car park opposite Princess Alice is being highly recommended and Doug has already circulated a letter to affected residents to this effect to encourage them to contact Surrey to support the car-park option..

The unwelcome arrival of travellers on the recreation park opposite PAH was swiftly dealt with by Elmbridge Council and we are extremely grateful for this help in moving them on and for clearing up the horrible mess that they left behind.

The Bookstall at the Village Show raised £480 from the sale of books, costume jewellery, pictures and scarves.

So, in conclusion, we hope you all had a lovely summer break and enjoyed the West End Show. We look forward to receiving some applications for the role of Chairman.

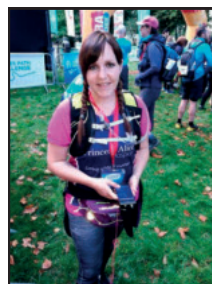
*June Bramley*

## NODDY THE TORTOISE GOES ON VACATION!

The Bodenham's of Winterdown Road would like to say a huge thank you to all the kind residents of West End who helped look for Noddy, their tortoise. They are so grateful and want to say a special thank you to the Trotman family who found Noddy as he strolled casually out of a bush after a two and a half week holiday in chilly weather and relentless rain. He is now safe and sound at home and has been enjoying basking under his heat lamp.

*Edward and Annette Bodenham*

## THAMES PATH CHALLENGE



I have lived in West End for 10 years. On the weekend of the 9th and 10th of September 2017 I took part in the Thames Path Challenge, jogging 100km continuously from Bishops Park, Fulham to Henley-on-Thames, to raise money for the Princess Alice Hospice.

The Hospice went above and beyond when my Uncle, Chris Spurdle, was in need. He had battled a long time with Cancer. In his later months he went into the hospice for care. The Hospice not only gave him dignity, respect and compassion, but also us, his family. After he had passed away at the Hospice in November 2016 they continued to offer help and compassion to us. I took up jogging again to help myself, then I saw that I could use this energy and grief to good effect and raise money for this outstanding local charity via the Thames Path Challenge. Lets let everyone know about this Charity and the amazing work they all do in our very own village. All details including the course itself which will run through many local towns along the Thames, my story, details and updates can be seen on my just giving page.

*(10/9/17) I made it to 88km at 4am this morning I had to stop as I had a trapped nerve in my back and my groin pain got worse and worse over the last 30km. Its was gruelling physically and mentally, more so during the night stages with only a head torch for light, freezing fog along the tow path and no one else for miles. It was an amazing experience and full of wonderful people and a true show of people at their best helping others and willing them on. My family and friends were amazing throughout.*

My just giving page is, [www.justgiving.com/kerry-ford5](http://www.justgiving.com/kerry-ford5). Also you can donate by text. PAHC70 £3 to 70070

Thank you to everyone!

*Kerry Ford*

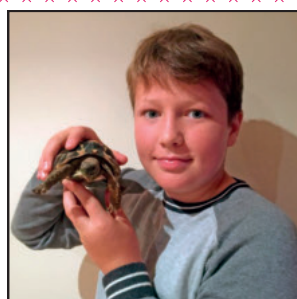
## WRITING



I'm a local writer, novelist, script editor, screenwriting lecturer with a lot of creative writing experience in different genres and media.

I keep meeting people in the village with amazing stories and great ideas who are unsure how to develop their work. If you are interested in joining a small group to develop your ideas in a supportive environment and acquiring some of the necessary craft skills, drop me a line. If there's enough interest, I'll organise a group to meet monthly.

Merle Graham [merle.nygate@btinternet.com](mailto:merle.nygate@btinternet.com)



Left:  
The happy reunion.  
Noddy safely home with his owner, George Bodenham.

## VILLAGE NEWS ACKNOWLEDGEMENT

The Village News team would like to thank the Peter and Naomi Bedford for their generous donation to the Village News.

The team very much appreciates donations towards the cost of the printing of the newsletter. It is through the generosity of local individuals and societies that we are able to continue to bring news to West End's rather special community.

## BUTTONS AND BOW 'THE BUSY BS'

**Kent Surrey Sussex  
Air Ambulance**



It's the time of year again when Buttons and Bow support a charity by holding a coffee morning to raise funds. The chosen charity this year is "Air Ambulance" who cover Surrey, Kent and Sussex and as you know were very much involved in the London fire with the devastation on Tower Bridge. The service is also close to Prince William's heart, having serving as a pilot.

The coffee morning is to be held in the Village Hall on Saturday 30th September between 9am and 1pm.

A member from Air Ambulance will be there to greet you as well as stalls providing jewellery, cosmetics, cakes, toys, bric-a-brac, name the dolly, weight of the cake as well as refreshments. The Grand Raffle will also be held with prizes donated by many local businesses. So why not pop along and support the charity, you never know, you might need their help one day!

Buttons and Bow Club for the over 60s meet every Monday afternoon between 2pm and 4.30pm in West End Village Club. Come along and enjoy the friendship and company of others enjoying entertainment, speakers, quizzes, bingo and, of course, tea and biscuits.

Join us on outings and lunches as well as holidays.

Need to know more, then contact  
Betty Bowpitt on 01372 465937.

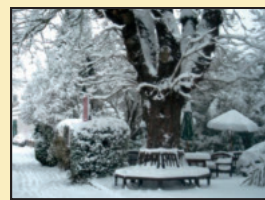
## PHOTOGRAPHIC CORNER



These photographs of a Comma butterfly were taken in my garden in East Horsley and shows both the upper and lower parts of the wings. It arrived on last Saturday while we sat in the garden in the sun for about an hour. During that time we saw also a Red admiral, a Holly Blue, a Gatekeeper, several large and small whites and some Hornets.

*Don Tyzack*

## WEST END CHRISTMAS CARD COMPETITION



We have already received a number of local artists' beautiful paintings of winter scenes in West End and look forward to receiving more for our West End Christmas card.

If you are thinking of entering  
our competition please

Email pictures to the address below or  
telephone 07817 498531 by no later than  
Wednesday 4th October.

The pictures will be displayed and entries can be viewed on  
Thursday 5th October or

Sunday 15th October between 2.00-4.00pm at  
Rose Cottage Stable Studios, 46 West End Lane  
Judging: Sunday 15th at 4.30pm.

1st Prize: Bottle of Champagne

If you are interested in sponsoring the Christmas card  
please contact

angelastockbridge1115@gmail.com

## SURREY POLICE

**IMPORTANT PLEASE READ.....**



Call 999 for Emergencies only.

Call 0800 555111 for Crimestoppers.

**Call 101 - Surrey Police for General  
Enquiries and non-urgent matters.**

This number will also transfer you to Esher Police  
Station, which is open from

**09.00-17.00 hours Monday to Friday.**

Sgt 2190 Greg Turner covers Esher

PCSO 13867 Nigel Oates covers West End

PC40489 Chris Smith is the local PC Tel: 101 or ext. 38298

14614 Mike Bessent is the contact for Neighbourhood  
Watch, Surrey Police, Elmbridge Borough :

Tel: 101 Extension: 38857

Officers can be contacted by dialling 101 or email:

Elmbridge@surrey.co.uk

**IMPORTANT:**

- ◆ Please be aware that there have been two attacks on young girls recently in the area. An ongoing search is underway for the suspect. Please ensure your child/children's safety at all times.
- ◆ Travellers have recently been removed from the Recreation ground in West End Lane.
- ◆ Please ensure your homes, cars and garages are securely locked at all times.

## UNSIGHTLY WASTE BINS!

Local residents are concerned that these unsightly bins are spoiling the village scenery. Requests have been received to ask if waste bins can be put out on Tuesday evening prior to collection early on Wednesdays. Since the change in the collection services, and a request by the Council to put bins out before 7am Wednesday morning, bins are often put outside houses a day too early. Let's try and keep our village looking like the 'Jewel in the Crown' of Elmbridge it was deemed to be some years ago. Bins are unsightly when placed in rows in front of houses and make very unpleasant viewing. It doesn't help when the bin collectors leave them strewn across the pavements and roads instead of returning them to the perimeter of properties!

*Anonymous*



## ☆☆☆☆☆☆☆☆☆☆☆☆☆☆☆☆☆☆☆☆ CHARITY GALA NIGHT ☆☆☆☆☆☆☆☆☆☆☆☆☆☆☆☆☆☆☆☆

The local Save the Children branch, chaired by Roger Marsden, would like to thank all those villagers who supported the annual Charity Gala in the marquee on August Bank Holiday Monday. Helped also by the generosity shown in the bucket collection a total of over £2700 was raised.

*Roger Marsden*



### ST GEORGE'S CHURCH WEST END

On 15 July we held a belated celebration of St George's Day (23 April) in the garden of one of our members of the congregation. It was a lovely summer evening and around 50 of us (aged between 8 months and 90+) enjoyed a lovely bring and share buffet. We had

paid for tickets and managed to raise another healthy sum towards the upkeep of our lovely church. Our thanks to Mair for hosting the event.

> Our major fundraiser was our bread and cake stall in the church at the West End Flower Show. Unfortunately Andrea and Bridget were unable to run it this year and the helm was taken by Peter Bedford and his amazing team (see his note and pictures below). Our thanks to them all for keeping our "show on the road".

> By the time you read this we will have welcomed Bishop Andrew (Bishop of Guildford) to our service at West End on the 17 September and he will then also be leading the worship at Christ Church for the 10.30 service. Our annual Pet Service is the same afternoon which hopefully will have been as well attended as ever. Harvest Service is on Sunday 1st October at 9am so do join us if you can.

> We are lucky to have such a thriving congregation at St George's with age ranges from babies to 90+, so if you are new to the village - do join us one Sunday at 9am, you will be most welcome.

> For more information about all our services (at both Christ Church and West End) please visit our website

[www.esherparish.org.uk](http://www.esherparish.org.uk)

where you will find everything you need to know including details about our monthly free Music on The Green concerts. We also put topical notices and a monthly calendar on our fence, so do stop and have a look as you pass by. Thank you as always for your continued support.



*Andrea Lindow and Bridget Williams*

*Photos: Peter Bedford*

## GONE IS THE FUN OF THE SUMMER FAIR AND LOOKING FORWARD TO A CHRISTMAS FAIR

It's all over. The West End Summer Fair is all packed away, ready for next year, but what a fabulous day it was. The atmosphere was great and no one seemed to want to go home! but now, time for a rest.....except believe or not - it's almost Christmas - it's just around the corner. About 11 weeks from now, Christmas will be with us!!

First though one must say a sincere thank you to all those great volunteers who helped in so many different ways to create the Summer Fair and of course the artists themselves who contributed their paintings for the exhibition, plus all the others who willingly gave us of their time and energy. Without any of them there would not have been a fair or exhibition for our visitors to enjoy.

May I also add a line of thanks to the committee who for years have kept this great annual event going. They too deserve many words of thanks for willingly giving up their time almost every month throughout the year to ensure that the fair is well run and well organised. Very many thanks to them all. ....and if you would like to join in the fun of getting this great event together do please get in touch with Fiona Cameron on 01372 467119 or Donald Mungall on 01372 463199 who would love to hear from you.



As already mentioned Christmas is coming - and this year, unfortunately, The Princess Alice Hospice will not be holding a Christmas Fair as they have internal building works going on which will prevent them holding it, so I thought how

about holding one in our lovely village hall on their behalf.

It has been many years since there has been one in there, so it has been agreed that we will hold one on Saturday, November 18th from 10.00 to 4.00pm.

The aim will be to have a mixture of interesting items that will amuse, amaze or please everyone and, of course, be suitable as Christmas presents for our loved ones.

We would also like to include good interesting crafts as well. So, if you know a good crafter who does interesting artefacts that would make amusing, funny or clever Christmas presents, do please get in touch. We have about 12 tables to let at £20.00 each, and a few have gone already.

One of the things we would like are a pair of cards makers who are prepared to share a table. The reason being that although we very much want variety, we want no more than 3 cards makers to partake. The Princess Alice will be having their own cards as well as cards made by a group that will be creating reconditioned cards especially for the Hospice.

If you have any interesting ideas or are willing to assist in any way, please get in touch. Your help, as always, will be very welcome.

### FREE CRAFT SESSIONS

Would you like to know how to make reconditioned cards that we will be selling, with lots of other crafters at a **Christmas Fair on Saturday 18th November 10 - 4.00pm in the Village Hall** to help raise more funds for The Princess Alice Hospice?

We are planning to show volunteers how to make the cards. Although there will be a meeting every Wednesday morning, from 10.00 to 12.00 you don't have to come every Wednesday. We are limited to three people per session so do book early. If you join us you will also be shown how to make not only the cards, but beautiful bows and wonderful gift-wrapped boxes - with a difference. You can take some materials home and return with them when you have finished, or you can stay and enjoy the natter while we are all working to make lots more goodies for us to sell at the fair.

There is no fee for joining this small group but we would like your dedication and agreement to continue to help until we feel we have enough cards to sell at the fair.

If interested please call me, Anne Hunt - 01372 466233

## WEST END VILLAGE SHOW WEATHER DELIVERS ONCE AGAIN FOR OUR VILLAGE SHOW

The 63rd annual West End Village Show took place on Bank Holiday Saturday 26th August.

The fantastic weather this year reflected the mood of the Show's many visitors, as another wonderful day unfolded. The green was buzzing with fun and excitement all afternoon and feedback has been overwhelmingly positive. Inside the marquee, the competition hotted up in line with the weather, with around 700 entries across the various classes, including more for the vegetable and flower classes than we've seen in recent years, despite the early start to the growing season and the cold, wet weather earlier in the summer.

Irene Hobbs and Lin Martin continue to dominate the flowering classes, despite being challenged by some new names this year!

The cookery and preserve classes attained their second highest total of entries, including 21 delicious coffee and walnut cakes (yummy!) and some wonderful creations in the new Showstopper class.

There was keen interest in the new Infused spirit or fruit liqueur class, with Stephen Kelly winning the prized Rolfe salver.



*Helen Christie made the winning Coffee and Walnut Cake*

After a very tight competition between Chris Hall and Kate Carter, Kate was the winner of the Cookery Cup. The Morris family, Merrick family and Christie family all had multiple prize winners. Well done everyone!

Numbers were also up in the Handicraft section, demonstrating a very high standard of craftsmanship. Marion Ford's three firsts ensured that she captured the Silver Challenge Cup.

In photography, the competition between Jackie Bisson and Angela Stockbridge could not have been tighter as Jackie Bisson went on to win the Michael Newbould Cup and Angela Stockbridge won the Esher News and Mail Cup for the Best in Show photograph.

The children's categories, the Dog Show and the Children's Sports were also hotly contested.

Outside the marquee there were of course all the traditional funfair favourites, including Smash a Plate, Dunk a Damsel, a host of rides and entertainment in the form of the Epsom & Ewell Silver Band, Matto the Clown and Punch & Judy, as well as the return of the beautiful classic cars display and new attractions such as the Shetland Pony Club's Pat a Pony experience.



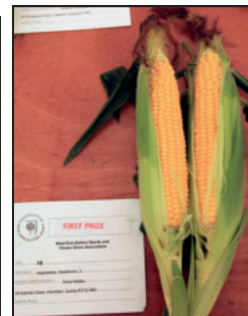
*Lynn Healey won the Embroidery 1st Prize for her delightful cushion.*



*Paul Gibson's winning Potatoes.*

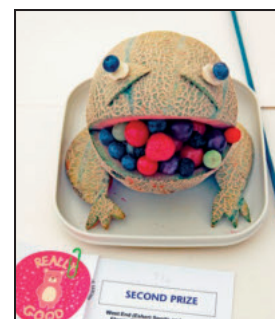
As the afternoon drew to a close, the Tug O'War got underway with the team from the village eventually triumphant over their opponents from Garsons in a 'best of 3', so well done to any strongmen who took part. Then followed the auction, prize-giving and the picking of the lucky raffle winners to round off the day.

The showstopper marquee stayed up for Sunday night's 'Party on the Pond' and Monday night's opera night, so even if you couldn't make it on the Saturday itself, we hope you had another chance to enjoy the marquee that you so generously helped to provide through your subscriptions.



*Above left: Marion Ford won 1st Prize in the Needlework section and Irene Hobbs' perfect Sweetcorn won over the judges.*

*Below: 11 yr old Erin O'Brien's cute little sheep Decorated Fairy Cakes came 3rd, Judges comments were: "Superb effort" and Lucy Reynolds, aged 10, won 2nd Prize in the Animal Model class made with fruit or vegetables.*



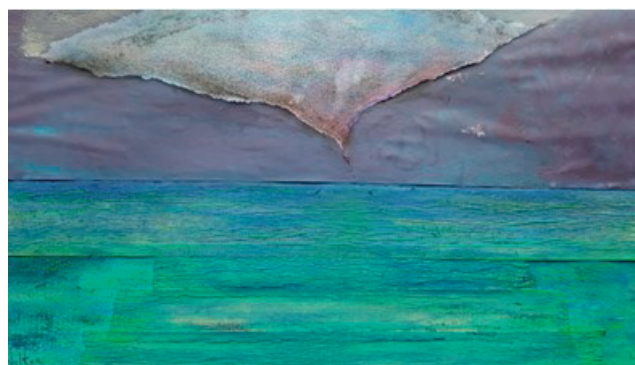
As ever, the Show committee are hugely appreciative of the contribution made by the villagers who subscribed; without you it simply wouldn't be possible to put on the Show.

If you've been inspired by this year's Show to get a little more involved, remember we're always on the lookout for new committee members to help make the Show happen and continue a wonderful local tradition. If you're interested, please contact Fiona Cameron on [fionac.mack@gmail.com](mailto:fionac.mack@gmail.com) or come along to the show's AGM on Monday 6th November at 8pm in the Village Hall.

*Report: Genny Assersohn*

*Photos: Angela Stockbridge*

### Beginners Watercolour class



Come to the Rose Cottage Stable Studios, 46 West End Lane  
Every Tuesday night  
7.15pm to 9.15pm  
**Starts Tuesday September 12<sup>th</sup> 2017**

Contact Lucinda (FE Tutor) on 07971 603876  
about the 12 week course discount or pay £12 per session



## WEST END BRIDGE CLUB



### Opening Lead Observations

I have been asked to jot down a few thoughts on Opening Leads. Undeterred by the fact that there are whole books on this subject, I'll have a go. The Opening Lead is the one card of the 52 that has to be played without a sight of Dummy. It can strike gold, or it can be disastrous.

With this in mind, it's worthwhile for the Opening Leader to review whether he or she should adopt an aggressive or a safe strategy. Generally speaking, if your opponents have bid quickly and smoothly to their contract, it looks like you may have to win your tricks fast; if the bidding has been rather laborious, you may need not need to give anything away with your opening lead, and play (hopefully) safe.

- A) If you're lucky enough to hold the A K against a suit contract, lead the Ace—and you get a free look at Dummy's cards. You can continue with the King, or switch the suit as need be.
- B) If you have a nice sequence, such as Q,J,10 or J,10,9, lead the top card and you start the process of winking out the higher cards. This has the advantage of being both aggressive and safe.
- C) Lead a singleton against a trump contract so that you are left with a void and can trump the second round.
- D) When not to lead a singleton. When you have a useful trump suit holding yourself. Reason—it's better to establish your partnership's suit, and exhaust Declarer for trumps.
- E) If your Partner has bid a suit, PLEASE LEAD IT! Not just to promote partnership confidence, but because suits are generally best led up to rather than away from. Which card? It used to be always the highest, but now it's considered better to keep, say, a King in reserve to deal with a high card in Declarer's hand. N.B. E) overrides all other opening leads.
- F) Against a No Trump contract, lead the 4th best of your longest suit. The only lead that beats this is the top of a sequence of three cards.
- G) A much-neglected Opening Lead is a Trump. You should do this whenever you suspect Dummy has a short suit, or there is a cross-ruff impending.
- H) The Lightner Slam Double. Invented by Theodor Lightner, this asks Partner to make an UNUSUAL Opening Lead in a suit contract. This is usually based on the Doubler having a void suit.

Please ring Kay Moulton on 01372 464775 if you would like to join our friendly club. Meetings every Tuesday afternoon at 1.30pm. Chicago once a month.

*Clive Craigmile*

**Garsons**  
Growing since 1871

GARDEN CENTRE | FARM SHOP | PICK YOUR OWN | RESTAURANT

Garsons  
Winterdown Rd  
West End, Esher  
Surrey  
KT10 8LS

Garden Centre..... 01372 460181  
Farm Shop..... 01372 464778  
Restaurant..... 01372 460198  
Bevan's Butchers... 01372 460951

www.garsons.co.uk

Facebook, Twitter, Instagram icons

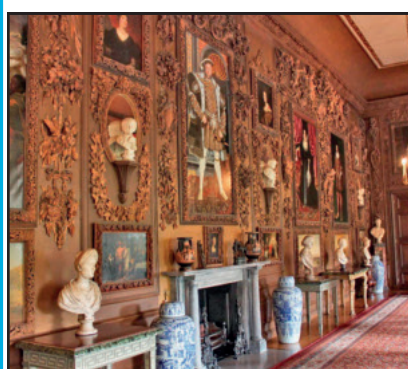
## WINTERDOWN WI

Winterdown WI has had a quiet summer. Our Vice President Marion Ford stepped into the breach and presided over the July meeting, when speaker Kenneth Bare gave a talk about the Surrey Hills. He inspired such a lot of enthusiasm that I am sure the walkers amongst us will be off to do some exploring very soon.

Our August meeting was held in St Georges Church. The Rector, Stefan Collier, kindly allowed us to use the church as there were to be renovations to the Village Hall at the beginning of the month. It was a very apt setting for our speaker Janet Matthews whose talk was about the history of the building of Guildford Cathedral.

An outing to see 'The Girls' at the Phoenix theatre proved to be very enjoyable. It seems that 10 ladies of a certain age travelling together on a London bus caused a bit of a stir and a very jolly lady ticket inspector spent the journey teasing us.

Some members had a day out to visit Petworth House. There was a bit of a hiccup before we set off as the driver was unable to open the door of the coach. However that was soon sorted out and we all settled ourselves for the journey only to find the door would not close. Faced with the prospect of a very draughty journey we all voted to carry on but, after driving for a short distance we went over a bump and miraculously the door shut. We had an enjoyable day exploring the house, listening to a talk about Henry VIII and about his portrait (a copy) hanging in one of the rooms. Then in the afternoon, by special arrangement, we were taken on a tour of some of the bedrooms.



*Left: Henry VIII*

*Below: the magnificent staircase at Petworth House*

Our speaker this month failed to turn up on time and after speculation as to what might have befallen him we decided to carry on without the talk. However just as the WI business had been completed he arrived, very apologetic as his car had broken down and he had walked through most of Esher to get to us. After reviving him with tea and biscuits he went on to give a very interesting and informative talk entitled 'In the footsteps of the Shoguns' (Behind the sleek modern Japan another world of tradition, religious rites and warlords).

Coming up:

October 5<sup>th</sup>: Margaret Arnott 'National Garden Scheme'

November 2<sup>nd</sup>: Annual Meeting – Social meeting

December 7<sup>th</sup>: Christmas Meeting – Social meeting

**Winterdown WI meet on the first Thursday of the month at 8.00pm in West End Village Hall. Visitors are always very welcome. Contact: Secretary, nn Tennant on 01372 466725**



*Report & Photos: Caroline Thyer*



## ARE YOU INTERESTED IN FRENCH LANGUAGE, LIFE AND CULTURE?

If so, do come to West End Village Hall to listen to carefully selected speakers talking in French on a variety of topics.

Talks take place monthly from October to June on the third Wednesday of the month except December when it is the second Wednesday. They start at 8.00pm, last for an hour and are usually attended by 60/70 members of the Cercle and visitors whose ability in the French language varies from the fairly basic to the completely fluent.

\*Relaxed and friendly atmosphere \*Free coffee and biscuits from 7.00pm \*Only £5 per talk or £30 for the whole season.

Opportunities to improve your French at language workshops.

For further information or our complete programme, please contact:

\*Brigitte Tiller on 01932 860842 or [brigitte@ptiller.com](mailto:brigitte@ptiller.com) or

\*Cavan Taylor on 01932 864258 or [cavan.taylor@btopenworld.com](mailto:cavan.taylor@btopenworld.com) or

\*Visit our website:

[www.dontyzack.care4free.net/cercle.html](http://www.dontyzack.care4free.net/cercle.html)

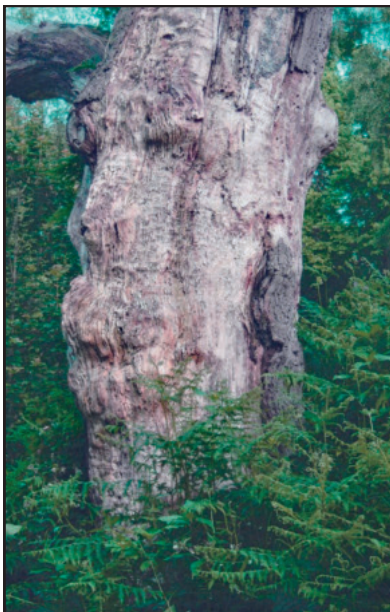


## "SCULPTED BY NATURE IN WEST END'S WOODS"

This quite remarkable picture was captured whilst on a walk through the woods.

You can clearly see the impression of a man's face—the eyes, nose and mouth!

*Colin Pendry*



## NEWBOULD & SONS

1 Church Street

Esher Surrey

KT10 8QS

Tel : 01372 465574

Web :

[www.jrnewbouldandsons.co.uk](http://www.jrnewbouldandsons.co.uk)



## WEST END FILMS 100TH FILM!

West End Films screens foreign language, indie and black and white classic films from September to May.

Films are screened at West End Village Hall. Doors open at 7pm and all films start at 7.30pm. No need to pre-book a seat – just turn up on the night but please join our mailing list first. You are welcome to bring along your own drinks.

Membership costs £10 per season with no additional costs to pay. Members may bring a guest to a film for £5.

Our website gives dates and details of the current season, plus a summary of previous films that we have screened.

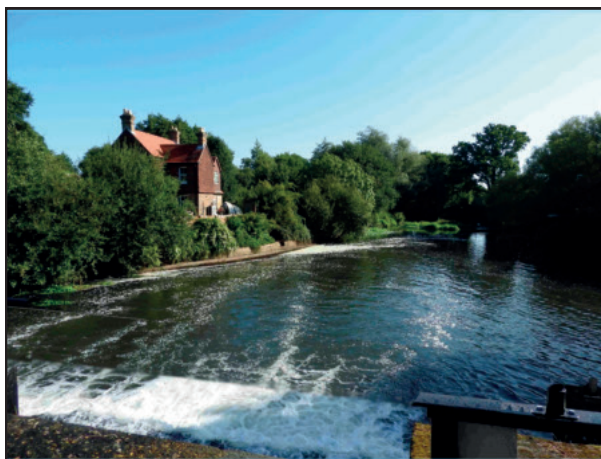
<http://www.westendfilms.co.uk>

This is our 20<sup>th</sup> season, and includes the screening our 100<sup>th</sup> film, David Lean's black and white classic *Great Expectations*. Other films this season include *Tabu*, a Portuguese film shot largely in Mozambique; *The Page Turner*, a French gripping psychological thriller; *Captain Phillips*, a tense dramatisation of a real-life highjacking off the Somalia coast; and *Captain Fantastic*, an off-beat film about a family living off-grid in Washington State and having to adjust to life in the real world.

Join us for our first film of the new season on 24<sup>th</sup> September at 7:00pm in the Village Hall

*Robin Crane* [westendfilms@btinternet.com](mailto:westendfilms@btinternet.com)

## WALSHAM WEIR AND LOCK RIPLEY



The lock on the River Wey Navigation dates back to the Seventeenth Century and thus to the early part of English canal history. With the water roaring over the weir, and with a neat cottage and footbridge alongside the lock, it is a good place to pause on a walk along the towpath, take some photos, or simply absorb the atmosphere.

The lock keepers cottage is the only fully manned facility on the Wey navigation. It is also the main weir downstream of Guildford.

*Photo: Don Tyzack*



# Brodie & Hickin Landscapes

Est. 1980

- Patios • Driveways • Brickwork • Fencing • Ponds • Turfing
- Decking • Pergolas • Tree Surgery • Planting Schemes

Urban Gardens to Large Estates - Fully Qualified Team - Fully Insured

We pride ourselves on being Reliable, Friendly & Efficient

Please call for a FREE estimate



**Phone: 020 8398 5000**

www.bhlandscapes.co.uk • Email: info@bhlandscapes.co.uk  
64 Couchmore Avenue, Esher, Surrey KT10 9AU

**West End Village Hall  
West End Lane  
Esher  
KT10 8LF**



Every Tuesday at 7pm, shimmy and shake the night away to this fun, high intensity 45 minute class



Every Tuesday at 8pm \*\*\*New\*\*\*

If you like the idea of a fitness class that feels more like a night out than a workout you'll LOVE Clubbercise! Fun, easy-to-follow dance fitness routines using glow sticks to old and new club anthems taught in a darkened room with disco lights.

Further classes will be added in September.

First class is free! Thereafter it's either £7.00 per class or £60.00 for a block of 10.

Re-usable glow sticks £5.00.

Please go to our Facebook page for further information



[www.facebook.com/surreyuk/](http://www.facebook.com/surreyuk/)  
MOB:07879447852



**West End Playgroup  
& Forest School.**

For children from 2 to 5 years

[www.westendplaygroup.org.uk](http://www.westendplaygroup.org.uk)

Tel: 01372 469157

**HOME COOKING  
by ELIZABETH  
(est. 1986)**

**Bespoke Caterers of Formal  
and Informal Events**

All types of events can be catered for in the delightful Village Hall in West End. Christenings, Memorial, Weddings, Children's parties and lots of other occasions. As part of our service we are happy to set up and clear up the hall to provide you with a complete service without stress.

We are happy to bespoke our menus and create your own menus.

We also cater in private homes as well as many venues in Surrey and beyond.

Please note our new address: The Showroom Wyvern House, 2 Church Road, Great Bookham (opposite the old shop).

Telephone: 01372 453206 Mobile: 07712 760175

email: etreliving@aol.com

Visit our site at: [www.homecookingdirect.co.uk](http://www.homecookingdirect.co.uk)



**VILLAGE NEWS WEST END**  
*Please make a diary note of the  
Christmas 2017 Edition Copy Date:*  
**Friday 17th November 2017**

If you wish to advertise, send in an article or photographs for the Christmas 2017 Edition please contact

Angela Stockbridge

Email: [angelastockbridge1115@gmail.com](mailto:angelastockbridge1115@gmail.com)

Tel: 07817 498531 or 01372 460703

The Village News is supported by local organisations including: the West End Village Club, The West End Summer Show Committee, Garsons, Winterdown WI, Richard Gale, Independent Advertisers and personal donations. The newsletter is printed by Impress Print Services, Hersham and Garsons.

**We thank you all for your continued support.**

## West End Village Hall



Ideal for children's parties, meetings, functions and family occasions.

Adult parties strictly for Village Residents only by special arrangement.

**TO BOOK**

Visit: [wevh.org](http://wevh.org)

Mail: [hirehall@wevh.org](mailto:hirehall@wevh.org)



**Wheatley**  
OF SONS LIMITED  
BUILDING CONTRACTORS

**Wheatley & Sons Limited**  
Established 1850

ESTABLISHED 1850. Telephone: 01753 601000  
BRIDGE ROAD, EAST MOLESEY,  
and HIGH STREET, ESHER.

**WHEATLEY & SONS,**  
(Successors to J. Wheatley & Sons, Ltd.)

**Builders, Contractors,  
& House Decorators.**

GAS, HOT WATER and SANITARY ENGINEERS,  
PLUMBERS, GLAZIERS, and BELL HANGERS.

Jobbing Work of every description with Bricklayers, Plasterers,  
Carpenters, Cabinet Makers, Painters, Paperhangers, Glaziers,  
Gilders, Plumbers, Gas and Bellfitters, Tinmen, Smiths, &c.

Carpets taken up, Beaten and Re-laid. Stoves and  
Ranges Supplied and Set. Boilers Cleaned. Kitchen  
Utensils Retinned.

HOUSE DRAINAGE & VENTILATION A SPECIALITY.  
DRAIN TESTS AND REPORTS.

PLANS prepared and advice given upon all matters  
connected with New Buildings, Additions, Alterations  
and Repairs.

FUNERALS FURNISHED in best style and conducted to  
any part of the country. Cremations arranged.  
Monuments, Brasses, Memorial Windows &c.

HOUSE & ESTATE AGENTS. FIRE & LIFE ASSURANCE.  
RENTS COLLECTED. VALUATIONS FOR ALL PURPOSES.

**NO JOB TOO SMALL**

Telephone 020 8979 5762

Fax: 020 8941 7388

Email:

[wheatley\\_sons@btconnect.com](mailto:wheatley_sons@btconnect.com)