



ANOTHER VERY SUCCESSFUL YEAR FOR THE VILLAGE SHOW

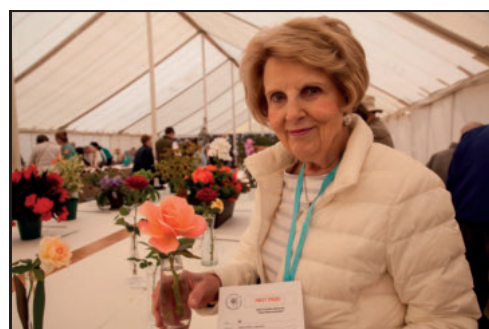


Chelsea Pensioner, Barrie Davey, presented the prize for the Best in Show Dog to Miss Marple, a Golden Retriever. Owner, Tricia Robinson from New Haw, was delighted with her success. Retired from the Royal Army Veterinary Corps, Barrie attended Bisley Military Boarding School and served at Trinity House after leaving the Army. He works in Schools with children and was thrilled to be invited to the Show.

The Best in Show Puppy was Madelaine, owned by Lily Grace and Norman Baehr.

Thank you for all your entries
Congratulations to all the winners!

See the Chairman's report and more



Margaret Dane won 1st Prize for her single Rose.
Below: A wonderful array of cakes and preserves



Left: The West End Playgroup and Forest School team organised the Children's Sports are seen here with two of the young winners.



Above: Bella Mayne won 1st Prize for her very pretty Flowers in a Vase in the 4-7 years category.



Above: 2nd Prize went to Katie Gordon, aged 2, for her decorated biscuits and below the 'Smash a Plate stall'.



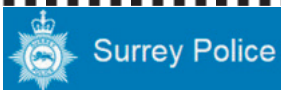
Bernie Carr (right) was an allotment holder in West End for 30 years and exhibited his produce on regular occasions at the Village Show, for the fun of it rather than through some competitive edge.

Bernie died peacefully in The Princess Alice Hospice on 7th August after a short illness. He was 84. His shallots (above) were entered in the Village Show on 25th August and won 1st prize. Bernie would have laughed. RIP.

Ciaran Gannon



IMPORTANT PLEASE READ.....



Call 999 for Emergencies only.

Call 0800 555111 for Crimestoppers.

**Call 101 - Surrey Police for General
Enquiries and non-urgent matters.**

This number will also transfer you to Esher Police
Station, which is open from

09.00-17.00 hours Monday to Friday.

Sgt 2190 Greg Turner covers Esher

PCSO 13867 Nigel Oates covers West End

PC40489 Chris Smith is the local PC Tel: 101 or ext. 38298

14614 Mike Bessent is the contact for Neighbourhood Watch.

Surrey Police, Elmbridge Borough :

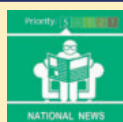
Tel: 101 Extension: 38857

Officers can be contacted by dialling 101 or email:

Elmbridge@surrey.co.uk

In the Know—Do you live in a flat?

◆ **Elmbridge has recently suffered four burglaries where the offender has entered first and second floor flats without causing damage to the individual entrance doors. Some blocks have access control on communal entrances if used correctly. Others have trade entrances giving uncontrolled access during certain times giving false sense of security. Please remember to use all locks on individual entrance doors to prevent giving the offender easy access.**



Open Letter Regarding Unauthorised 'Encampments' From Chief Constable, Nick Ephgrave



Dear Editor,

This summer has seen an unprecedented number of unauthorised encampments, no part of the county has been unaffected and as the

summer has passed, the amount of ill feeling and anger about a perceived lack of action by police has been palpable. The disappointing thing is that all of this was predicted and there is a practical solution available that would help. It has been successfully implemented in a number of surrounding counties, but has yet to be implemented in Surrey, leaving the local authorities and police with limited powers to deal with those intent on trespass.

Before I come to that solution, let me make it clear that there are two related but separate issues that need to be addressed. The first is the issue of an unauthorised encampment. This is of itself not a criminal matter and the lead agency for implementing eviction is the local authority, working with the land owner supported where necessary by the police. In this regard, it is absolutely the case that we in the police and our colleagues in the Boroughs and Districts have significantly upped our game this year and now have well-rehearsed and effective procedures for assessing and evicting unauthorised encampments in accordance with the legislation currently available to us. The shortcoming is that under the only legislation that we can utilise, there is nothing to stop those evicted from simply moving 100 yards down the road and setting up camp there. We then have to go through the whole rigmarole again and this is exactly what has happened this year, with repeated encampments as we follow groups round the county, creating further upset and disruption far and wide.

The related issue is that of criminality associated with some encampments. My clear direction to officers is that where there is criminality and where there is sufficient evidence to take action against identified perpetrators, then we will do so swiftly and firmly. The frustration comes when it is not possible to attribute a criminal act, for example criminal damage, to any one individual due to a lack of witnesses or other evidence to implicate them. This is no different to any other crime. One cannot simply arrest whole groups of people because 'one of them must have done it'.

Travellers pitched up on West End green, but were evicted after several days occupation after prompt action thanks to the Council. However, the mess left behind was appalling and a specialist team was drafted in to clean up the area at great expense.

Photo: Angela Stockbridge

So, what else might be done? Under the legislation, if a designated transit site is available, the police are enabled to direct, encampments to move immediately to the transit site, with far fewer criteria necessary to act. If those on the encampment refuse they are liable to immediate arrest. Currently, Surrey has no transit sites and so none of these powers are available.

An increasing number of surrounding counties have created designated transit sites and their experience has been that this significantly addresses the issue of unauthorised encampments. Surrey, without any such sites, remains vulnerable to those who know the legislation and understand that the powers available to police are more limited, no doubt making Surrey an attractive venue for those who wish to set up unauthorised encampments.

To conclude, I recognise the frustration and anger of local residents and businesses affected by unauthorised encampments. We will deal with criminality as and when it occurs and continue to support local authorities in their actions, but the options available to my officers are limited and given other demands, I can ill afford the enormous resource and energy my officers put in to dealing with this. The provision of even one transit site will make an enormous difference to our ability to respond to unauthorised encampments, but it is not in my gift to make it happen – that is a difficult political decision that sits with our local leaders who I know have the issue under active consideration.

Yours sincerely,

Nick Ephgrave, Chief Constable

WEST END OPEN GARDENS

Did you enjoy the variety and beauty of the
West End Open Gardens day in 2017?

Would you like to add your garden to this fun event
in June / July 2019 and help support the
Princess Alice Hospice?

If you do want to join us, you will be very welcome. Please
contact Anne on 01372 466233 or 07850 367600.

Many thanks to those who helped last year and we look
forward to hearing from you



PHOTOGRAPHIC CORNER

Katie Fernandes
took this
amazing
reflection of the
Heron on West
End Pond at the
height of the hot
dry summer when
almost all the
water in the pond
had evaporated.







VILLAGE NEWS ACKNOWLEDGEMENT

We are very sorry indeed to learn that the West End Residents' Association has been disbanded after so many years good work. However, the Village News team is hugely thankful for the very generous donation made by the final committee members. This is very welcome support.

WEST END BRIDGE CLUB

Clive's Big Hand

It was one of those Chicago afternoons we all know only too well. You get a bit excited when you spot a Jack lurking in your hand. Your seat seems a no-go area for Aces and Kings. So you get lulled into unfocused inactivity. Then, on the very last hand of the very last round, with everyone vulnerable, you pick up this little lot ...

	A
	A,K,J,10,8,4,3
	K,J,10,8,7
	Void

Practically, a self-contained slam in one hand. What would you bid? I was the dealer, and I decided to open softly, and said 'Four Hearts'. My left-hand opponent immediately bid 'Four Spades'. Pass from my partner, Pass from my right-hand opponent.

I realised it wasn't any good asking my partner for Aces, since if the answer was One Ace, I wouldn't know if it was the Ace of Diamonds (precious—almost a Grand Slam), or the Ace of Clubs (wasted because of my void). So I said 'Five Hearts', which was followed smartly by 'Five Spades' on my left. Two more passes.

I must admit the phrase "In for a penny, in for a pound" crossed my mind. I was not going to let my one decent hand of the afternoon evaporate. I went 'Six Hearts'. 'Pass'. 'Pass'. 'Double' from my right-hand opponent. Armed with my singleton Ace of Spades, I was reasonably confident, but not enough to Redouble, as this bid might tempt them into an escape sacrifice bid of 'Six Spades'.

The opening lead was the Ace of Clubs. My partner put down a fantastic hand including 4 Hearts to the Queen, the King, x,x of Spades, plus the Queen x,x of Diamonds. So all I had to do was draw trumps and force out the Ace of Diamonds.

Afterwards I reflected that I should have opened with a forcing bid of 'Two Clubs' (on a void!). I can only plead the sheer unexpected riches of the hand after a long drought.

West End Bridge Club meets 1.30pm every Tuesday afternoon at West End Village Hall. Ring Kay Moulton on 01372 464775 for further details.

Clive Craigmile

FOR SALE

BRITAX BABY-SAFE
ISOFIX CAR SEAT BASE
with instructions
AS NEW

£50.00 ono

Please call: Angela on 07817 498531
West End

LOCAL WRITER'S PUBLISHING SUCCESS

I wrote the novel as part of my MA in Crime Fiction at the University of East Anglia which I completed in 2017. Although I've written in all sorts of other genres, from comedy to factual drama to children's TV, I always wanted to write a spy novel. It was only by doing the course and having the opportunity to study the genre in some depth that I felt confident enough to attempt it - the deadlines helped too!

Merle Nygate



ESHER GREEN BAPTIST CHURCH



Hi there fellow West Ender's,

Ryan here from Winterdown Road and Pastor of Esher Green Baptist Church.

Just an update on some things that you may be interested in over the autumn period. So here we go:

Marriage Course starts 20th September - The Marriage Course is for any couple, whether you have been together for a year or 51 years and whether you feel you have a strong relationship or need some further pointers. The course takes place on Thursday evenings for 7 weeks from 7.30pm till 10pm and includes a romantic candlelit meal for two (including wine).

Each session has practical talks from DVD covering topics such as building strong foundations; the art of communication and resolving conflict. There is NO group work and any discussions will only take place between you and your partner.

For more information and to book your place please visit our website www.esherchurch.org

Film Club (second Monday evening of the month - 7.30pm) - Our popular Film Club also starts up again on 10th September. So why not come along and sit back in front of our massive cinema screen while enjoying free drinks (including wine), nibbles and great company. A great opportunity to make new friends and see great films!

And don't forget our Sunday morning service at 10.30am every Sunday! For more information on these and other activities please check out our website.

Every Blessing to you all and look forward to seeing you around in our lovely village.

Ryan (Pastor - Esher Green Baptist Church)
Esher Green Baptist Church (6 Park Road, Esher, KT10 8NP) - www.esherchurch.org

WEST END VILLAGE SHOW

Another successful Show!

After a blazing hot start to our summer, the weather was looking decidedly British for the 64th Village Show. Despite the threat of showers, the green was busy all afternoon with locals enjoying the sideshows, admiring the exhibits in the marquee and sampling the various food and drink outlets on offer, backed by the sounds of Epsom & Ewell Silver Band and Kingston Hospital Radio.

New to the Show this year, the committee ran a coconut shy, which proved a hit (and a few misses!) on the day. Alongside our long-lived tradition, Smash-a-Plate, we adopted the popular bookstall from WERA (a big thank-you to villagers for the donation of books).

For the Flower Show, the atmosphere inside the marquee was wonderful, colourfully decked out with exhibits from West End residents and beyond, in spite of the extraordinary summer weather which affected our gardens, flowers and produce. It was a testimony to the entrants' commitment to help 'the Show go on' – and it was great to see more new entrants than ever before. Traditionally there is stiff competition among the top three contestants in the vegetable and fruit categories and this year was no exception. However, it was encouraging to see several new faces take some prizes. Lin Martin swept the board in the different flowering classes. Some new names in the floral art classes also wowed the public.

Cookery and preserve classes looked as appetising as ever with a number of new entrants and novices gaining success. Chris Hall won the Cookery Cup. The Handicraft section continues to demonstrate a very high standard of craftsmanship. Marion Ford was able to retain the Silver Challenge Cup with 2 firsts and a second, while Lynn Healy was judged to have the best single handicraft exhibit. Newcomer, Michael Sullivan, took home the Michael Newbould Cup for the most winning points in the Photography section whilst also gaining the judge's choice for Best in Show.

A host of new names entered into the revamped Children's categories including Daniel Malloy who managed to lift the Junior Challenge Cup for the Under 8s, winning over stiff competition and his older sister Martha who picked up the Alex Hunter Memorial Cup for the 8-11 year olds. The Roger Marsden Bowl for 12-15 year olds went to Jack Hambleton in another close competition.

The Dog Show was well attended again this year with over 55 dogs entering. We were happy to see several returning for another year as well as many welcome new faces. A new class, 'Best Sausage Catcher', was certainly a crowd pleaser.

We were kindly sponsored by VOO Vets, who shared the judging with Sandy Newman. Best in Show was awarded to Marple the golden retriever (entered by Tricia Robinson of New Haw) and just over £250 was raised for Hearing Dogs for Deaf People.

The Arts & Crafts marquee comprised twenty interesting craft tables ranging from hand-made Liberty print gifts by Flax & Mallow to unique silver jewellery made by Oliver Jones. The exhibition of forty paintings and photographs from twelve artists included those by old favourites: the late well-known artist Anne Bull whose work was proudly exhibited by her husband Geoff and prominent local figure Lady Anne Hunt who not only exhibited her work but who provided much support behind scenes. There were some new artists and crafters together with regulars, some of whom have been attending the show in one guise or another for sixty years!

The Tug of War was reinstated in 2010 after a gap of twenty years, the Coronation Sports Day Shield having been unearthed from a local loft! Robin Crane again organised a Village team, pitched against Garsons. The Village has won the majority of 'Wars' since 2010 but it was a delighted Garsons team that won 2 pulls to 1 this year. The shield has pride of place somewhere on the Farm!

As ever, afternoon teas were very popular and the ladies and gents from Christ Church put their best foot forward to serve and

clear away hundreds of cups of tea and delicious cakes and cream teas.

We hope that everyone who attended the Show enjoyed all that was on offer. We are always keen to hear feedback as it helps the committee in making plans for future years. If you have any suggestions for improving the Show or would be interested in joining our team, I'd be delighted to hear from you. E-mail: steve@techniquesgroup.co.uk

Our aim is to provide an enjoyable traditional village event for all concerned and to showcase the village on the day. We remain ever grateful to our sponsors and advertisers who generously support our glossy programme that is delivered to every home in the village and is freely available at Garsons and other local businesses. We are also extremely grateful to the companies and individuals who donate raffle prizes. Without all of them and the kind subscriptions from villagers and donations from entrants, it would be impossible to fund the Show.

Acknowledgement must be given to the volunteers and extended family for their efforts in helping the committee on the day. In addition to the fun had on the day, our aim is that local charities and good causes should benefit and we are always proud to be able to make donations in this regard.

Our AGM will be held in the Village Hall on Monday 12th November at 8.00pm. Everyone is welcome!

Roll on next year...!

Steve Kelly and the Village Show Committee



Barrie Davey presenting the prize to Best in Show Puppy, Madelaine, and owners Lily Grace and Norman Baehr.

Bob Waller (right) won 1st Prize for his potatoes, a variety called 'Bluebell'.



Paul Gibson (left) won the Oddfellows Cup for the highest number of prizes in the vegetable classes and the Onion Cup for the best performance in the three onion classes.

Right: Meet 'Daphne', the black Schnoodle, complete with pink neck scarf, standing on her hind legs to get a better view of her competitors just like a Meercat!



Photos: Angela Stockbridge



Left: The budding young pop stars performing to an audience.

WINTERDOWN WI

Well we can't complain about the weather this summer or that events have been cancelled because of rain.

The Emlyn Group Centenary Celebrations were enjoyed by members especially the tea and cake.

Several members went to see the display of 'Pollinators' at Wisley and were impressed by the imagination of the exhibits albeit some were a little unusual.

The National Garden Scheme began 91 years ago and has raised over £50 million for charity. There are 75 gardens to visit in Surrey this year and some will open for private visits. We have managed to visit just four. In June we set off for a visit to a two acre garden in Ockham. This was in a very peaceful setting with a wild flower meadow, a stream and pond including its own resident ducks and ducklings.

The following month we went to visit The County Organiser's



The
County
Organiser's
garden

garden which was beautiful and made us all wish our own gardens could look like that.

Next we visited a garden in Chertsey and the weather was not kind to us that day. We arrived in a downpour and could not get out of our cars until it stopped. However, we were given tea and cake and a potted history of the garden before venturing outside. The garden proved to be very interesting and we spent a very enjoyable afternoon wandering around it.

The second week in August saw us setting off for a trip up the river to Windsor. We parked in the National Trust car park at Runnymede and took the opportunity to look at the artwork



The Jurors'
12 bronze
chairs by
Hew Locke

'The Jurors' by Hew Locke commemorating the 800th anniversary of the sealing of the Magna Carta.

The weather was perfect so we all sat on the top deck but we became a bit perturbed when the awning had to be lowered over our heads in order to get under a bridge. It had to be lowered again just before the boat docked and on that occasion we all had to go down to the lower deck.

One young passenger tried his hand at steering the boat up the river. Of course being August there were lots of tourists about. I imagine the swans were wise to this as there were flocks of them clamouring for food. We spent a very pleasant afternoon walking the 'Eton Walk' stopping at intervals for some historical input from Brenda Finn who had organised the trip for us. Mrs. Laurenson gave a talk for our July meeting entitled:



The group on a day
out by boat to
Windsor

'Me and my hats'. I think what we were expecting was a demonstration of hat making. What we actually got was a very amusing tale of her childhood in Sweden during World War II and later her life in England and how she came to make hats. She entertained us by modelling her one off unusual designs and made us all laugh.

Each year the Chris Burrows bursary for further education is awarded to one member. This year it was won by Ann Tennant who will be going to Denman College to do two courses. Sadly there were fewer entries in the marquee at the Flower Show this year but several members reported that they had done well in some of the classes. We will resolve to enter more next year. Congratulations to those who took part.

Coming up:

October 4th: **Kate McBain - Surrey Arts and Crafts**

November 1st: **Annual Meeting and social evening.**

Article and Photos: Caroline Thyer

Winterdown WI meet on the first Thursday of the month at 8.00pm in West End Village Hall. Visitors are always very welcome.

Contact: Secretary, Ann Tennant on 01372 466725 or visit our website: www.winterdownwi.co.uk

WEST END POND—WITH NO WATER!



West End, Halfpenny and the Chequers ponds all dried up completely in one of the hottest summers on record with temperatures above 30°C for many weeks.

THE PRINCE OF WALES



It is a pleasure to see all eight hanging baskets outside the Prince of Wales looking so colourful and in full bloom, despite the long and very hot dry summer.

Photos: Angela Stockbridge



West End Playgroup & Forest School

Tel: 01372 469157

westendplaygroup@gmail.com

www.westendplaygroup.com



ST GEORGE'S CHURCH WEST END

So, the roof of St. George's is done! We are sure you saw the scaffolding – and now that it's down, you can see the splendid results. There were some minor repairs and then two coats of a special product were applied which will ensure its life is extended by at least 10 years, but hopefully 15! We had budgeted for about £5,000 – but in the event the cheapest quote was just under £15,500. Somewhat of a difference! Therefore, the amazing profit from our cake/bread stall and raffle in St George's at the Village Show on 25th August has of course gone towards this expense. The church had a steady flow of visitors – and between them they supported us, enabling us to make a profit of £1,100 (at the time of writing). Our heartfelt thanks to you all for supporting us yet again.



Photo: Angela Stockbridge

Photos: Peter Bedford



The Christ Church team once again provided all the visitors on the day with their wonderful cream teas/cakes in the Village Hall

raising over £800. It's a lovely display of the fellowship of our two churches working together in the community. We're looking forward already to next year. In case you have not read this in time...we held our 11th Pet Service at 4pm on Sunday 16th September at St George's.

As we mentioned in the last newsletter, Stefan will be leaving Esher and so we are entering into a temporary period of being without a Rector, known as an Interregnum or a Vacancy. Rest assured that our usual 9am Sunday Eucharist services will continue as normal during this time.

For more information about all our services please do visit our website: <http://www.esherparish.org.uk> where you can find everything you might want to know about the Parish of Esher, including Music on The Green. We put topical notices and a monthly events calendar on the fence outside the church – so please do stop and look to see what's going on as you pass by. In the meantime, if any of you, or someone you know, would appreciate a home visit or would like to receive home communion, please contact the Parish Office on 01372 462282. Finally – thank you as always, for your continued support and as always, we look forward to seeing you at one of our Sunday services.

Andrea Lindow (462041) and Bridget Williams (462731)

MENINGITIS NOW



We are nearing the time our young people will be off to University/College. This is a time when they will be living in either halls of residence or in close proximity with others.

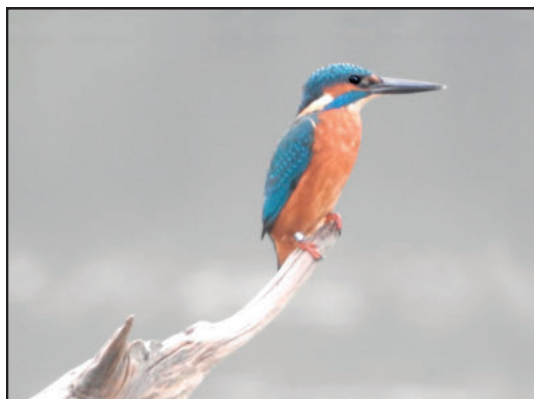
As an ambassador for Meningitis Now please can I encourage you to make sure your loved ones are taking advantage of the free vaccination offered by your GP.

University Freshers only have two weeks to get vaccinated against 'deadly' Meningitis W.

The latest figures from Public Health England show cases of Meningitis W have been increasing year on year

Alice Austin

This beautiful Kingfisher was taken by Don Tyzack at Warnham Nature Reserve, Horsham. Kingfishers are notoriously tricky to photograph. Well done Don!



PRUDENTIAL RIDE LONDON—29th JULY



The Poppy Bikes on Hospice roundabout were donated by Beavers Scouts and Elmbridge Remembers 1914-1918.

Photo: Angela Stockbridge



ARE YOU INTERESTED IN FRENCH LANGUAGE, LIFE AND CULTURE?

If so, do come to West End Village Hall to listen to carefully selected speakers talking in French on a variety of topics.

Talks take place monthly from October to June on the third Wednesday of the month except December when it is the second Wednesday. They start at 8.00pm, last for an hour and are usually attended by 60/70 members of the Cercle and visitors whose ability in the French language varies from the fairly basic to the completely fluent.

*Relaxed and friendly atmosphere *Free coffee and biscuits from 7.00pm *Only £5 per talk or £30 for the whole season.

Opportunities to improve your French at language workshops.

For further information or our complete programme, please contact:

*Brigitte Tiller on 01932 860842 or brigitte@ptiller.com or

*Cavan Taylor on 01932 864258 or cavan.taylor@btopenworld.com or

*Visit our website:

www.dontyzack.care4free.net/cercle.html



BUTTON AND BOW CLUB (FOR THE OVER 60S)

Autumn is on its way, but there is still a lot to look forward to at the "Busy Bs". The summer has been busy with outings, all well supported by members and friends of our very active club.

Successful outings to Kew Gardens, a day on HMS Belfast, which was a truly memorable experience, especially for the men in the group. The weather in Hastings was good and some members brought fresh fish home! Members are looking forward to a visit to Worthing and Amberley Museum in the near future.

Meals at the "Percy Arms" and "Olive Tree" have been enjoyed by all.

We recently enjoyed a horse drawn canal boat trip on a beautiful sunny afternoon and enjoyed a cream tea which was served during the cruise. It was enlightening to visit to The Grange where handicapped people are trained to carry out a trade. A cream tea which was prepared on the premises was also provided.

In October a trip has been arranged to visit "Middle Farm" in Lewes which will give us the opportunity to sample their cheeses, bread, cakes and fresh meat. It also has a Deli counter, plants, ciders, juices and wine

Plans are in hand for the **Charity Coffee Morning** with the usual stalls. A Canine demonstration will take place and, of course, the Grand Draw. All proceeds will go to "Canine Partners". **Please make a diary note of Saturday 15th September from 10-1pm.**

Why not pop in one Monday afternoon to meet us and enjoy a welcome, friendship and a lovely cup of tea or coffee. Mind you have to be over 60, but our members are both ladies and gentlemen. We have forty one members at present and room for more!

Find out more call Betty Bowpitt on 01372 465937.

EMBER MANOR IN SUMMER TIME

Like a good many organisations the members of Ember Manor meet up less frequently in the summer months than at other times of the year. Our regular meetings begin in September and finish in May, but we do meet up for social gatherings of one kind or another between those dates and enjoy a glass or two together, at the same time



catching up with all the personal gossip – as one does.

It was on such a beautiful late summer Sunday afternoon on September 2nd that Adam Guzy, our Worshipful Master for the year, held his Summer Party in the Village Hall. The guests were entertained by the cricket being played on our picturesque common which is admittedly a little threadbare after the dry hot summer we have enjoyed. I say enjoyed although you might argue that you can't be truly British if you actually enjoy any kind of weather – but perhaps that is the farmer in me talking.

In a change of career Adam was about to take up a new teaching post

on the following day so controlling his guests gave him a bit of a practise. Among those guests were many of the established members of the Lodge but we did entertain three prospective members and their families and Adam's grandmother of some 90 odd summers who is the widow of the late Jim Patching, Master in 1964.



There was present an age range of 90 years as the youngest guest was but three months old – she didn't drink a lot of Pimms.

When the traditional raffle had been drawn and £200 raised for the Master's chosen charity we all parted looking forward to our first regular meeting to be held on the third Monday in October and welcoming our potential members into Freemasonry. At the October meeting we entertain guests to dinner after the formal proceedings – if you would like to come along I am sure a member will be pleased to act as your host.

Derek Richardson



NEWBOULD & SONS

1 Church Street

Esher Surrey

KT10 8QS

Tel : 01372 465574

Web :

www.jrnewbouldandsons.co.uk

Brodie & Hickin Landscapes

Est. 1980

- Patios • Driveways • Brickwork • Fencing • Ponds • Turfing
- Decking • Pergolas • Tree Surgery • Planting Schemes

Urban Gardens to Large Estates - Fully Qualified Team - Fully Insured

We pride ourselves on being Reliable, Friendly & Efficient

Please call for a FREE estimate



Phone: 020 8398 5000

www.bhlandscapes.co.uk • Email: info@bhlandscapes.co.uk
64 Couchmore Avenue, Esher, Surrey KT10 9AU

West End Village Hall West End Lane Esher



Every Tuesday at 7.00pm Shimmy and Shake the night away to this fun, high intensity 45 minute class. First class is free! Thereafter it's either £7.00 per class or £60.00 for a block of 10.

Please go to our Facebook page for further information

<https://www.facebook.com/corefitnesssurrey/>

**Enjoy being part of the local community?
Like socialising with like-minded people?
Want to give something back ?**



If the answer to these questions is yes, then you may want to consider joining Surrey Masons.

Like any other team, Surrey Masons get together to socialise, have fun and meet interesting people. However, the added benefit of being in our team is that we also focus on giving back to our local community and helping those in need.

It is not widely known that we support a number of local charities such as Shooting Star Chase children's hospice and buy air ambulances for Surrey, London and Yorkshire. We also work hard to improve the quality of life for those around us.

To find out more, please contact
Phil Lewcock on 07776 227253
phil.lewcock1@gmail.com

SO HOW DO WE DO IT?

Amazingly all of this has been done while having a laugh and spending time with like-minded people.

We have an extensive range of activities including formal dinners and lunches, summer barbeques, quiz nights as well as weekends away both at home and abroad - also open to partners and families, not just for the guys...

In Esher, we are all members of the West End Sports and Social Club and meet regularly in the village hall and cricket pavilion.

If this has sparked your interest, why not contact us and try us out at one of our many dinners or socials? We look forward to meeting you!



VILLAGE NEWS WEST END

Please make a diary note of the copy dates for next two editions:
Winter: Thursday 8th November
Spring: Friday 8th March 2019

please contact

Angela Stockbridge

Email: angelastockbridge1115@gmail.com

Tel: 07817 498531 or 01372 460703

The Village News is supported by local organisations including: the West End Village Club, The West End Village Show Committee, Garsons, Winterdown WI, Richard Gale, West End Village Hall Committee, The West End Residents' Association, Advertisers and personal donations. The newsletter is printed by Impress Print Services of Hersham and Garsons.



Bespoke Catering Of Formal & Informal Events



WEDDINGS
MEMORIALS
CELEBRATION PARTIES
CHRISTENINGS
CORPORATE EVENTS
HOUSE WARMING PARTIES
THEMED PARTIES
SMALL PRIVATE FUNCTIONS
DISHERS AND PLATTERS

ELIZABETH TRELIVING

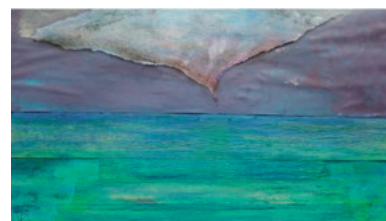
HOME COOKING BY ELIZABETH

The Showroom 1 Church Road Great Bookham KT23 3PD

T: 01372 453206 M: 07712 760175 E: ejtreliving@aol.com

Or visit our website www.homecookingdirect.co.uk

Beginners Drawing and Watercolour class



Come to the art studio in Esher.

Every Tuesday

7.15pm to 9.15pm. 12 week course discount

After School Art class for children 6+yrs



Every Tuesday 4pm to 5.30pm
12 week course discount

Contact Lucinda (FE Tutor) on 07971 603876