



The Village News team would like to wish all its readers a Very Happy Christmas and New Year.

We hope you all enjoy the festive season and the events arranged in the village to celebrate Christmas and the incoming New Year. Thank you to all those who contribute to the newsletter helping to keep all our residents informed of local events and news of village life in West End! Thank you too to all the volunteers who help distribute the news and for the generous donations both individuals and organisations make to help with the printing costs. We look forward to bringing you news throughout 2018 which will be our 14th year of publication.

REMEMBRANCE SERVICE AT ESHER WAR MEMORIAL



The Bells of Christ Church rang for the Remembrance service which was very well attended by local residents. Those on parade at the service were: Air Cadets from 1034, (Surbiton and Esher) Squadron, the Guides, Esher 1st Brownies, Rainbows, the Royal British Legion and Ember Manor Lodge. The service was led by Revd Dr Stefan Collier (above) and Revd Nate Kurz. The service was one of reflection and prayers for those who gave their lives in both World Wars as well as more recent conflicts. West End resident, Malcolm Parsons (right), laid the wreath on behalf of West End Village Club, Mark Bisson for West End Residents' Association, Chris Graham for Village News and Andrea Lindow (below) on behalf of Winterdown WI.



BUTTONS & BOW CLUB

Betty Bowpitt and her wonderful team recently organised a Charity Coffee Morning in the Village Hall in aid of the Air Ambulance Service and raised a staggering £897.60 in just four hours for the charity. See Betty's report on page 4.



Betty with Jackie Robertson, a representative from the Air Ambulance Service, who attended the event and auctioned a model of the Air Ambulance helicopter.



Photos: Angela Stockbridge

ESHER GREEN BAPTIST CHURCH

Hello to my fellow residents of West End,

After taking over as Pastor of Esher Green Baptist Church, on Park Road, my wife Val and I moved into Winterdown Road in August of this year. What an amazing place to live . . . not only in terms of the location . . . but the lovely people as well.

So firstly, a massive thank you to those of you who have welcomed us and have shown us such kindness. We are now looking forward to spending our first Christmas together and can promise you are very warm welcome should you like to pop along to one, or more, of our Christmas services (details below).

Christmas is a time when we remember that . . .
'God so loved the world that he gave his one and only Son, that whoever believes in him shall not perish but have eternal life' John 3:16.

An elderly man I met a while ago, who reported having never believed in God, commented "I am undecided about Jesus, but I suppose I haven't got anything to lose by finding out more after all if it is true, his birth is indeed the most amazing and significant event in human history".

So this Christmas season, why not come along to one of our services and find out for yourself. What have you got to lose?

Warmest regards to you all,

Ryan Ahern
 Pastor—Esher Green Baptist Church

Esher Green Baptist Church Services (6 Park Road, Esher, KT10 8NP)

Sunday 10 December

10.30am - The Awesome EGBC Kids Nativity Service!

Sunday 17 December

6.30pm - Candlelit Carol Service followed by mince pies.

Sunday 24 December

10.30am - Christmas Eve Family Service . . . the excitement is building!

11.30pm - Candlelit Midnight Service (including Communion)

Monday 25 December

10.30am - Christmas Day Family Celebration. Christmas has arrived!

Come along in your Christmas jumpers or onesies with a chance to win our competition!

Sunday 31 December

10.30am - New Year's Eve Family Service



IMPORTANT:

Please be aware that there has recently been a number of house and garage burglaries in West End. Two men were apprehended following a garage break in. A car was also stolen from West End Lane.

PLEASE ENSURE YOUR DOORS, WINDOWS, CARS, SHEDS AND GARAGES ARE SECURELY LOCKED. DO NOT LEAVE VALUABLES IN YOUR UNATTENDED VEHICLES.

**Please watch out
 burglars are about!**



We are delighted to announce the winner of the Christmas Card Competition in aid of St George's Church, West End



1st Prize was awarded to a beautiful watercolour of St George's Church, West End, entitled 'Winter Welcome' by Jenelle Latcham

Congratulations to Jenelle

1st Prize was a bottle of Taittinger Champagne kindly provided by Derek Richardson



Runner-up: A photograph of 'The Frozen Cobweb' by Angela Stockbridge. A very welcome bottle of Nicolas Feuillatte Champagne was donated by Peter and Naomi Bedford

A huge thank you to all the entrants who took part in the competition. There were twenty one entries, both watercolour paintings and photographs. Ros Moysen kindly offered her Stable Studio to exhibit the pictures and the public were invited to come and view before the judges made their final decisions.

Margaret Dane, (President of Dorking Camera Club), Eileen Pocklington (whose career spanned many years in marketing and publicity) and Colin Pendry (a local artist) judged the competition which was followed by a short celebration.

The cards are on sale at the Village Club, Christ Church, St George's Church, West End, various local organisations and the Stable Studios in West End Lane.

Thank you to Derek Richardson and Peter and Naomi Bedford for generously providing the prizes of Champagne. The competition was sponsored by Village News.

SURREY POLICE

IMPORTANT PLEASE READ.....

Call 999 for Emergencies only.

Call 0800 555111 for Crimestoppers.

Call 101 - Surrey Police for General Enquiries and non-urgent matters.

This number will also transfer you to Esher Police Station, which is open from

09.00-17.00 hours Monday to Friday.

Sgt 2190 Greg Turner covers Esher

PCSO 13867 Nigel Oates covers West End

PC40489 Chris Smith is the local PC Tel: 101 or ext. 38298

14614 Mike Bessent is the contact for Neighbourhood Watch, Surrey

Police, Elmbridge Borough :

Tel: 101 Extension: 38857

Officers can be contacted by dialling 101 or email:

Elmbridge@surrey.co.uk



IN THE KNOW: SURREY AND SUSSEX

Follow our advice to help ensure that your shed isn't broken into, and reduce the amount of power tools and DIY equipment that you put on your letter to Santa .

- ☐ Use good quality fixings and a padlock to secure doors
- ☐ Use anti-tamper screws in door hinges
- ☐ If possible, lock any windows
- ☐ Fit a mains or battery powered alarm
- ☐ Use a forensic coding product to 'property mark' all valuable tools and equipment with your postcode/house number
- ☐ If possible, secure lawnmowers and other valuable equipment to a shed or garage wall
- ☐ Lock tools away when you aren't using them.

For more advice on how you can protect your home and belongings, please visit our website: <http://surreybe.at/65hk1>

**After School Art class for
children
Aged 8+ upwards**

3.30pm to 5.00pm



Come to the art studio in West End Lane Esher

**Starts Tuesday 3rd October
Every Tuesday**

Contact Lucinda (FE Tutor) on 07971 603876
about the 10 week course discount or pay £9.00
per session

**ELMBRIDGE COUNTRYSIDE TEAM
WORK IN WEST END**

The Elmbridge Countryside Team has been doing an excellent job, working on Chequers and Halfpenny ponds, scraping away the invasive weed Australian Water Stonecrop (*Crassula helmsii*), which has an inhibiting effect on the natural flora. Seen here are the guys with their machinery on Chequers pond, and the resultant beautiful reflections on a much improved habitat!

Photos: Peter Bedford



STORE OPENING HOURS:
Monday - Saturday
9am - 5pm*
*6pm festive hours
1st - 22nd December

Sunday
11am - 5pm

REINDEER OPENING HOURS
Monday - Saturday
10am - 5pm

Sunday
11am - 4.30pm
*Reindeer leave at 1pm Christmas Eve

**SANTA'S
REAL REINDEER**

25th November - 24th December

For more info visit www.garsons.co.uk

Winterdown Road,
West End,
Esher,
KT10 8LS

[f](#) [t](#) [i](#) [s](#)

01372 460181

TREE FELLING IN WINTERDOWN ROAD

A number of complaints about the sudden removal of trees in Winterdown Road have been received. Nik Wilkinson writes:

“According to the tree surgeon from Connicks, it was as a result of an Elmbridge “tree survey” and was deemed to be hazardous. I think this is an example of extreme risk aversion on the part of the council - taking out a much loved and perfectly good tree “just in case”. I also believe that prior consultation and one tree planted for each removed should be a minimum that we should expect from Elmbridge.”

*Photo:
Nik Wilkinson*



REMEMBRANCE DAY FLOWERS



The beautiful flowers in Christ Church.

The wreath on top of the font was provided by the Royal British Legion, Janet Bekenn created the artistic floral arrangement at base of the font, and Carole Calvert arranged the flowers by the altar.

WEST END RESIDENTS' ASSOCIATION



In the last Village News we informed you that Susannah Bramley had resigned as Chair and we asked for local residents to consider stepping forward to be involved in the committee and specifically take on the role of Chair. In the absence of any interest I have offered to be Acting Chair until our AGM in May next year.

At our last meeting the committee had a well considered conversation about what the future focus of the residents association should be and we looked at examples of terms of reference from other village Residents' Associations.

We agreed that we should engage with residents to find out what you want from WERA by using the period leading up to the AGM to have conversations with you and then bring the themes from those conversations to the AGM.

We would like to hear your views about the following questions

What do you think of the following future purpose statement for WERA?

The purpose of the West End Residents' Association (WERA) is to protect and enhance the local environment and amenities and to help build and maintain a sense of community which enhances the quality of life for residents of West End.

What do you think the future focus of WERA should be?

What do you think about the concept of being part of an existing online community hub? (For instance NextDoor.co.uk or collaborating with the recently launched whatsinesher.co.uk)

I am really looking forward to receiving your thoughts and comments. My email address is mark.bisson@btinternet.com

On a separate note I attended the Remembrance Service at the Esher War Memorial and laid a wreath on behalf of the residents of West End. As always it was a fitting act of reflection remembering those that fought and what they fought for and that they gave their today for our tomorrow.

Mark Bisson

BUTTONS & BOW CLUB

My, what a busy summer we have had, we really are "Busy B's"! We have been to Sheffield Park, taken a trip on the Bluebell Line, enjoyed a day in Bognor, a holiday at Warners Hotel in Hayling Island, and visited Kensington Palace to see the Princess Diana Exhibition and White Garden.

Each month we board the mini bus and go to lunch together, when you live on your own it is very special to enjoy the company of others. Visits to restaurants such as Oatlands Park Hotel, the "Percy Arms", "Good Intent", "Olive Tree" and "The Anchor".

We held our yearly Charity Coffee Morning in West End Village Hall on 30th September with many stalls and a Grand Raffle. Many prizes were donated by local businesses. A staggering £897.60 was raised in four hours for the charity "Air Ambulance" who cover Kent Surrey and Sussex. The service carries out wonderful work to save lives. A representative from the charity joined us and conducted an auction of a model Air Ambulance, a "one-off". Thank you to all who came along and supported us. We are preparing for our "Turkey and Tinsel" holiday in Weymouth ensuring we return for the festive celebrations.



Betty with May Baggott and Jacky Spurdle

Christmas Lunch at "The Donkey" in Elstead, the Carol Service in St George's Church, West End, on Monday, 4th December, followed by mince pies and a hot drink at the Village Club. Please do come and join us—all welcome.

The Christmas Party follows with a visit from Father Christmas who will arrive with his 'little fairy'. We welcome in the New Year with a visit to the Pantomime "Robin Hood". The Club reopens on Monday, 8th January at 2.00pm.



Pamela Busby and Valerie Glassey



Barbara Maguire and Stella Lynn on the cake stall

May we wish you all a very Happy, Healthy and Peaceful 2018

Interested in joining us, please call me, Betty Bowpitt on 01372 46559437

HURRICANE OPHELIA

Saharan sand combined with ash particles from wildfires in Portugal and Spain were swept across the UK by Hurricane Ophelia from the Atlantic, bringing high winds and storms to parts of Ireland and the

North West. It cast an eerie light of red and orange skies with a huge red moon on Monday 16 October 2017. This strange phenomenon was nicknamed in the press as 'Red October'.

This snap was captured at 5.25pm near Redhill.

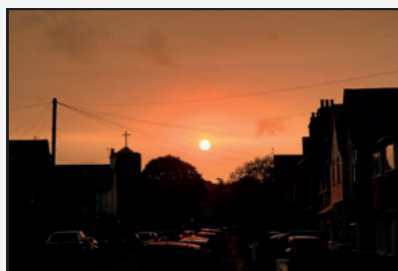


Photo: Angela Stockbridge

ST GEORGE'S CHURCH WEST END

Many of you will already know that Peter Lindow, our Deputy Churchwarden for many years, even longer standing member of our congregation and very dear friend to many in the village – sadly lost his determined battle on 17th September.



Peter was always to be seen both inside and outside the church, often with a ladder, scrapers, paintbrushes – doing anything he could to ensure our lovely little church continued to look the part as a focal point of the village. His love, care and devotion to its upkeep moved us all to continually think of ways to raise money to help fulfill his challenges. We shall continue to do so, always remembering Peter as we work to keep St George's your welcoming local church. We are both delighted and

grateful that Peter's wife, Andrea, has agreed to take up the baton as Deputy Churchwarden - and continue to oversee the running of St George's.

Bishop Andrew (Bishop of Guildford) visited both St George's West End and Christ Church in Esher to preside over our services on Sunday 17th September. It was a wonderful opportunity for us to welcome him to West End (his first visit) and for him to get to know what must be one of the smallest churches in his Diocese. Over coffee he made a great hit with the children by letting them try on his Mitre (see the picture below). It was a shame we couldn't manage to persuade him to return in the afternoon for our Pet Service, which seemed to be more popular than ever this year (13 dogs, 2 rabbits and a lot of people!). Our speaker was Lynda Pitt from Pets as Therapy (PAT) with her PAT dog Maisie. Lynda visits the Princess Alice Hospice every week with Maisie and they both met Peter the week before he died; she has chosen to donate the money raised at the service to the Hospice in memory of Peter, who died that day.



Left: William McCann carrying the Crozier (shaped like a Shepherd's crook) and donning the Bishop's Mitre

As we approach Christmas, please make a note in your diaries of our forthcoming services at St George's (see our website for other Christmas services at Christ Church).

CHRISTMAS EVE - Sunday 24th December

9am Eucharist

3pm Crib Service

6pm Village Carol concert (organized by the Village Club)

CHRISTMAS DAY - Monday 25th December

9am Eucharist

For more information about all our services (at both churches) please do visit our website: <http://www.esherparish.org.uk>

Here you can find everything you might want to know about the Parish of Esher, including Music on The Green. We put topical notices and a monthly events calendar on the fence outside the church – so please do stop and look to see what's going on as you pass by.

In the meantime, if any of you, or someone you know, would appreciate a home visit or would like to receive home communion, please contact the Parish Office on 01372 462282.



(left) Bishop Andrew with Revd Nate Kurz

Finally – thank you as always for your continued support.

We wish you all a very Happy Christmas and New Year.

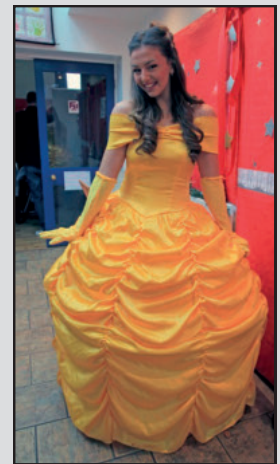
*Andrea Lindow and
Bridget Williams.
Photos: Peter Bedford and
James Lindow*

CHRISTMAS FAIR Saturday 18th November

Anne Hunt and her team organised a superb Christmas Fair, full of festive fun, in the Village Hall to raise funds for The Princess Alice Hospice. A competition for the best dressed Elf and Fairy was held. There was a colourful display of arts and crafts for sale including hand-made crackers, cards, jewellery, pottery, woodwork, candles, knitted toys, soft furnishings, pictures and Guess the Weight of the Christmas cake.



Above: Anne's team. Right: Princess Honor of Singing Princess Parties. Below: The hall was decked out with an array of wonderful gifts to purchase. A magnificent £2,598.83 was raised for the Princess Alice Hospice.



Photos: Angela Stockbridge

WEST END BRIDGE CLUB



When there's a Master Trump still out against you

....very often it's better to leave it out, and try making your smaller trumps separately. Why pay two of your own trumps to wrinkle out a trump that is going to win a trick whatever happens?

Take a look at this hand where South is Declarer in 4 Hearts, with neither side vulnerable. West leads the King of Clubs.

♠	Q 10 7 6	N	♠	J 9 8 2
♥	9 8	W	♥	Q J 10
♦	Q J 5	E	♦	10 9 8 4
♣	K Q 10 9	S	♣	J 6

Declarer takes his Ace of Clubs and Sets about trumps, cashing his Ace and King of Hearts.

♠	K 4 3
♥	A 7 6 3 2
♦	K 3
♣	A 5 4

Both opponents follow suit, so there is a master trump, the Queen of Hearts, outstanding. Ignore it. Don't waste two of your trumps to get it out when it will win a trick anyway. This would lead to your failing in your contract.

Instead, play King and Ace of Diamonds, and trump the 2 ♦ in your own hand. Now over to the Ace of Spades, back to the King of Spades, and trump the 3 of Spades. You are in the process of 'eliminating' the Diamond and Spade suits.

You are now in Dummy, and lead the 6 of Diamonds. When you trump this card successfully, you have made your contract. But you wouldn't have minded if you had been overtrumped by the Queen of Hearts, the master trump because that would have cost you only one trump, not two. You'd have still had a trump left to land your contract of 4 Hearts.

Note that if you're defending this type of situation, you should strive to kill two birds with one stone and account for two of Declarer's trumps with your Master Trump.



West End Bridge Club meets every Tuesday afternoon at 1.30pm at the Village Hall. It's Rubber Bridge, but with Chicago each first Tuesday in the month.

Ring Kay Moulton for details on 01372 464775

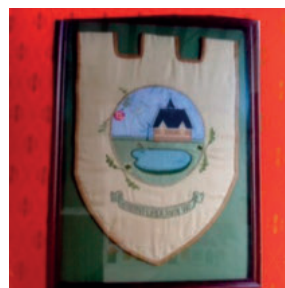
Clive Craigmile

WINTERDOWN WI

Winterdown WI has celebrated another successful year. The Annual meeting this year started with a 'fish and chip' supper which proved immensely popular. The business of the meeting followed and resulted in the existing Committee being voted in again for another year.

The monthly meetings have been well attended. The committee have worked hard to provide an interesting and varied programme with talks, outings and social meetings. The most recent have been theatre trips to see 'Funny Girl' in London and 'Carousel' at the Rhoda McGraw Theatre in Woking, coming up: 'The Ladies in Lavender' and 'An American in Paris'. We have been to Guildford Cathedral for a lunchtime concert followed by a private tour of the Cathedral led by Janet Matthews one of the guides who had been to speak to us in August. We all enjoy Ann Tennant's 'craft' afternoons and last month she crammed seven members into her sitting room. Not an awful lot of craft goes on there but it is good exercise for the tongue!

Winterdown continues its membership of the Emlyn Vale group and looks forward to participating in the planned events. 2018 will be the Centenary of Surrey Federation WI and everyone is busy organising events to celebrate this. There is to be a 'Centenary Book' which will have a contribution from each WI in Surrey. This is to consist of a very brief history accompanied by a photo or a piece of art work or craft. Some of our founder members put their heads together and have written a 'potted' history with a maximum 300 words. To accompany this we have sent in a photo of our Banner which has pride of place on the wall in the Village Hall.



Winterdown WI Banner

As we are self-funding it is necessary to raise money in order to enjoy good speakers. We have had two successful 'Bridge Teas' this year which means some much needed funds for our WI.

Due to the generosity of the late Chris Burrows we are fortunate to be able to give a bursary each year towards further education. The winner this year will be doing a Pilates course. Unusually Winterdown can boast four Bell Ringers amongst its members and they are pleased to be able to play a part in the Remembrance Sunday service. It was a bitterly cold morning on the 12th of November and we are very grateful to Andrea Lindow who laid a Wreath on behalf of our WI. Pictured below ready to ring the bells are Margaret Dollimore and Pat Chapple.

Below: Margaret and Pat with Stanley in the background



Our membership has increased this year and we are looking forward to another year of activities and friendship.

Winterdown WI meet on the first Thursday of the month at 8.00pm in West End Village Hall. Visitors are always very welcome.

Contact: Secretary, Ann Tennant on 01372 466725

or visit our website: www.winterdownwi.co.uk

Report and photos: Caroline Thyer



ARE YOU INTERESTED IN FRENCH LANGUAGE, LIFE AND CULTURE?

If so, do come to West End Village Hall to listen to carefully selected speakers talking in French on a variety of topics.

Talks take place monthly from October to June on the third Wednesday of the month except December when it is the second Wednesday. They start at 8.00pm, last for an hour and are usually attended by 60/70 members of the Cercle and visitors whose ability in the French language varies from the fairly basic to the completely fluent.

*Relaxed and friendly atmosphere *Free coffee and biscuits from 7.00pm *Only £5 per talk or £30 for the whole season.

Opportunities to improve your French at language workshops.

For further information or our complete programme, please contact:

*Brigitte Tiller on 01932 860842 or brigitte@ptiller.com or

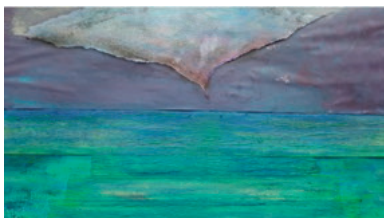
*Cavan Taylor on 01932 864258 or cavan.taylor@btopenworld.com or

*Visit our website:

www.dontyzack.care4free.net/cercle.html



Beginners Drawing and Watercolour class



Come to the Art Studio
in West End Lane
Esher

Every Tuesday night
7.15pm to 9.15pm

Wednesday daytime class and Wednesday evening class starts January 18 2018

Contact Lucinda (FE Tutor) on 07971 603876
about the 12 week course discount or pay £12
per session

KENT SURREY AND SUSSEX AIR AMBULANCE

This photo of the Kent Surrey and Sussex Air Ambulance was captured by chance, in action, as it landed in the Recreation ground in Merstham. It had flown in to attend a 70 year old man who had fallen from a ladder. He was lucky not to be more seriously injured, but suffered a broken shoulder and was eventually taken to hospital by road! After an informative chat with the pilots while they waited for news from the Doctor and Paramedic, we watched the helicopter take off again on the way to its next emergency!

Angela Stockbridge



NEWBOULD & SONS

1 Church Street

Esher Surrey

KT10 8QS

Tel : 01372 465574

Web :

www.irnewbouldandsons.co.uk



WEST END FILMS

West End Films screens foreign language, indie and black and white classic films from September to May.

Films are screened at West End Village Hall. Doors open at 7pm and all films start at 7.30pm. No need to pre-book a seat – just turn up on the night but please join our mailing list first. You are welcome to bring along your own drinks.

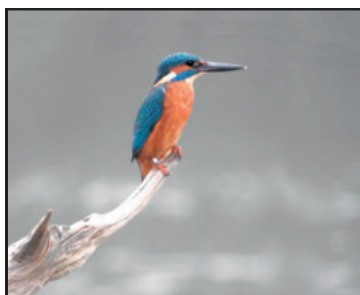
Membership costs £10 per season with no additional costs to pay. Members may bring a guest to a film for £5.

Our website gives dates and details of the current season, plus a summary of previous films that we have screened.

<http://www.westendfilms.co.uk>

Robin Crane westendfilms@btinternet.com

PHOTOGRAPHIC CORNER



A beautiful Kingfisher and a Grass Snake swimming.
These stunning photos were sent in by Don Tyzack.



Brodie & Hickin Landscapes

Est. 1980

- Patios • Driveways • Brickwork • Fencing • Ponds • Turfing
- Decking • Pergolas • Tree Surgery • Planting Schemes

Urban Gardens to Large Estates - Fully Qualified Team - Fully Insured

We pride ourselves on being Reliable, Friendly & Efficient

Please call for a FREE estimate



Phone: 020 8398 5000

www.bhlandscapes.co.uk • Email: info@bhlandscapes.co.uk
64 Couchmore Avenue, Esher, Surrey KT10 9AU

West End Village Hall West End Lane Esher



Every Tuesday at 7.00pm Shimmy and Shake the night away to this fun, high intensity 45 minute class. First class is free! Thereafter it's either £7.00 per class or £60.00 for a block of 10.

Please go to our Facebook page for further information

<https://www.facebook.com/corefitnesssurrey/>



West End Playgroup & Forest School.

For children from 2 to 5 years

www.westendplaygroup.org.uk

Tel: 01372 469157

HOME COOKING by ELIZABETH (est. 1986)

**Bespoke Caterers of Formal
and Informal Events**

All types of events can be catered for in the delightful Village Hall in West End. Christenings, Memorial, Weddings, Children's parties and lots of other occasions. As part of our service we are happy to set up and clear up the hall to provide you with a complete service without stress.

We are happy to bespoke our menus and create your own menus.

We also cater in private homes as well as many venues in Surrey and beyond.

Please note our new address: The Showroom Wyvern House, 2 Church Road, Great Bookham (opposite the old shop).

Telephone: 01372 453206 Mobile: 07712 760175
email: etreliving@aol.com

Visit our site at: www.homecookingdirect.co.uk



VILLAGE NEWS WEST END

*Please make a diary note of the
Spring 2018 Edition Copy Date:
Friday 23 February 2018*

If you wish to advertise, send in an article or photographs for the Spring 2018 Edition please contact Angela Stockbridge

Email: angelastockbridge1115@gmail.com

Tel: 07817 498531 or 01372 460703

The Village News is supported by local organisations including: the West End Village Club, The West End Summer Show Committee, Garsons, Winterdown WI, Richard Gale, Independent Advertisers and personal donations. The newsletter is printed by Impress Print Services, Hersham and Garsons.

We thank you all for your continued support.

West End Village Hall



Ideal for children's parties, meetings, functions and family occasions.

Adult parties strictly for Village Residents only by special arrangement.

TO BOOK

Visit: wevh.org

Mail: hirehall@wevh.org



Wheatley & Sons Limited
Established 1850

Telephone: 01753 601000
175 P.O. KINGSTON

BRIDGE ROAD, EAST MOLESEY, and HIGH STREET, ESHER.

WHEATLEY & SONS,
(Successors to J. Wheatley & Sons, Ltd.)

Builders, Contractors, & House Decorators.

GAS, HOT WATER and SANITARY ENGINEERS, PLUMBERS, GLAZIERS, and BELL HANGERS.

Jobbing Work of every description with Bricklayers, Plasterers, Carpenters, Cabinet Makers, Painters, Paperhangers, Glaziers, Gilders, Plumbers, Gas and Bellfitters, Tinsmen, Smiths, &c.

Carpeting taken up, Beamed and Refitted. Stoves and Ranges Supplied and Set. Boilers Cleaned. Kitchen Utensils Renowned.

HOUSE DRAINAGE & VENTILATION A SPECIALITY.
DRAIN TESTS AND REPAIRS.

PLANS prepared and advice given upon all matters connected with New Buildings, Additions, Alterations and Repairs.

FUNERALS FURNISHED in best style and conducted to any part of the country. Cremations arranged. Monuments, Brasses, Memorial Windows &c.

HOUSE & ESTATE AGENTS. FIRE & LIFE ASSURANCE. RENTS COLLECTED. VALUATIONS FOR ALL PURPOSES.

NO JOB TOO SMALL

Telephone 020 8979 5762

Fax: 020 8941 7388

Email:

wheatley_sons@btconnect.com