



**Volume 13 Issue 1**

**SPRING 2015**

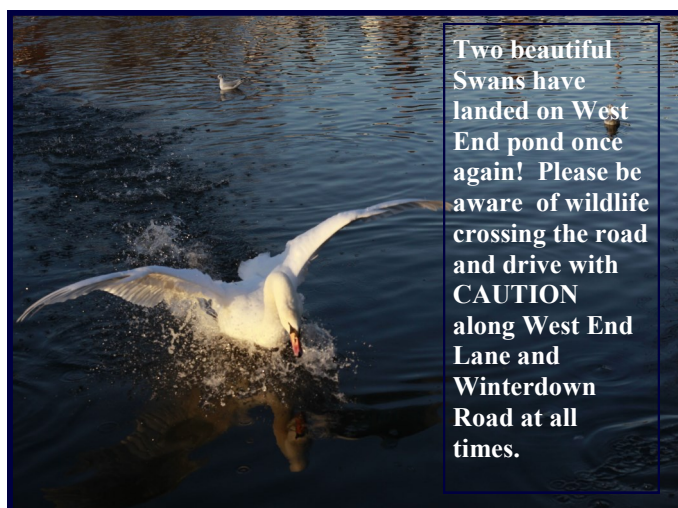


Kate O'Halleran and Julie Simmonds with playgroup members, Leon, Conor, Stella, Max and Joe enjoying a nature trail on a Forest School day in West End woodlands. *Photograph: Helen Yates*



### **WEST END'S FAMOUS PLANT IS BACK!**

See the Countryside Team's report inside!



Two beautiful Swans have landed on West End pond once again! Please be aware of wildlife crossing the road and drive with **CAUTION** along West End Lane and Winterdown Road at all times.

### **WEST END PLAY GROUP CELEBRATES 40 YEARS .... OF GROWING!**

Set in the Village Hall with an outdoor space overlooking the village green, the West End Playgroup has been providing child-led pre-school education to local 2-5 year olds for over 40 years! This continuing success can be attributed to the committed staff bringing a wealth of skills and expertise in early years education to the care of the children.

As we approach summer endless opportunities abound for children to experience the outdoors. To this end West End Playgroup offers the option of partaking in Forest School afternoons. Forest school, long a tradition in Scandinavia, has a burgeoning following in this country. A rake of recent scientific studies indicate that time spent playing in the natural world has a hugely positive impact on health and well-being. Using the adjacent woodland setting of West End, forest school allows the children the freedom to explore nature using multiple senses - all the time being supported by a high ratio of adults to children. Children are encouraged to be independent, carrying their own bags and trudging through the woodland like little explorers. Stories are read aloud while the children sit on logs sipping hot chocolate. Children are greeted by parents and carers at the end of an adventurous day – rosy-cheeked, often muddy, but glowing.

It has been a busy year for the West End Playgroup Committee so far. With a sociable parent community, the committee hosts regular events throughout the year including quiz nights, bake sales and seasonal parties for the children. This year's spooky Hallowe'en party was a sell-out event with face painting, music and games. Some of our more creative mums ran a crafting table where children could make creepy decorations and masks to take home. A number of parents were even roped into being mummified with toilet roll by the children – all good sports!

Another fundraising event, the recent Valentine's Day bake sale, was a tremendous success and particularly popular with the little ones who delighted in the homemade sticky treats. Upcoming events include a Quiz & Curry night as well as a new starters' Coffee Morning in early March.

West End Playgroup is accepting applications for next September. If you would like to contact West End Playgroup, please email us at [juliesimmonds2003@yahoo.co.uk](mailto:juliesimmonds2003@yahoo.co.uk) or call us on 01372 469157.

*Eliza Gaunt*



## PHOTOGRAPHIC CORNER

A very unusual sight these days—a Nightingale singing in the trees, not in West End, but in the Dordogne! Well done Don for snapping this beautiful songbird.

*Photograph: Don Tyzack*

### WEST END RESIDENTS' ASSOCIATION

#### ANNUAL GENERAL MEETING

**FRIDAY 1st MAY AT 7.30pm**

#### WEST END VILLAGE HALL

**Please come and join us for the meeting**

It's been a fairly quiet time for WERA in the last couple of months, however we have had a number of meetings with those at the Princess Alice in order to try to find a way to resolve the constant parking issues. At the last meeting there were some very positive ideas regarding the current car park by the recreation ground, but as ever things are more complicated than first appeared so we are still a long way off from a solution. We will continue to work on a way forward and hope to be able to update the village at the next AGM.

This year's meeting will be on 1<sup>st</sup> May at 7.30pm in the Village Hall. As always all are welcome. We will publish an agenda nearer the time but as well as the usual parking issues it is an opportunity to raise any issue affecting you in the village, so please come along – the more the merrier!

*Susannah Bramley  
Chairman*



### VILLAGE OUTING SUNDAY 24<sup>th</sup> MAY 2015

Make a note in your diary now. All welcome. Organised by Ken Berry, this will follow the format of earlier outings – champagne reception at the Social Club before departing by coach for a jolly day out.

In the past we have enjoyed narrow boat trips, a steam railway journey and visits to Windsor and Tunbridge Wells. This year we are still in the planning stage but we may be going to Marlow and Henley with a boat trip between.

Numbers will be limited so register your interest now.

Contact Ken on 07973 283695 or  
[kenberry\\_wizard@hotmail.com](mailto:kenberry_wizard@hotmail.com)

### WEST END BRIDGE CLUB by Pat Baumann

The Club's Christmas Party was enjoyed by members on 16th December. A presentation of a Sainsbury's gift voucher was made to Kay Moulton on behalf of all the Bridge members for her loyalty to the Club throughout the year.

Many members played at Cobham Village Hall on Tuesday 19th February to raise funds for Cancer Research, members included Rachel Day, Joyce Kidwell, Yvonne Ronaldson and myself.

The Club's Annual General meeting will be held on 3rd March.

Some members will be attending the Queen Elizabeth Foundation at Dorin Court for the Disabled on 27th March for a Bridge Tea. Cost £28 per table.

A Charity Bridge Drive will be held on 12 May at 2pm. Cost per table £28.

The Club meets every Tuesday at West End Village Hall at 1.45-4.45pm during Spring time. Chicago is played on the first Tuesday of the month. Please do come along you will receive a very warm welcome and a bridge partner will be found for you.

### WEST END VILLAGE HALL PLEASE DO COME AND JOIN US FOR OUR ANNUAL GENERAL MEETING ON TUESDAY 12 MAY 2015 8.00pm



Whatever your needs, from Wedding Receptions to committee meetings, this is a first class venue for all. The Hall is attracting more bookings since its refurbishment and boasts superb kitchen facilities and pleasant surroundings.

To avoid disappointment we suggest early booking with

**Kay Moulton on 01372 464775**

## WINTERDOWN WI

The Christmas meeting held at the beginning of December was much enjoyed by members. The Committee provided a ploughman's supper with mulled wine and mince pies and Joy Osborne entertained us with her keyboard, playing a selection of music and Christmas carols.

The Committee ran a toy stall at Cedar Club WI's Christmas market in Cobham. They made a small profit which goes into the funds and everyone who took part enjoyed the morning.

In January Becky Harris-Jones gave a very interesting talk about the amazing life of the Bumble Bee. There are 250 species world-wide, 23 of which can be found in the UK. She explained how we can all help them by planting Bee friendly flowers and even providing nesting sites.

To beat the 'Winter Blues', 17 members spent an enjoyable evening at Côte in Esher.

There is a full programme of speakers for the coming year along with the monthly Craft Group, which has become very popular, monthly Walks and Book Group meetings.

A Bridge Tea will be held on Wednesday 1st April at 2pm. £28 per table. (To book a table please contact Suzanne Hood on 01372 464038).



*Above left: The Committee at the Christmas meeting.  
Above: Father Christmas (Micki Scales) with her elf helper (Ann Tennant)*



*Members enjoying an afternoon at the craft group.*

### Forthcoming talks:

March 5th – Rosemary Swinfield – “The Fashionable Face of the Restoration”.

April 2nd – Marsha Hall – “Bespoke Shoemaker”.

May 7th - Peter Thompson – “You the Jury”

All Talks commence at 8pm

**Winterdown WI** meet on the first Thursday of the month at 8.00 pm in West End Village Hall, West End Lane. Visitors and new members are made very welcome. If you would like to join the largest voluntary women's organisation in the UK contact Secretary, Ann Tennant on 01372 466725 or visit our website: [www.winterdownwi.co.uk](http://www.winterdownwi.co.uk)

*Caroline Thyer*

*Photographs: Caroline Thyer & Micki Scales*

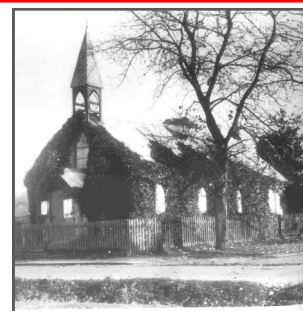
## ST GEORGE'S CHURCH, WEST END

**For Easter Services please contact  
Melanie Williams, Parish Administrator  
Parish Office**

**on 01372 462282 or email: [christchurch@esher.org](mailto:christchurch@esher.org)**

**Rector: Revd Dr Stefan Collier  
[rector.esher@gmail.com](mailto:rector.esher@gmail.com)**

**Website: <http://www.esher.org>**



*St George's Church c. 1879*



## NEWS FROM THE COUNTRYSIDE TEAM

West End's Famous Plant is Back...



This flower is one of the Starfruit (*Damasium alisma*) plants found in Halfpenny Pond in 2014, the first time for several years this plant has appeared here. The Countryside Team had de-silted Halfpenny Pond the previous autumn and this active management has led directly to the Starfruit's reappearance. There were 13 plants found. The Starfruit is one of the UK's rarest plants; in 2014 it was found at only one other site. Indeed there are now less than 100 sites for this plant worldwide, so to have it at West End indicates just how important our local Commons and countryside sites are for wildlife.

Other large projects undertaken by the Countryside Team in the last year have been at Ash Pond and Lardy Pond, plus the restoration of a 'lost' pond at the end of Winterdown Road (right) already frequented by the West End Kingfishers!



While on the subject of birds, we have seen

Buzzard and Red Kite regularly in 2014 and they look set to become a permanent feature of our avian fauna.

Our colleagues the Lower Mole Countryside Management Project spent a week restoring a further section of the Rifle Range footpath during the summer, having completed further works to the Ledges boardwalks down by the River Mole. The weather has been generally wet the last few years and this has had a negative effect on many of the paths surfaces. We are limited in resources so it may take a while to restore all the damaged areas, especially if the wet winters continue.

I am in the early stages of planning some future woodland thinning works on West End Common. This work will benefit wildlife and amenity by thinning the densely spaced trees out, allowing more light in and encouraging new growth.

*Dave Page, Countryside Estates Officer, Elmbridge Borough Council. Email: [dpag@elmbridge.gov.uk](mailto:dpag@elmbridge.gov.uk)*

## BUTTONS & BOW

Do you sit looking out of your window or in front of the TV?  
Wondering what to do?

Well,

**"Buttons & Bow Afternoon Club"**

For the over 60s could offer you just what you need!  
Friendship, company and the opportunity to have a purpose  
in going out.

We meet on Monday afternoons in West End Village Club  
Between 2.00 and 4.15pm

We provide speakers, entertainment, quizzes, outings, theatre  
visits and holidays.

We have a great year planned in which you could join in.

The Club has several gentlemen in the group now and lots of  
lovely ladies! So why not pop in and meet us and get to know  
us over a nice cup of tea. Last year finished with a Carol  
Service in St. George's Church, West End, conducted by Revd  
Dr Stefan Collier, a Christmas Party with "Father Christmas"  
popping in and, of course, we couldn't leave 2014 without  
going to see "Aladdin" at Woking Theatre.



Rye

Plans are being arranged for 2015 to visit places of interest  
such as The Houses of Parliament, a cruise on the Solent and  
Hamble Rivers, a day in Hastings and Rye and a day at East-  
bourne for the famous Air Show.

If you would like to find out more give Betty a call on  
01372 465937.

May this be the best resolution you will have made in 2015!

*Betty Bowpitt*





It's time to relax! Try...

**reflexology**  
and indian head massage

**Indian Head Massage** increases circulation & promotes relaxation in the areas most vulnerable to tension - head, neck & shoulders which may help with headaches, sinus congestion & eye strain.

**Reflexology** focuses on pressure points in the feet relieving stress in the whole body & restoring a healthy balance - beneficial for all ages & for a relaxed, mother & baby during pregnancy.

Combine these therapies to give a luxurious top to toe treatment!

**Price list:**

Reflexology	60min	£45
<b>NEW</b> - Ask about hot stone reflexology!		
Indian Head Massage	30min	£35
Both Therapies	75min	£60

**£10 OFF all treatments for Mothers Day!**  
Gift Voucher's make a lovely surprise for your mum

**Pamela Diamond · MAR · SRN · ITEC**  
T. 01372 465327 · M. 07747 033309 | E. [pdiamondreflexology@hotmail.com](mailto:pdiamondreflexology@hotmail.com)  
A. Sandown sports club, More Lane, Esher, KT10 8AN  
Visit our new website for further info [www.diamondreflexology-esher.com](http://www.diamondreflexology-esher.com)



## LE CERCLE FRANCAIS D'ESHER!

COME AND LISTEN TO TALKS IN FRENCH IN THE VILLAGE HALL!

Talks in French on French life, history, culture and language in the Village Hall on the third Wednesday of every month (the second Wednesday in December) from October to June. £5 per talk.

There are also opportunities to improve your French by taking part in French language workshops.

For further information or a copy of our programme please contact:

The dates and subjects of this year's talks are:

\*8.15pm on Wednesday 18 March-  
RAVEL ET SES SOURCES D'INSPIRATION LITTÉRAIRES

\*8.15 on Wednesday 15 April-  
ÉDOUARD MANET, ENTRE CLASSICISME ET MODERNITÉ

\*8.15 on Wednesday 20 May-  
LUANG PRABANG, CITÉ ROYALE DU LAOS,  
L'INDOCHINE FRANCAISE

\*8.15 On Wednesday 17 June-  
LE TOUR DE FRANCE EN CHANSONS

DO COME AND JOIN US. The price is only £5 per talk or £30 for the whole season.

For further information please contact Cavan Taylor on 01932 864258 or [cavan.taylor@btopenworld.com](mailto:cavan.taylor@btopenworld.com) or Brigitte Tiller on 01932 860842 or [brigitte@ptiller.com](mailto:brigitte@ptiller.com) or visit our website.



Above: This photo-montage was created by Don Tyzak. He started with a picture of the cricketers on the village green removed the original cricketers and superimposed an image from a painting of people playing pétanque. He also added the flags—so clever, isn't computer software wonderful!



Le Cercle Francais members enjoying a gathering.

## HOME COOKING BY ELIZABETH



*The Showroom at Great Bookham*

After celebrating our first year at our Catering Showroom in Great Bookham, we are overwhelmed by its success and the interest we have received from all parts of Surrey, it is a fairly unique experience, where Clients visit us, seeing China, Cutlery, Linen and Glassware as well as our Catering Portfolio which shows our many photographs of different food and recent events; as well as the many lovely testimonials we have received. Clients can not only just pop in but almost make personal appointments that can be made around people's very busy schedules, to see me and organise tastings. Entering the world of Home Cooking By Elizabeth bring food and people together. Office Number 01372 453206



BESPOKE CATERERS OF FORMAL OR INFORMAL EVENTS  
**ELIZABETH TRELIVING**

- \* WEDDINGS
- \* CELEBRATION PARTIES
- \* CORPORATE EVENTS
- \* DISHES AND PLATTERS TO ORDER FOR DELIVERY OR COLLECTION \*
- \* MEMORIALS
- \* CHRISTENINGS
- \* SMALL PRIVATE FUNCTIONS



The Showroom • 197 Lower Rd • Great Bookham • Surrey KT23 4DG

T: 01372 453206 • M: 07712 760175 • E: [ejtreliving@aol.com](mailto:ejtreliving@aol.com)

Or visit our site at [www.homecookingdirect.co.uk](http://www.homecookingdirect.co.uk)

## ITEMS FOR SALE

### Having a clear out for Spring?

If you have any items you wish to sell, you can advertise at very reasonable rates in the Village News.

Please contact: [angela.stockbridge4751@o2.co.uk](mailto:angela.stockbridge4751@o2.co.uk)  
Tel. 01372 460703

## OUR VILLAGE A PORTRAIT OF WEST END

Written by the late George Thirtle  
Edited, designed, typeset and produced by  
the late Charles Pocklington & Eileen Pocklington  
The book was sponsored by  
Roy Thompson Memorial Fund  
Garson Farm  
West End Sports & Flower Show

This wonderful written history of West End began in April 1975 with an exhibition of photographic prints showing aspects of West End village life through the years. Activities were organised each day throughout the week to celebrate the re-opening of the Village Hall after its conversion and restoration in 1975. The photographs created so much interest and comment that the villagers searched their family albums and more and more old photographs came to light! As one of it's oldest residents, in 1997 George Thirtle, was eventually encouraged to give a talk in the Village Hall on the history of West End to a packed hall, and hence the book was created!



*A teacher and some of her pupils pose outside the  
Village School c.1900*

The Village Hall was originally a Church of England School built in the same year as St. George's Church out of funds provided by Mrs Bailey. There is a commemoration plaque on the outside wall.



*The rear of the Village School taken in the 1950s*

Like the church, it was on common land and Queen Victoria's permission had to be sought. It was granted on the condition that a religious service was held here at least once a week. The school was converted into a Village Hall in 1970. Copies of the book are available from Eileen Pocklington on 01372 464061.

## SURREY POLICE

**IMPORTANT PLEASE READ.....**

Call so let's make sure we get there safely.  
Call 999 for Emergencies only.

Call 0800 555111 for Crimestoppers.

**Call 101 - Surrey Police for General Enquiries and non-urgent matters.**

This number will also transfer you to Esher Police Station, which is open from

**09.00-17.00 hours** Monday to Friday.



### Beat Officers:

**PC Danny Bond, FIN3682**

email: [elmbidgesnt@surrey.pnn.police.uk](mailto:elmbidgesnt@surrey.pnn.police.uk)

**Our new PCSO 13867 Nigel Oates** has joined the team from Thames Ditton.

Crime Reduction Adviser is

**Elaine Burtenshaw** 14613 Tel: 101 :

email: [burtenshaw14613@surrey.pnn.police.uk](mailto:burtenshaw14613@surrey.pnn.police.uk)

**Debbie Smith FIN: 13330**

Neighbourhood Team Coordinator, Surrey Police,  
Elmbridge Borough : Tel: 101 Extension: 38857

### **Important Police Report:**

Crime levels are quite low. However, in Esher we have had a couple of high value vehicles stolen from driveways in recent weeks, namely a Range Rover and an Audi.

I would ask owners to ensure that they lock vehicles on their driveways and DO NOT leave keys visible through windows and letterboxes.

Secondly, it's that time of year when more people are beginning to return to taking walks on the commons. If you drive to these locations please DO NOT leave handbags and other valuables on show or even under car seats.....they will be seen!!! Also do not get out of your vehicle at the locations and place your valuables in the boot....someone may be watching. Place the items, if you have to bring them, in the boot before you set off on your journey.

**PC Danny Bond FIN3682**

## Dean Turner Handy Man Services

*For all those jobs you dread inside and out*

Tel: 01932 590125

Mob: 07914 379428

Email:

[deanturnerhandyman@hotmail.com](mailto:deanturnerhandyman@hotmail.com)

CRB Checked

**Bridge Lodge, Convent Lane,  
Burwood Park, Cobham,  
KT11 1HD**





# Claremont Fan Court School

An independent co-educational school for pupils aged 2½ to 18 years

## Come and visit us

Prospective families are very welcome to visit us.

For further information please telephone  
**01372 473624** or email **info@claremont.surrey.sch.uk**



[www.claremont-school.co.uk](http://www.claremont-school.co.uk)



**Wheatley**  
SONS LIMITED  
BUILDING CONTRACTORS

25A ANDSON ROAD, EAST MOLESEY, SURREY KT8 9DQ  
TELEPHONE: 020 8979 5762 FACSIMILE: 020 8941 7388

**Wheatley & Sons Limited**  
Established 1850

ESTABLISHED 1850. Telephone - 173 P.O. KINGSTON.

BRIDGE ROAD, EAST MOLESEY,  
and HIGH STREET, ESHER.

**WHEATLEY & SONS,**  
(Successors to J. Wheatley & Sons, Ltd.)

**Builders, Contractors,  
& House Decorators.**

GAS, HOT WATER and SANITARY ENGINEERS,  
PLUMBERS, GLAZIERS, and BELL HANGERS.

Jobbing Work of every description with Bricklayers, Plasterers,  
Carpenters, Cabinet Makers, Painters, Paperhangers, Glaziers,  
Gilders, Plumbers, Gas and Bellfitters, Tinman, Smiths, &c.

Carpets taken up, Beaten and Relaid. Stoves and  
Ranges Supplied and Set. Boilers Cleaned. Kitchen  
Utensils Retinned.

HOUSE DRAINAGE & VENTILATION A SPECIALITY.  
DRAIN TESTS AND REPORTS.

PLANS prepared and advice given upon all matters  
connected with New Buildings, Additions, Alterations  
and Repairs.

FUNERALS FURNISHED in best style and conducted  
to any part of the country. Cremations arranged.  
Monuments, Brasses, Memorial Windows &c.

HOUSE & ESTATE AGENTS. FIRE & LIFE ASSURANCE.  
RENTS COLLECTED. VALUATIONS FOR ALL PURPOSES.

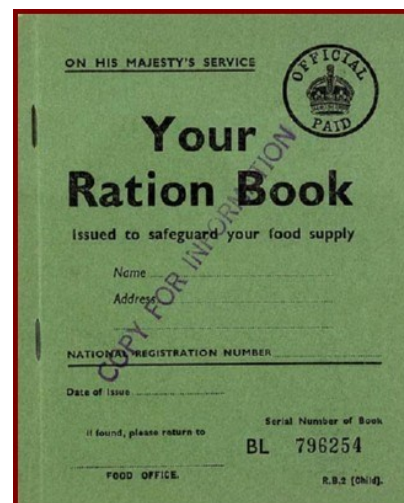


## WEST END ESHER WI

The WI has had successful and enjoyable meetings in the last few months. The AGM was held in November, which was preceded by a fish and chip lunch. After the business part of the afternoon meeting a member, Sheila Wilson, entertained us with an account of her travels. As a young woman she wanted to see the world, so she emigrated to Canada arriving in Montreal. From there she headed to Toronto where she worked at a variety of jobs. Sheila also visited many other places including: New York, New Brunswick, Nova Scotia and Prince Edward Island. From Canada she went to the Bahamas, Australia and New Zealand. Finally she headed home via India and Egypt, arriving in the UK five years after setting off for adventure. Although travelling around the world is undertaken by a lot of young people these days it certainly was impressive in the 1950s! Towards the end of November most of our members were able to enjoy a Christmas lunch at the Prince of Wales in West End, Esher.

A successful Tombola stall was held in Cobham at the beginning of December. At the December meeting everyone enjoyed a Christmas tea accompanied by Christmas music and a lot of chat. Members returned home with a Christmas card and present.

In January a most interesting and, for many of us, a nostalgic talk was given by Gill Harris entitled "Food Rationing". Gill reminded us that mothers had to manage on a limit of 2oz each of butter, margarine, cheese and tea per person per week, showing us the size of the butter ration. We all had ration books which included a certain number of points which could be exchanged for items such as tinned food and biscuits. Our mothers had to make these meagre amounts stretch to feeding their families. Many people rented allotments where they grew vegetables and planted fruit bushes to supplement the rations. As well as being a very interesting talk, it was a very salutary lesson on not wasting food! We ended the afternoon with tea, biscuits (thankfully not rationed!) and a delicious wartime recipe cake kindly made by the speaker.



The Ration Book issued on His Majesty's Service during WWII.

Janet Colley

## VILLAGE NEWS © 2004

PLEASE MAKE A DIARY NOTE—THE COPY DATE FOR THE SUMMER 2015 EDITION IS FRIDAY 26 June 2015

Anyone wishing to place an article or advertisement in the Village News should contact Angela Stockbridge on 01372 460703 or 07817 498531 - Email: [angela.stockbridge4751@o2.co.uk](mailto:angela.stockbridge4751@o2.co.uk); **To avoid disappointment, please do try and get your articles in on time.**

Village News is provided through the generosity of the committees of the West End Village Hall, the Sports and Social Club, The West End Flower Show Committee, the West End (Afternoon) WI, Winterdown WI, advertising and generous donations. Printed by Impress Print, Hersham.

Please look at websites: [www.AFCWESTEND.org](http://www.AFCWESTEND.org) and [www.westendgirl.org](http://www.westendgirl.org) - where you will find the latest copy of the Village News and photographs of events in West End in the Photo Gallery, as well as links to other organisations in the village.





**Garsons**  
Growing since 1871

**Summer Opening Hours  
from Monday 30<sup>th</sup> March**

Monday - Saturday | 9am - 6pm  
Sundays | 11am - 5pm  
(Garden Centre open for viewing  
from 10:30am on Sundays)

Don't forget to  
follow us online for Garsons News,  
Events, Competitions and Offers!

Follow us on Facebook  
Garsons-Esher

Follow us on Twitter  
@Garsons\_Esher

or visit us at..  
[www.garsons.co.uk](http://www.garsons.co.uk)

GARDEN CENTRE 01372 460181 FARM SHOP 01372 464778 POOLCLEAN 01372 465531

**Free Parking!**

# Brodie & Hickin Landscapes

Est. 1980

- Patios • Driveways • Brickwork • Fencing • Ponds • Turfing
- Decking • Pergolas • Tree Surgery • Planting Schemes

Urban Gardens to Large Estates - Fully Qualified Team - Fully Insured

We pride ourselves on being Reliable, Friendly & Efficient

Please call for a FREE estimate

**Phone: 020 8398 5000**

[www.bhlandscapes.co.uk](http://www.bhlandscapes.co.uk) • Email: [info@bhlandscapes.co.uk](mailto:info@bhlandscapes.co.uk)  
64 Couchmore Avenue, Esher, Surrey KT10 9AU



**ETERNA**  
Pioneers in Watchmaking  
Since 1856

Newbould & Sons  
1 Church Street  
Esher Surrey  
KT10 8QS  
Tel : 01372 465574  
Web :  
[www.jrnewbouldandsons.co.uk](http://www.jrnewbouldandsons.co.uk)



## Esher Chiropody & Podiatry Practice

Put your soles  
in our hands

We provide treatment for...

- Cracked Heels
- Verrucae
- Cryosurgery
- Vascular Assessment
- Heel pain
- Calluses
- Corns
- Athletes foot

Call us on **01372 466 877** or visit us at  
**13 Church Street, Esher, KT10 8QS**  
to book an appointment





**West End Playgroup  
& Forest School.**

For children from 2 to 5 years

[www.westendplaygroup.org.uk](http://www.westendplaygroup.org.uk)

Tel: 01372 469157