



VILLAGE NEWS

WEST END

Volume 15 Issue 1
SPRING 2018

Enjoy being part of the local community?
Like socialising with like-minded people?
Want to give something back?



If the answer to these questions is yes, then you may want to consider joining Surrey Masons.

Like any other team, Surrey Masons get together to socialise, have fun and meet interesting people. However, the added benefit of being in our team is that we also focus on giving back to our local community and helping those in need.

It is not widely known that we support a number of local charities such as Shooting Star Chase children's hospice and buy air ambulances for Surrey, London and Yorkshire. We also work hard to improve the quality of life for those around us.

On a national scale we support forty old age homes and nineteen hospices, as well as providing leading-edge equipment to many hospitals. It's highly likely that someone close to you has unknowingly benefited for our charitable donations. Last year we raised £33M+ for charities in England and Wales alone.

To find out more, please contact
Phil Lewcock on 07776 227253
phil.lewcock1@gmail.com

SO HOW DO WE DO IT?

Amazingly all of this has been done while having a laugh and spending time with like-minded people – not a bad outcome!

We have an extensive range of activities including formal dinners and lunches, summer barbecues, quiz nights as well as weekends away both at home and abroad. Many of these are also open to partners and families in addition to the male-only events.

Here in Esher, we are all members of the West End Sports and Social Club and meet regularly in the village hall and cricket pavilion. Whatever your interest, you can guarantee that the 6000 members we have in Surrey will make you welcome.

If this has sparked your interest, why not contact us and try us out at one of our many dinners or socials? Find out for yourself if you would enjoy being part of our team. We look forward to meeting you!



WEST END RESIDENTS' ASSOCIATION PARKING IN WEST END LANE

Surrey County Council has concluded their latest review in respect of parking in the county and their decision in relation to the West End village affects West End Lane.

They intend marking double yellow lines on the west side of the lane between Lammas Lane and 18 West End Lane. In addition there will be additional double yellow lines on the east side of West End Lane.

This work will improve egress from properties on the east side, particularly Talbot Lodge and it will also improve traffic flow past the Hospice. However, it will mean the loss of approximately 25 parking spaces and will inevitably lead to much more congestion caused by parking in the centre of the village.

All of WERA's efforts to convince our ward councillors and Surrey CC have failed to convince either of these authorities that this will prove to be a retrograde step. Additionally, the Hospice have withdrawn their application to fund additional car parking on the Recreation Ground because of opposition from Elmbridge Planners.

An additional section of double yellow lining will be installed on West End Lane opposite the POW pond to improve visibility on this corner. The full details of all the work proposed by Surrey can be found on their site, 'Surrey CC parking news and updates in Elmbridge'.

Doug Fryer

TWO UNUSUAL SIGHTINGS ON THE GREEN 'MUSTMEETALADY' THE RUNAWAY RACE HORSE!

'Mustmeetlady' was being ridden by James King in an amateur riders' race at Sandown Park on Friday 8th December. Trained by Jonjo O'Neill, the gelding unseated his jockey at the first fence and continued for a circuit without his rider, before bursting through two sets of plastic running rails and the racecourse boundary, eventually finding



his way on to the road via the service road down the side of the course. The seven-year-old was caught on West End cricket pitch still donning his racing colours. One of the horse ambulances with a vet was rapidly dispatched in hot pursuit to pick him up. Mick and Caroline Pattenden of West End Lane reported: "the racehorse ran past our window.... we couldn't believe our eyes as it galloped down to the Church where he was stopped! Apparently this horse came out a week later and won a race!" And indeed he did, Mustmeetlady was unhurt following his adventure and went on to win his next race, a Handicap Chase on 16th December at Doncaster at 16/1!

THE UNICORN AND THE FAIRY

Another rare sight appeared on the village green one Friday in January. Caroline was walking her dog early one frosty sunlit morning when a horse box drew up and out stepped a unicorn!

What an ethereal experience seeing them come from the woodlands with the sunlight streaming in.

Photos: Mick and Caroline Pattenden



Garsons

Growing since 1871

GARDEN CENTRE | FARM SHOP | BUTCHERS | RESTAURANT



Garsons
Winterdown Rd
West End, Esher
Surrey
KT10 8LS

Garden Centre..... 01372 460181
Farm Shop..... 01372 464778
Restaurant..... 01372 460198
Bevans's Butchers.... 01372 460951

www.garsons.co.uk



LOCAL ARTIST'S SUCCESS

Congratulations to Jenelle Latcham, winner of the Village Christmas card competition, whose painting 'Pot with Magenta Door' has been selected for a national exhibition. It is the annual open national/international competition run by the Royal Watercolour Society, called the RWS Contemporary Watercolour Competition 2018.

The exhibition will be at Bankside Gallery next to Tate Modern from Friday 2nd to Wednesday 14th March. It could probably be viewed online during those dates too—try googling Bankside Gallery or the RWS. The painting was selected is just a small one, but a little gem.

www.jenellelatcham.com



SURREY POLICE

IMPORTANT PLEASE READ.....

Call 999 for Emergencies only.

Call 0800 555111 for Crimestoppers.

Call 101 - Surrey Police for General Enquiries and non-urgent matters.

This number will also transfer you to Esher Police Station, which is open from

09.00-17.00 hours Monday to Friday.

Sgt 2190 Greg Turner covers Esher

PCSO 13867 Nigel Oates covers West End

PC40489 Chris Smith is the local PC Tel: 101 or ext. 38298

14614 Mike Bessent is the contact for Neighbourhood Watch, Surrey Police, Elmbridge Borough :

Tel: 101 Extension: 38857

Officers can be contacted by dialling 101 or email:

Elmbridge@surrey.co.uk



IN THE KNOW SURREY AND SUSSEX/NEIGHBOURHOOD FRAUD ALERTS

- ◆ Reports of a male entering cafes and restaurants in the area, and while attempting to sell magazines to patrons he has distracted them, placed a magazine over phones/wallets on the tables, which have been subsequently stolen. Credit and bank cards have then been fraudulently used, shortly after the theft. Enquiries are ongoing to trace the suspect. The male suspect is described as: Arabic, thin build, late 20's, short dark goatee beard, baseball cap.
- ◆ Phantom Debt fraud. Action Fraud has recently experienced an increase in the number of calls to members of the public by fraudsters requesting payments for a "phantom" debt. The fraud involves being cold-called by someone purporting to be a debt collector, bailiff or other type of enforcement agent. The fraudster may claim to be working under instruction of a court, business or other body and suggest they are recovering funds for a non-existent debt. The fraudsters are requesting payment, sometimes by bank transfer and if refused, they threaten to visit homes or workplaces in order to recover the supposed debt that is owed. In some cases, the victim is also threatened with arrest. .
To learn more, please take a look at some of the helpful information and links on the Step Change Debt Charity website; <https://www.stepchange.org/debt-info/debt-collection/bailiffs-and-debt-collectors-differences.aspx>
- ◆ Flight Ticket Fraud – fraudsters are attempting to entice victims who are looking for cheap flights abroad.
- ◆ 'Ghost Broking' fraudsters pose as insurance companies selling policies to cover your vehicle but they are not real policies!
- ◆ There have been a number of burglaries recently in West End Gardens. Reports have also been received of overnight thefts from vehicles in the Esher area. At least one of these vehicles was insecure.

Please remove all valuables and lock your vehicles!



Local Mobile Foot Health Practitioner

Offering professional foot treatments in your home

Call Vicky Manship
MCFHP | MAFHP

T 020 8398 1977
M 07849 591 863

or email
dittonsfootcare@gmail.com

@DittonsFootcare

www.dittonsfootcare.co.uk

Registered Member of the British Association of Foot Health Professionals

Treatments for:

- Corns
- Hard skin
- Cracked heels
- Thickened nails
- Fungal nails
- Ingrown nails
- Athlete's foot
- Verrucae
- Diabetic feet
- Arthritic feet

West End Village Hall



Ideal for children's parties, meetings, functions and family occasions.
Adult parties strictly for Village Residents only by special arrangement.

TO BOOK

Visit: wevh.org

Mail: hirehall@wevh.org

WEST END VILLAGE HALL ANNUAL GENERAL MEETING

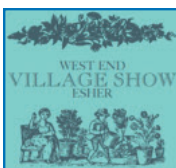
PLEASE MAKE A DIARY NOTE AND COME AND JOIN US ON

THURSDAY 24TH MAY 2018

8.00PM

IN THE VILLAGE HALL

ALL WELCOME



WEST END VILLAGE SHOW

It's never too early.....

Dear Residents

It might seem a little early to start thinking about this year's West End Village Show but the committee is already planning another bumper day of fun on Bank Holiday Saturday August 25th.

This year it would be great to see every house in our village make an entry into one of the many classes available in the marquee. There really is a class for everyone of any age to enter. Don't forget about entering your four-legged friend into the ever popular Dog Show.

We are always looking for new members to join the committee to help organise the Show or even just to help out on the day - maybe even to run your own stall...

Our next meeting will be held on Tuesday 13th March at 8.15pm in the function room above the Village Club.

Come along - we really are a friendly bunch!
Please email all enquiries and offers of help to

steve88kelly@gmail.com

P.S. please keep an eye on our Facebook page as well for all the news running up to Show day. Just type West End Village Show into the search bar on Facebook and follow us.

Steve Kelly, Chairman

BUTTONS & BOW CLUB (for the over 60s)



Wow! Here we are again, New Year, new members and full of forthcoming ideas, outings and holidays!

After our very successful charity coffee morning for Air Ambulance, we were invited to visit the Airbase in Kent to meet the crew and inspect the helicopter (above). Following an informative and interesting visit a wonderful meal was enjoyed in one of the oldest pubs close by, which made a fitting ending to a great day!

A full programme including celebrations for Easter, St. George's Day and, of course, the Royal Wedding. Our meetings, as usual, will include two interesting speakers a month, as well as our popular activities and monthly lunch out. The first holiday in Weymouth on a 'Mock Cruise' will be in March preceded by a day in Worthing.

If you are sitting at home on a Monday between 2.00pm and 4.30pm why not pop in for a cuppa with us and make some new friends. We meet in the West End Village Club in West End Lane, West End. We have a membership of 43 including six gentlemen. If you would like to find out more, contact me, Betty Bowpitt, on 01372 465937. *Photo: Rosie Master*

IN MEMORIAM

BAIRBRE MINIHAN-CRANE



Bairbre passed away peacefully on 27th November 2017.

Bairbre moved to West End in 1991 and was an active member of the community, involved in the Women's Institute and as a member of the flower show committee.

Bairbre established her private physio practice at home in Esher where she treated and became friends with many of you, and her larger than life laugh and "healing hands" will be remembered fondly.

West End was a very happy home for Bairbre, where she raised her family and enjoyed weekend walks. Bairbre was warm and generous, with an open door and she always found time for a chat. She was so loved and will be missed always.

Clio Dawkins and Francesca Crane



ESHER GREEN BAPTIST CHURCH

Matthew 28:6 - He is not here; he has risen, just as he said. Come and see the place where he lay.

Hi everyone,

Ryan here . . . fellow Westender, as well as Pastor of Esher Green Baptist Church.

So Easter is nearly upon us and it is a time when many ask the question, "Could Jesus really have risen from the dead?"

The Apostle Paul certainly didn't think so initially. However, later Paul famously testifies about meeting the risen Jesus himself while on the road to Damascus. This led to a remarkable turnaround in Paul's life from being fervently opposed to Jesus and the early church, to one of its greatest champions. It would be something akin these days to someone like atheist Richard Dawkins (author of *The God Delusion*) suddenly telling the world that Jesus Christ is the Son of God, and that nothing in life is of more importance!

No wonder Festus, Governor of Judea at the time, asked Paul if he was out of his mind! In fact Paul was not alone in having his life transformed by meeting Jesus. The Bible records how the other disciple's lives were similarly transformed. In fact people from all walks of life have experienced the same life changing encounter throughout every generation since.

An elderly man, who reported having never believed in God, commented "I am undecided, but I suppose I haven't got anything to lose by finding out more after all if it is true, it is indeed amazing".

So this Easter season, why not pop along to our very own St George's Church or venture out and join me at one of our services at Esher Green Baptist Church. What have you got to lose?

Warmest Easter Greetings to you all,

Ryan Ahern

Esher Green Baptist Church Services (6 Park Road, Esher, KT10 8NP)

Come and join us:

Sunday 25 March @ 10.30am

Palm Sunday Service

Thursday 29 March @ 7.30pm

Maundy Thursday Service (Reflective Communion Service)

Friday 30 March @ 10.30am

Good Friday Service (Reflective Communion Service)

Sunday 1 April @ 10.30am

Easter Sunday (All Age Celebration Service)



WEST END RESIDENTS' ASSOCIATION

The committee met in January to review progress on the engagement exercise we commenced in the Autumn regarding the future of WERA. In my last piece in the Village News I said we were looking to hear your views on what you thought the future focus of WERA should be and what you thought of providing an online community hub, but I am afraid we did not receive a single response. Committee members have therefore been proactively reaching out and have had conversations with key figures in the community which has resulted in some interesting ideas regarding WERA's role. These include

- More visibility and transparency such as publishing committee meeting minutes and liaison with the West End Conservation group on planning issues.
- There was also a view that WERA was no longer required as many of the issues dealt with could be picked up by the Esher Residents Association.
- A further view was that amenity issues should be the responsibility of the residents and local businesses with no need for WERA to become heavily involved.
- That the WESSC website could be expanded to include a WERA page.
- A focus on more collaboration with other existing groups in the village

Much of the work that the Committee undertakes involves extensively researching solutions to local issues or views on planning applications, and engaging with wider parties in the community such as local businesses, Highways and the Council. Most notably, the committee have put a huge amount of time and effort into planning and highway issues but sadly it is clear that our ability to influence has been very limited as decision makers are increasingly under pressure from lack of funding or resources and requirements to meet external targets such as housing provision. Just this year, despite the huge amount of work we were tremendously disappointed that:

- Princess Alice Hospice chose to terminate discussions on increasing parking provision on the recreation ground and will instead take no action on parking problems
- Planning decisions have gone against the view of WERA and residents which has set a damaging precedent for the village
- Highways issues have been raised but not addressed by authorities

We as a committee recognise that we are fortunate to live in such a lovely village and that there are lots of organisations and groups that many people are involved in which add to the vibrancy we enjoy. However it has become clear that most people do not see the relevance of WERA at this time. We believe that continuing as we are is not viable due to external pressures affecting our ability to influence due to Council budget reductions and planning targets/precedents.

In addition three of our committee members (2 longstanding) have decided to resign their positions at the AGM in May. We, therefore, have a choice to make which I will summarise in the following two options:

- 1) We retire WERA until such a time that there is a wider community need for coordination or collaboration, for example a large scale planning application. WERA and the West End conservation group would then pick up Highway and Planning issues.
- 2) A reinvigorated WERA with new committee members who will take forward existing responsibilities whilst also forming new relationships / networks to address or challenge the change in local agendas and ensure WERA's voice is heard.

Proceeding with either option would require a vote from the floor at our forthcoming **AGM which is being held in the village hall on Friday 18th May at 7pm**. If the vote is for option 2 then this could only be enacted if sufficient people step forward to be on the committee. We are looking for three people to join the committee so if you are energised at the opportunity to get involved please do get in touch with me. My email address is mark.bisson@btinternet.com

I look forward to hearing your views at the AGM.

Mark Bisson, Acting Chair

VILLAGE NEWS 'THANK YOU'

The Village News team would like to thank Tony Johns for his generous donations to the Village News. Two very welcome anonymous donations were also received.

The team very much appreciates donations towards the cost of the production, printing and postage of the newsletter.

SURREY ARTISTS OPEN STUDIOS 2018 EXHIBITION

The exhibition starts on 2nd June for 2 weeks:

Saturday 2nd, Sunday 3rd, Friday 8th, Saturday 9th, Sunday 10th, Friday 15th, Saturday 16th and Sunday 17th June.

This annual Art Exhibition at Stable Studios, West End Lane, Esher has established itself in the heart of the community, noted for quality and diversity of many art forms over the years.



The exhibition has always enjoyed a great success and we hope this latest one will be just as good. We hope to please you all for your continued support.

This year we have four professional talented artists bringing you the fruits of their labour in their chosen field.

Rosalind Moysen will be displaying her latest amazing digital artworks along with various acrylics watercolour artworks and mixed media paintings.

Alexandra Dawes will be showing her unusual expressionist landscapes in oils and acrylics. Some fast and loose sketches as well as some abstract / expressionist wall art of particular interest to Interior Designers.

Janet Stanley creates unusual eclectic sculpted works finished in resin that look sensational in garden spaces as well as the interior settings you have in mind.

Roger Marsden has produced some incredibly beautifully crafted Objet d'art pieces that will entrance those who like quality and skill in the making.



We look forward to seeing you in June and discussing our work with you or whether you just wish to browse the galleries, may be commission a piece or just enjoy the eye candy. Children and dogs are welcome too.

Alexandra Dawes

ST GEORGE'S CHURCH WEST END

It seems such a long time ago now since we wrote about our Christmas services, but it was as vibrant and busy as ever. Christmas began earlier than usual at St George's on the afternoon of Saturday 2nd December, when we threw our doors open and welcomed the congregation to celebrate the decorating of our newly purchased Jesse Tree. It's a simple "tree" of illuminated branches on which our hand-made decorations (each relating to a biblical story) are added on each day of Advent. It was a brilliant family party to start the Advent season.

The Crib Service on Christmas Eve was as popular as ever with at least 100 people there. After listening to each reading, the children had to collect the appropriate figures to be placed in the crib. It all went remarkably smoothly until the tragic decapitation of a shepherd, following his untimely fall from a table onto the floor. Fortunately during the chaos no-one seemed to notice. He is now undergoing restoration and will be back again next year.

The Village Carol Concert followed and feedback from villagers was as good as ever. We are thankful that the entire village supports these two lovely events every year. Our grateful thanks also go to Keith Howell-Jones, our wonderful organist and the members of the Village Club.

The Eucharist on Christmas morning was joyful – and for the second year running we were joined by two young trained sopranos, who sitting at the back of the church sprang into beautiful descants and harmonies during our Carols. It was a completely uplifting start to Christmas Day. If they are reading this – thank you both, from us all.



The children with the Jesse Tree



The Church Calendar now moves us through Lent, Mothering Sunday, Palm Sunday and into Holy Week. Services for this period are as follows:

Sunday 11th March at 9am
MOTHERING SUNDAY
Sunday 25th March at 9am
PALM SUNDAY (clocks go FORWARD 1 hour!)

****This may be a joint service with Christ Church so please check for details on our website**

Sunday 1st April at 9am EASTER SUNDAY

We have a Sunday Eucharist every week at 9am EXCEPT on the 5th Sunday of the month.

You may notice some strenuous activity going on both inside and outside the church some time during March. It will be our annual Church Spring Clean and Gardening event. Don't hesitate to join us if you are feeling energetic – tea, coffee and biscuits are always available!

For more information about all our services (at both churches) please do visit our website: <http://www.esherparish.org.uk> Here you can find everything you might want to know about the Parish of Esher including Music on The Green. We put topical notices and a monthly events calendar on the fence outside the church – so please do stop and look to see what's going on as you pass by. In the meantime, if any of you, or someone you know, would appreciate a home visit or would like to receive home communion, please contact the Parish Office on 01372 462282.

Finally – thank you as always for your continued support and we wish you all a very Happy Easter.

Andrea Lindow and Bridget Williams

EMBER MANOR ARE A FRIENDLY BUNCH

I suppose most of us join Clubs to enjoy the company of the other members and over the years of our membership we forge life time friendships. Ember Manor is no different in that respect to any other Club, we meet together to enjoy each other's company and as you would with any of your friends, you pick them up when they are down and they do the same for you.



While Ember Manor is part of the larger family of Surrey Masons all those of us that live within striking distance of West End and attend meetings regularly in the Village Hall are members of the West End Sports and Social Club.

In this day and age the population is more mobile than it was in 1925 when a group of friends formed Ember Manor; just this last year two of our members transferred their allegiance to other Lodges in their new locality, which happened to be the Forest of Dean in one instance and North Wales in the other.

Yet another member, Bernard Boston who at one time served on the West End Flowers Show Committee, has moved up to Cheshire with his wife Dorothy to be near their son and daughter and their families. He was almost immediately invited to visit a local group of Cheshire Masons at a Lodge that was formed in 1821 and its meetings are designed to coincide with a full moon – there wasn't much street lighting in 1821. At Ember Manor we have welcomed members from other Lodges who have set up home in West End – the association is a wonderful vehicle for meeting your new neighbours.

While ladies are not members of our Lodge, there are Ladies' Lodges should they wish to join them, we do meet together as families at several social occasions during the year. Our partners, on average, outlive we males and we do keep in touch with the widows of our former members, this is the job of our Almoner whose role is to help and comfort those who are less able through age or sickness.

Surrey Masonry isn't the only source of my friendships but it has allowed me to meet with lots of others who I might not have otherwise have known, who were outside my normal circle of sporting or business contacts. In Ember Manor alone we have those who are or who have been senior firemen, a senior policeman, bankers, a chef, a surgeon, a tree surgeon, a timber specialist, a lecturer, a school teacher and even a horticulturist – an eclectic group of friends who enjoy each other's company and while doing that raise money for charitable causes.

As a Surrey Mason we are also invited to visit other friends' Lodges and become exposed to an even wider group of acquaintances – I have met some chaps with extraordinary lives, from the curator of a Military Museum who had an encyclopaedic knowledge of the holders of the Victoria Cross to a chap who was despatched to all parts of the world after disasters collecting body parts – I didn't dwell too long on his particular job! May be you would like to meet us some time, we would be delighted to meet you.

Derek Richardson

This pretty little Robin was spotted on Bookham Commons.

Photo: Don Tyzack



♠
♥
♦
♣

When you are looking for an extra trick to make your Contract, for many players the first port-of-call is the Finesse. 50-50 chance—if it comes off, great; if not, maybe you can scrape another trick somewhere. The only thing is, the chances aren't always 50-50, sometimes they are stacked against you.

| Bidding :- | South | West | North | East |
|------------|-------|----------|-------|------|
| | 1 ♥ | No Bid | 2 ♥ | 2 ♠ |
| | 4 ♥ | All pass | | |

♠ AQ43

North

Opening lead
From West (S)8

A square diagram with 'N' at the top, 'S' at the bottom, 'W' on the left, and 'E' on the right.

South
(S) 965

South as Declarer in 4 Hearts just saw a quick opportunity to gain an extra trick by finessing the Q(S) - and was magnetised by it. Without hesitation he played the Q(S). GLUG! East won the K(S), and carefully he played back the 2(S) - a Suit Preference Signal telling his partner he had another entry in the lower of the two suits other than Spades and Trumps. (If he had wanted a Diamond, he'd have played a high card.) West trumped the 2(S), and dutifully led back a Club to East's Ace of Clubs. Then East led another Spade and West trumped again. Poor South was one down before he'd even started.

South should have been a lot more WARY. The 8(S) looks suspiciously like a singleton. Remember East had overcalled 2(S), so he should have five spades to justify that overcall. Those 5 plus the 7 cards that South can see equals 12. Therefore the 8(S) is a singleton.

So South refuses the finesse. He bungs on the A(S), and quickly gets out Trumps. If he has A Q in Trumps, again he doesn't finesse but plays out Ace (H) first, then another trump so that he has a chance of using up his opponents' trumps before they get in their ruffs.

So be suspicious. Paul Mendelson, who writes in the Financial Times, puts it neatly... "The most usual explanation for an unexpected lead is that it is a singleton."

West End Bridge Club meets every Tuesday afternoon at the Village Hall. If you're thinking of joining our friendly club, it's Rubber Bridge with Chicago each first Tuesday in the month.

Please ring Kay Moulton for details on 01372 464775 for full details.



Clive Craigmile

Winterdown Report for the Village News February 2018
Following the business of the December meeting it was party time. As usual there was a wonderful array of food, all provided by the members. It seems that a speaker is not always required as social time is valued.

Before Christmas some members travelled to London to see 'An American in Paris' they had time also to see the Christmas lights. Brenda Finn organised the day and they had a lovely time.



Photo: Ann Tennant

The Walking Group has struggled this winter to find a reasonable day for walking. The weather seems to have been either very wet with gale force winds or else it has been freezing cold. It had been decided that, following a very enjoyable talk by Pieter Morpurgo about the restoration of the Diana Fountain and the Water Garden, a visit to Bushy Park was the very thing for the January walk. However the day dawned and not only was the rain coming down in relentless stair rods the wind was also gale force! A few of us were too fainthearted to go but three people did. They enjoyed their walk and although it was a bit windy they did not get wet. Perhaps the rest of us will be braver next time.

The Surrey Federation WI (SFWI) celebrates its Centenary this year and there are lots of festivities planned. Our WI is hoping to take part in some of them and we will be busy making cakes, helping out at events and even making a model insect pollinator to join the display at a picnic to be held at Wisley on the 28th of June. Our craft afternoons/tea and chat are thriving. Everyone enjoys Ann Tennant's wonderful hospitality and the opportunity to catch up with friends.

In February Michael Gilbert transported us back to 1951 with a talk entitled 'A tonic to the Nation' which was about the Festival of Britain. Some members remembered the period, others had been too young and some not even born! Michael's talk complete with pictures of the time provided us with a glimpse into post war Britain.



*View from
the Thames
of the Skylon
at the
Festival of
Britain
1951*

Coming up:

1st March – Living and working in the Middle East as a teacher
– Julie Beavan

5th April – Born into Aviation – Peter Bedford

3rd May – Resolutions and Fish and Chip supper

Winterdown WI meet on the first Thursday of the month at 8.00pm in West End Village Hall. Visitors are always very welcome. Contact: Secretary, Ann Tennant on 01372 466725

or visit our website: www.winterdownwi.co.uk

Caroline Thyer



ARE YOU INTERESTED IN FRENCH LANGUAGE, LIFE AND CULTURE?

If so, do come to West End Village Hall to listen to carefully selected speakers talking in French on a variety of topics.

Talks take place monthly from October to June on the third Wednesday of the month except December when it is the second Wednesday. They start at 8.00pm, last for an hour and are usually attended by 60/70 members of the Cercle and visitors whose ability in the French language varies from the fairly basic to the completely fluent.

*Relaxed and friendly atmosphere *Free coffee and biscuits from 7.00pm *Only £5 per talk or £30 for the whole season.

Opportunities to improve your French at language workshops.

For further information or our complete programme, please contact:

*Brigitte Tiller on 01932 860842 or brigitte@ptiller.com or

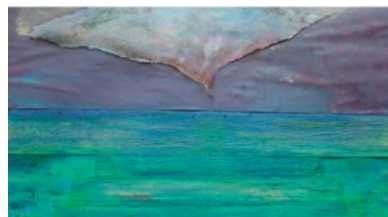
*Cavan Taylor on 01932 864258 or cavan.taylor@btopenworld.com or

*Visit our website:

www.dontyzack.care4free.net/cercle.html



Beginners Drawing and Watercolour class



Come to the Art Studio
in West End Lane
Esher

Every Tuesday night
7.15pm to 9.15pm

Wednesday daytime class and Wednesday evening class starts January 18 2018

Contact Lucinda (FE Tutor) on 07971 603876
about the 12 week course discount or pay £12
per session



Goosanders on Pennymead Lake



NEWBOULD & SONS

1 Church Street

Esher Surrey

KT10 8QS

Tel : 01372 465574

Web :

www.jrnewbouldandsons.co.uk



WEST END FILMS

West End Films screens foreign language, indie and black and white classic films from September to May.

Films are screened at West End Village Hall. Doors open at 7pm and all films start at 7.30pm. No need to pre-book a seat – just turn up on the night but please join our mailing list first. You are welcome to bring along your own drinks.

Membership costs £10 per season with no additional costs to pay. Members may bring a guest to a film for £5.

Our website gives dates and details of the current season, plus a summary of previous films that we have screened.

<http://www.westendfilms.co.uk>

Robin Crane westendfilms@btinternet.com

PHOTOGRAPHIC CORNER

THE SUPERMOON ('BLUE MOON') DAZZLES STARGAZERS



Don Tyzack took this spectacular photograph of the 'blue moon' shining over East Horsley as it graced the skies on 31st January 2018. It was photographed in many beautiful places around the world. This supermoon is cited to be extra special as it featured a total lunar eclipse from western North America across the Pacific to Eastern Asia. A full moon becomes a blue moon when it is the second full moon to appear within the same month. Blue moons happen every two and a half years on average. The moon doesn't actually change its colour to blue, but those in North America, Asia and

Australia may witness it turn red as it coincides with a lunar eclipse. The supermoons are the second and third in a trilogy that began on 3rd December. The December supermoon was a rare event for stargazers as a supermoon had not been seen since 14th November 2016.

Don also snapped the photograph of the Goosanders on Pennymead Lake.

Brodie & Hickin Landscapes

Est. 1980

- Patios • Driveways • Brickwork • Fencing • Ponds • Turfing
- Decking • Pergolas • Tree Surgery • Planting Schemes

Urban Gardens to Large Estates - Fully Qualified Team - Fully Insured

We pride ourselves on being Reliable, Friendly & Efficient

Please call for a FREE estimate



Phone: 020 8398 5000

www.bhlandscapes.co.uk • Email: info@bhlandscapes.co.uk
64 Couchmore Avenue, Esher, Surrey KT10 9AU

West End Village Hall West End Lane Esher



Every Tuesday at 7.00pm Shimmy and Shake the night away to this fun, high intensity 45 minute class. First class is free! Thereafter it's either £7.00 per class or £60.00 for a block of 10.

Please go to our Facebook page for further information

<https://www.facebook.com/corefitnesssurrey/>



West End Playgroup & Forest School.

For children from 2 to 5 years

www.westendplaygroup.org.uk

Tel: 01372 469157

After School Art class for children

Aged 8+ upwards
3.30pm to 5.00pm



Come to the art studio in West End Lane Esher
Starts Tuesday 3rd October

Every Tuesday

Contact Lucinda (FE Tutor) on 07971 603876
about the 10 week course discount or pay £9.00
per session

VILLAGE NEWS WEST END

*Please make a diary note of the
Summer and Autumn 2018 Edition
copy dates:*

Friday 6 July & 31st August

If you wish to advertise, send in an article or photographs for the Summer 2018 Edition please contact
Angela Stockbridge

Email: angelastockbridge1115@gmail.com

Tel: 07817 498531 or 01372 460703

The Village News is supported by local organisations including: the West End Village Club, The West End Summer Show Committee, Garsons, Winterdown WI, Richard Gale, Independent Advertisers and personal donations.

The newsletter is printed by Impress Print Services, Hersham and Garsons.



Bespoke Catering Of Formal & Informal Events



- WEDDINGS
- MEMORIALS
- CELEBRATION PARTIES
- CHRISTENINGS
- CORPORATE EVENTS
- HOUSE WARMING PARTIES
- THEMED PARTIES
- SMALL PRIVATE FUNCTIONS
- DISHES AND PLATTERS

ELIZABETH TRELIVING

HOME COOKING BY ELIZABETH

The Showroom 1 Church Road Great Bookham KT23 3PD

T: 01372 453206 M: 07712 760175 E: ejtreliving@aol.com

Or visit our website www.homecookingdirect.co.uk



Wheatley

OF SONS LIMITED
Established 1850

ESTABLISHED 1850 Telephone: 079 P.O. KINGSTON
BRIDGE ROAD, EAST MOLESEY,
and HIGH STREET, ESHER.
WHEATLEY & SONS,
(Successors to J. Wheatley & Sons, Ltd.)

**Builders, Contractors,
& House Decorators.**

GAS, HOT WATER and SANITARY ENGINEERS,
PLUMBERS, GLAZIERS, and BELL HANGERS.

Jobbing Work of every description with Bricklayers, Plasterers,
Carpenters, Cabinet Makers, Painters, Paperhangers, Glaziers,
Gilders, Plumbers, Gas and Bellfitters, Tinsmen, Smiths, &c.

Carpets taken up, Beaten and Relaid. Stoves and
Ranges Supplied and Set. Boilers Cleaned. Kitchen
Utensils Returned.

HOUSE DRAINAGE & VENTILATION A SPECIALITY.
DRAIN TESTS AND REPORTS.

PLANS prepared and advice given upon all matters
connected with New Buildings, Additions, Alterations
and Repairs.

FUNERALS FURNISHED in best style and conducted
to any part of the country. Cremations arranged.
Monuments, Brasses, Memorial Windows &c.

HOUSE & ESTATE AGENTS. FIRE & LIFE ASSURANCE.
RENTS COLLECTED. VALUATIONS FOR ALL PURPOSES.

NO JOB TOO SMALL

Telephone 020 8979 5762

Fax: 020 8941 7388

Email:

wheatley_sons@btconnect.com