



DEVASTATING FIRE AT QUEENS CLOSE, ESHER

A fire which ripped through the roof of the Tudor style apartments just after 2pm on 10th June, caused serious damage and left residents temporarily homeless. One person was rescued from the building but all were safe. Surrey Fire and Rescue Service drafted in 12 fire engines and poured enormous amounts of water on the building to extinguish the fire. Surrey Police were in attendance and a 100 metre cordon was set up to protect the public. Lammas Lane was closed in both directions for several days while investigations were carried out and these are still ongoing. Local residents were quick to help out with much needed food, clothes and accommodation. *Photo: Ashley Stockbridge*



INTRUDER IN THE PRINCE OF WALES POND!

The very amusing croc's head and NHS sign which mysteriously appeared one night created a lot of interest, but we still don't know who dunit?!



WEST END VILLAGE SHOW 2020



At the time of going to press, the sad decision has had to be made not to hold our usual traditional Village Show on the green due to the Coronavirus pandemic. However, depending on Government guidelines issued nearer the date, we would hope to be able to stage a 'scaled down' version of the Flower Show for the village on Saturday 29th August using the Village Hall and its environs which would, of course, be in accordance with social distancing and safety precautions as required. In years gone by, as many will know, there were two shows each year, the second of which was always held at the Village Hall displaying the produce of early autumn. We hope to emulate this in some small way. We will keep villagers informed over the coming weeks.

*Steve Kelly, Chairman
Photo: Angela Stockbridge*

Left: The aftermath of the fire at Queens Close
Below: Two lovely West End girls, Poppy and Ivy Houghton, "Clapping for Carers" with their wonderful painted Rainbow the symbol for the NHS and Key Workers. They also sent letters to neighbours together with homemade cupcakes—see their letter on page 5.

Photos: Angela Stockbridge

Below Left: The croc's head and the 'Thank You NHS' sign!

Photo: Ken Berry



NEW DEFIBRILLATOR FOR VILLAGE HALL



A new defibrillator is now located outside the Village Hall. The committee of the West End Village Show is proud to have initiated its purchase and has joined forces with the Village Hall in sponsoring this public facility.

Proceeds from the Village Show are donated annually to local charities and good causes and this is one of them. The continued support from residents of the village is much appreciated and this life-saving initiative is aimed at 'giving back to the community'.

To help someone who is in cardiac arrest effectively, a defibrillator needs to be found as quickly as possible, so the central and well-known location of the Village Hall was felt appropriate. No training is required - anyone can use it. Clear instructions are on the outside of the unit. It's just a matter of dialling 999, giving your location and you will be given a code to open the box. Defibrillators are also available at Garsons and at the Village Club during opening hours.

Steve Kelly, Chairman

IMPORTANT PLEASE READ.....

Call 999 for Emergencies only.

Call 0800 555111 for Crimestoppers.

Call 101 - Surrey Police for General Enquiries and non-urgent matters.

This number will also transfer you to Esher Police Station, which is open from

09.00-17.00 hours Monday to Friday.

Sgt 2190 Greg Turner covers Esher

PCSO 16888 Mey (Kat Mey) covers West End

PC40489 Chris Smith is the local PC Tel: 101 or ext. 38298
14614 Mike Bessent is the contact for Neighbourhood Watch,
Surrey Police, Elmbridge Borough :

Tel: 101 Extension: 38857

Officers can be contacted by dialling 101 or email:
the Elmbridge Policing Team at
elmbridge@surrey.pnn.police.uk

IN THE KNOW—Surrey & Sussex

- ◆ KEEP YOUR DOORS AND WINDOWS SECURELY LOCKED AT ALL TIMES AND ONCE AGAIN PLEASE REMOVE ALL VALUABLES FROM CARS WHEN PARKED.
- ◆ Please report suspicious incidents via 101, or in an emergency 999.

WEST END BRIDGE CLUB

The series of articles has been discontinued for the time being but will be resumed when the West End Bridge Club meets again.



Our friendly Bridge Club meets every Tuesday at 1.30pm at West End Village Hall.
Ring Kay Moulton on 01372 464775 for details.

Clive Craigmile

DEFIBRILLATOR

OUTSIDE VILLAGE HALL

No training required - anyone can use it

Dial 999 and give the location

You'll be given a key code to open the box

Follow written instructions on the portable unit

Verbal instructions are provided once turned on.

THE SURREY ARTISTS' OPEN STUDIO

The Surrey Artists Open Studio event, which was delayed due to Coronavirus, will be taking place at Rose Cottage Stables in West End Village. The local artists participating will be Roger Marsden, woodturner, Dawn Thornhill, paper cut artist, Beryl Hole, ceramicist, Janet Stanley, sculptress and painter, Keira Graham, Textiles Artist and Designer and Rosalind Moysen, painter.

We will be opening the stables, conservatory and garden at no charge to you to enjoy, browse or buy our work at Rose Cottage Stables, 46 West End Lane, KT10 8LA. Open between 11am and 5 pm Thursdays, Fridays, Saturdays and Sundays from Saturday 19th September to Sunday 4th October and subject to Government restrictions.

Rosalind Moysen



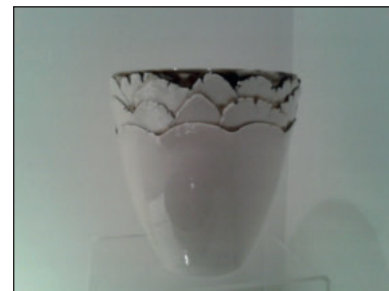
Untitled - Dawn Thornhill



The Allotment - Rosalind Moysen



Salad Bowl - Roger Marsden



Untitled - Beryl Hole



Sandstone - Keira Graham



Regeneration - Janet Stanley



Dorothy Beeson, the founder and leading light at The Swan Sanctuary passed away on the 1st May 2020. Dorothy was born on 6th July 1947. She founded The Swan Sanctuary in her back garden in the early 1980s after finding several 'fishing tackled' swans on the River Thames and discovered there was nowhere to go for help. So she decided she would help them.

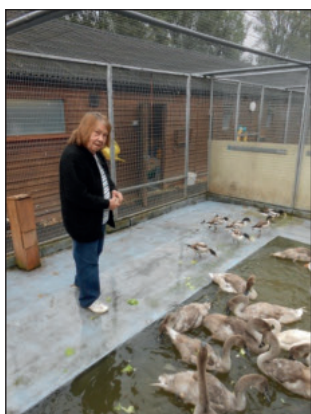
With little funding but dogged determination she sold her house and rented land in Egham for the first Sanctuary site. Over the years Dorothy, with the help from family and volunteers, built The Swan Sanctuary into a haven for sick and injured Swans and Waterfowl. In 1991 she was awarded the BEM for services to swan welfare and helped many vulnerable children at Egham through the youth justice system. This was followed when she was recognised with the Pride of Britain Award in 2001.

In 2005 The Swan Sanctuary moved to its permanent site in Shepperton where it has flourished ever since. Dot, as she was known, impressed most people she met because the patients came first and nothing was too good for them.

Dot was honoured again in 2015 when she was presented with the MBE by the Queen herself, although Dot was never keen on getting dressed up and leaving the Sanctuary, on this occasion she was happy to make the effort. Thanks to her efforts The Swan Sanctuary is now internationally recognised and her legacy will continue in the capable hands of her daughter and granddaughter as well as staff and the small army of volunteers who keep the organisation functioning.

Dorothy passed away peacefully at home with her family on 1st May 2020 and is sorely missed by us all.

Howard Smith, Trustee

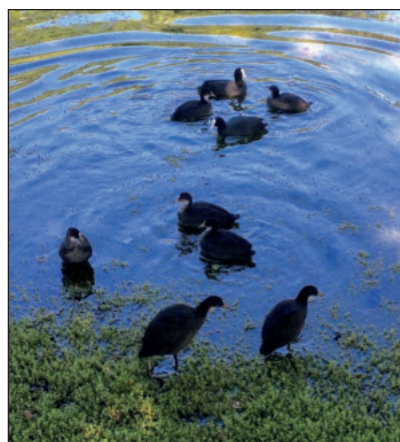


MEMORABLE DAYS GONE BY 'PLANT A TREE IN '73'

In 1973 all WIs in Surrey were asked to "Plant a Tree in '73" and we chose a Malus to be planted opposite No 35 Winterdown Road the home of Janet Thirtle (2nd from right) who was our champion jelly, jam and chutney producer. Others in photo are (left to right) Clare Craigmile, Nell Kendrick, Dorothy Nightingale, Hazel Hunter, Ann Woodgate and Betty Gulless (President at the time). *Ann Tennant. Secretary, Winterdown WI*



NEWS FROM OUR PONDS



Peter Bedford sent in these lovely images.

Above: A little girl looking at some tiny ducklings on the Prince of Wales pond and a family of Coots on Chequers pond - parents with 7 chicks—we haven't seen that many before!

Left: Cob and Pen with cygnets on the River Mole (raised near the Rec). We were also visited recently by a swan and two cygnets. Let's hope they return West End to nest again.

WEST END CREATIVE WRITING GROUP

A HOLIDAY FROM LOCKDOWN

by Mark Bisson

Holiday memories distant
Exploration of a different world
Yet I can see the sand
of Plemont bay
Feeling the warmth of the setting sun on my face
As we sit on Loggos harbour
Holidays a hope
A dream for the future
Now no vapour trails
Criss-cross the sky
The only planes
Signal repatriation
Our own returning home
Time to think, to consider, to reflect
To be grateful for waking each day
On my enforced staycation
Witnessing beauty around me
Birds singing, signalling spring
Sun rays warming the earth
Plants awakening from their slumber
Apple tree blossom resplendent
What purpose holidays?
Relaxation.
New experiences
Seeing new places
Since lockdown weirdly I am relaxed
Experiencing calm
Discovering new places
Close to home
And yet I seek escape
Drawn to far-away places already known
Where comfort beckons
But maybe now is holiday
In a new way
Healing the earth
Restoring and regenerating
Looking after ourselves
Caring for each other
And Earths ecosystem
Holidaying with a bigger purpose.
Many won't ever holiday again
Others fight to save lives
And keep us safe
To myself and you I say
Be grateful for the here and now
Be mindful how you live each day
And consider holidays a privilege
In our new normal
Not a given right

ACKNOWLEDGEMENT



The Village News team thanks the
West End Motor Club Members for their generous
donation to the Village News.

We also thank them for their continued support both in
providing both humorous and interesting articles about the
activities of the Motor Club.

It is thanks to such donations that it is possible to continue
producing the Village News and keeping local residents
informed of events in and around
West End.

CELEBRATING THE 75th ANNIVERSARY OF VE DAY on the 8th May to mark the surrender of Nazi Germany

Villagers make the most of a celebration dressing up, enjoying a tippie,
listening to 1940s music and decorating cottages during the lockdown.



Manager. Anna Carrier, with family and friends outside the Prince of Wales



Above: Pond View beautifully dressed
in colourful bunting and a rainbow
thanking the NHS workers .

Left: Ken Berry entertaining the 'troops'
with 1940s music.

Below: Peter Bedford's image of The
Chequers—dressed for VE Day.

All around the village residents
celebrated in style with a glass of bubbly,
soaking up the glorious sunshine and
atmosphere, whilst observing the
Government's 2 metre social distancing
rule.

The Red Arrows also marked the happy
occasion with a flypast over Buckingham
Palace.

*Photos: Peter Bedford
and Angela Stockbridge*



WINTERDOWN WI

Our last meeting was held in March which was just before we were plunged into the midst of this dreadful Covid-19 pandemic. We managed one last outing just before Lockdown when we visited The Grange Centre in Bookham for one of their truly delightful cream teas. The Grange became a Registered Care home in the 1980's to provide sheltered accommodation for people with disabilities. It was founded by Miss Julia Sweet as a charity School of Stitchery and Lace in Leicestershire in the 1920's and in 1938 the charity moved to Bookham. Miss Sweet founded the school to give nurses injured in the First World War a means of earning their living. The students earned a reputation for exquisite workmanship and royal commissions followed. Queen Mary became a Patron and had 12 nightdresses and a bedspread made. There is a small museum at the Grange dedicated to this early work and we spent some time there finding out about the history of the school.

After Lockdown the only means of communication with members had to be by email or telephone. I think most of us shied away from Social Media and Zoom parties. Marion our President has sent out a monthly newsletter to try and keep everyone in touch and some members became involved in sewing and knitting for charity. Bookham WI had asked for volunteers to make scrubs and knitted toys. Marion Ford made two sets of scrubs and along with Margaret Dollimore and Caroline Thyer made knitted masked gnomes for children in Surrey hospitals.

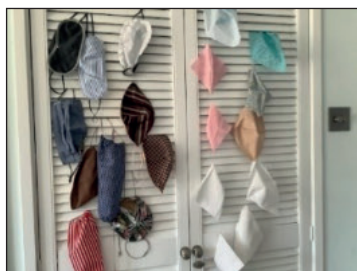


Scrubs modelled by Marion and one of the knitted gnomes.

Photos: Marion Ford and Margaret Dollimore

Ann Tennant settled down to make face masks but after making 50 masks she had run out of elastic and had to source new stock. At the last count the number had reached over a hundred masks. To date they have been distributed to friends, family and, now in great demand, to schools where the staff can wash them and leave at school for the next day.

Below: Masks and bags made by Margaret Dollimore



We have missed talks about Clandon Park, the Resolutions and VE Day Commemoration. Our June meeting this year would have been our 49th birthday meeting. Ann Tennant sent out a picture of our meeting in June 2017 where we dressed up for Derby day and celebrated with a strawberry themed buffet.



We are not sure when we will be able to resume our meetings but in the meantime we will continue to keep in touch with each other and hopefully we can soon return to more normal times where making scrubs and face masks will be a thing of the past.

We are always pleased to welcome new members. Do come and join us when we are able to start again. We usually meet at 8pm on the first Thursday in the month.



For more information contact: Secretary, Ann Tennant on 01372 466725 or visit our website: www.winterdownwi.co.uk

Caroline Thyer

HOME COOKING BY ELIZABETH FIVE YEARS ON


It is five years that we stopped running the Restaurant at Garsons. It has been a eventful time seeing our Catering Business grow even during a Pandemic. We are serving so many old and new clients in Surrey and Beyond. Our delivery service is going down extremely well. The most popular delivery is our High Clotted Cream Tea. It includes Cocktail Sandwich Selection, Two Scones, Jam, Clotted Cream, A sachet of Yorkshire Tea and Home Made Cake. Relatives from Australia to just down the road have ordered this as a Birthday, Anniversary Treat or just a simple surprise. Although I have held a personal license for over two decades, we are also now licensed to sell and deliver alcohol with or without food. Home Cooking by Elizabeth has now been working in five different decades and we look forward to our sixth which incorporates the next generation. It is certainly strange to think all those years ago we started in a tiny kitchen in Hersham. West End is very close to my heart and we have been a main sponsor for the West End Flower Show for many years and enjoy feeding the very well deserving judges and members of the committee. Personally West End has been a very important place, where my children and grandson have fed the swans, picnicked and picked fresh fruit & vegetables. We continue to serve you and wish you safety at this time.

Elizabeth Treliving

Bespoke Catering Of Formal & Informal Events

- WEDDINGS
- MEMORIALS
- CELEBRATION PARTIES
- CHRISTENINGS
- CORPORATE EVENTS
- HOUSE WARMING PARTIES
- THEMED PARTIES
- SMALL PRIVATE FUNCTIONS
- DISHES AND PLATTERS



ELIZABETH TRELIVING

HOME COOKING BY ELIZABETH

The Showroom 1 Church Road Great Bookham KT23 3PD

T: 01372 453206 M: 07712 760175 E: ejtreliving@aol.com

Or visit our website www.homecookingdirect.co.uk

VILLAGE NEWS WEST END

Please make a diary note of the copy dates for the next two editions

Autumn: Friday 4 September by 1pm

Christmas: Friday 14 November by 1pm

please contact Angela Stockbridge

Email:

angelastockbridge1115@gmail.com 07817 498531 or 01372 460703

The Village News is supported by local organisations including: the West End Village Club, West End Motor Club, The West End Village Show Committee, Garsons, Winterdown WI, Richard Gale, West End Village Hall Committee, The former West End Residents' Association, Advertisers and personal donations. The newsletter is printed by Impress Print Services of Hersham and Garsons. Please note the newsletter can also be found on the Garsons website www.garsons/Community Page and the www.AFC Westend website

WEST END PLAYGROUP

A child is holding a green card with five small floral arrangements attached. The arrangements are labeled: "Sweet Peas", "Sweet Peas", "Sweet Peas", "Sweet Peas", and "Sweet Peas". The child is wearing a striped shirt. The background is a brick wall.

Photos: Courtesy of the West End Playgroup.



THE PRINCE OF WALES REOPENS FOLLOWING EASING OF LOCKDOWN RULES



Photo: Angela Stockbridge



**CODE WORD
'WEST END AND MORE'**

[illegible]

TRY HERE ABOVE

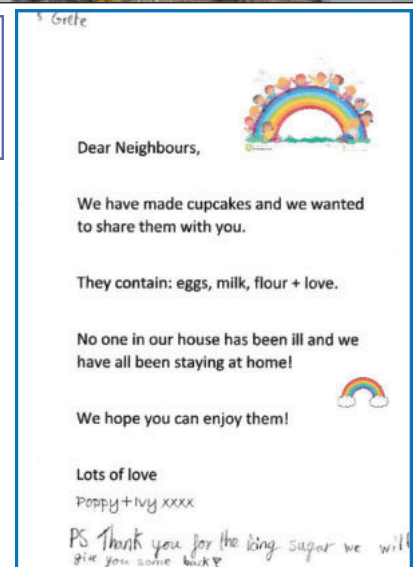
SCENES FROM THE DEADLY COVID-19 PANDEMIC LOCKDOWN
23rd March to 10th July — 11.9m confirmed cases and over 546k deaths have been recorded worldwide.

As soon as the lockdown was enforced by the Government—panic buying took place in earnest. Long queues formed and many food stores were left with empty shelves. All schools, clubs, pubs and non-essential shops were forced to close. Workers were furloughed and asked to work at home where possible or made redundant. All non-essential travel was halted and flights cancelled. The roads around Surrey were empty and eerie! As you can see here the Portsmouth Road and Esher High Street were deserted. Social distancing became the norm but people were allowed out to exercise. They exercised on the green and the daisy covered recreation ground, The local car parks were blocked by skips. Signs were erected advising the public to social distance 2 metres apart. Clapping for the NHS and other essential workers took place every Thursday evening at 8pm for 10 weeks. Many visitors flocked to West End to enjoy the sweltering sunshine and village green bringing picnics, tents and games. However, the amount of rubbish left behind by visitors was overflowing and scattered around the bins and green was disgraceful despite the 'do not litter' signs!

Photos: Angela Stockbridge



Below: 'This is a 2m garden'
Photo: Jackie Bisson



Above right:
 Poppy and Ivy's letter.

Right:
 Litter bin overflowing on the green.

Photo: Nik Wilkinson

A huge 'thankyou' to both Nik and Judy Wilkinson who were seen on many occasions collecting litter both on the green and deep in the woodlands.



WEST END VILLAGE HALL

As many of you will know, the Village Hall has been closed since the lockdown started in March. This has meant that we have had to postpone this year's AGM, which normally takes place in May. I would therefore like to take this opportunity to provide an update to you on the Village Hall.

The Coronavirus lockdown meant that along with everyone else, the Hall closed in March. This has put severe pressure on our finances. Our income ceased when we closed the Hall down in March, but most of our fixed costs have continued.

Thanks to good financial planning and management over the last 8 years we have built up a solid surplus of funds, and this will help us to absorb the costs and loss of income for this financial year. However, we will not be able to absorb these costs indefinitely.

I should add a heart-felt thanks to the Government for the Retail Hospitality and Leisure (RHL) Grant, which we received a few weeks ago. This equates to about 45% of our annual income, and it will have a very positive impact in helping us to maintain the Hall at the centre of Village life.

Over the last year we have undertaken a major project to refit the kitchen, which has been welcomed by our many users. The kitchen refit was largely funded by an Elmbridge Community Infrastructure grant of about £9500, and a donation from the Flower Show of nearly £3000.

We are currently in the process of redecorating the inside and outside of the Hall, although we are reviewing the extent of refurbishment work that we can undertake at the present time due to the dramatic impact of Coronavirus on current and future bookings.

Looking to the future, Village Halls were allowed to reopen on the 4th July, subject to complying with relevant requirements, and we are receiving regular updates on mitigation measures and risk assessments from Government agencies.

Our major user is the Playgroup. They use the Hall throughout the year during term times, and represent over 50% of our total bookings and income. We are working closely with the Playgroup to see how we can support them. They are planning to reopen in September.

Nearly all our other users have delayed rebooking, due to either social distancing or vulnerability issues. This could have a very serious impact on our income for the second half of this financial year. However, as mentioned above, we are hoping that we will be able to absorb a shortfall this year.

We have been in discussion with the Flower Show about a scaled-down Flower Show in the Village Hall. This will be subject to Government guidance, and the Flower Show will make a decision at the end of July and advise the Village via a mail drop.

I would like to thank the management committee for another year of hard work, this year under very challenging circumstances. Much work goes on behind the scenes to keep the Village Hall running, and this is all undertaken on a voluntary basis.

Our treasurer Paul Gibson has been very active over the last year, applying for the CIL grant that formed the major portion of the kitchen fund, applying for the Government RHL grant, and more recently, monitoring the ever-changing Government advice on reopening measures.

Di Gibson has spent much time on maintenance and repairs, and was very involved with the kitchen refit.

Lyda Archer has been dealing with hirers and bookings under challenging circumstances. We are fully committed to complying with all relevant guidance to ensure that the Hall is safe to use, and Lyda has been working closely with Paul and Di Gibson to compile the Coronavirus mitigation measures, risk assessment and terms and conditions that are essential requirements for reopening the Hall.

Finally, the Village Hall is very much at the centre of Village life, but we do need people to use the Hall if we are to survive this crisis. If you are thinking of hiring the Hall please visit our website <https://wevh.uk/> and we can send you our comprehensive pack of information and requirements.

Robin Crane, Chair

West End Village Hall



Ideal for children's parties, meetings,
functions and family occasions.
Adult parties strictly for Village
Residents only by special arrangement.

TO BOOK

Visit: wevh.org

Mail: hirehall@wevh.org



A Swan and two Cygnets visiting the Prince of Wales Pond
Photo: Peter Bedford



Nik and Judy Wilkinson sent in this image of their glorious Wisteria.

NEWS FROM WEST END COMMON SPRING 2020

I hope you all enjoyed the peace and quiet of the early lockdown period. The lack of planes and cars as background noise allowed so much more of the spring birdsong to be heard. If you took your daily exercise on the Common you will have experienced this first hand. It was like being in a rural area far from the town!

Blackcaps were numerous and enchanting with their songs, and were taking advantage of new cover as the undergrowth really gets going following the woodland thinning work of 2018. In fact there are lots of interesting new plants and flowers coming up, attended by all sorts of insects and invertebrates. A real gem on your doorstep.

We mended a large section of boardwalk on the Ledges once the team was back at work.

The annual task of removing Himalayan balsam is on track despite Covid working restrictions on the Countryside Team and we have eliminated it from the lower part of the Common. If this annual plant is not pulled before it flowers and seeds, it can 'ping' its seed up to 5 metres and can spread quickly. Once it dominates it kills all the native vegetation so although it is an attractive plant it has to go in order to protect the native flora.

On the village green the splendid crocodile which appeared on the pond I'm sure will be covered elsewhere in this publication. I hope it raised lots of money for the NHS and cheered me up whenever I passed.

Which leads on to littering and fly tipping: as the only worker patrolling during the early lockdown period I had to shift tonnes of fly tip from the skips we had placed across the entrances to car parks. It was really difficult to keep on top of but I was not going to let it hang around as an invitation to others to tip. Once lockdown eased we then had large crowds and a ridiculous amount of litter to deal with which understandably overwhelmed our contractors and they are still collecting huge daily amounts around the Borough. Luckily we have public spirited volunteers who have helped by collecting and gathering up the excess. I don't know who you all are but thank you for your efforts. If you see the contractors clearing the bins please give them a word of thanks because they are working hard believe me.

We even had to post notices to educate folk that litter should be taken home. I can't explain it but it is a combination of ignorance and entitlement that does not excuse their behaviour. Enough said!

If you have any questions about West End Common and its special wildlife please email me: dpag@elmbridge.gov.uk

Dave Page Countryside Estates Officer Elmbridge Borough Council

PHOTOGRAPHIC CORNER

The lockdown has encouraged many people to exercise by taking early morning walks through Esher Common and the woodlands.

Here are two beautiful images photographed en-route.



Left:

Early morning walk
Esher Common
Photo;
Nik Wilkinson

Right:

Early Morning
Chequers Pond
Photo:
Peter Bedford



WEST END WILDLIFE DURING COVID-19 LOCKDOWN

Several readers sent in images and reports of rarely seen wildlife in the village during the lockdown!

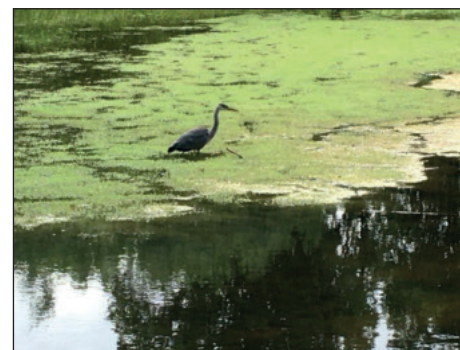
Graham Peggs captured these amazing images of a Grass Snake and a Bee Fly in his garden in Hawkshill Way. Graham said this has been a remarkable year for birds with 20 or more species being seen regularly in his garden, even a Grey Wagtail was seen on his lawn two weeks ago.



Below: The elusive Heron surveying his territory over Chequers Pond from the top of the chimney pot of The Chequers. *Photo: Rachel Gee*



..... and in his territory on Chequers Pond.
Photo: Nik Wilkinson



ARE YOU INTERESTED IN FRENCH LANGUAGE, LIFE AND CULTURE?



Due to the Covid 19 pandemic, the Cercle Français d'Esher offers virtual conferences on Zoom and this until it is safe to return to the West End Village Hall.

Should you be interested in joining one of these conferences, please contact:

Mrs Brigitte Tiller brigitte@ptiller.com

You can also visit our website:

www.dontyzack.care4free.net/cercle.html

The next conference will be held on August 19, 2020 at 8 pm, on Zoom. "Saint Antoine l'Abbaye en Dauphiné"



WEST END CREATIVE WRITING GROUP

HOLIDAY

By Sheila Lucas
1954

A short story

'But why do I have to go?' I asked my mother for the umpteenth time.

'Luvvie, we've been through this. It's the summer holidays, you've got six weeks before you go back to school and I have to go to work to keep a roof over our heads.'

I looked up at the yellowing ceiling of the living room in our cosy little London two-up two-down trying to stop the tears forming in my eyes. My small brown leather suitcase stood beside me and I clutched Teddy Brumas by the neck in my hands.

'C'mon that's Uncle Dick's car just pulled up outside. It'll be a great holiday for you,' Mum said slightly over cheerfully as she pulled the net curtains to one side, waving.

Uncle Dick was a burly, healthy-looking man with soft grey curls that hung like a halo around his head. He wasn't my real uncle but had been a good friend of my dad's. He and his wife, Mabel, had always looked out for Mum and me since my dad was killed at the end of the war. I never actually met him but I think he must have been nice because people were kind about him and spoke of him fondly. His dark blue overcoat always hung in the hall because Mum said it made her feel safe and sometimes I used to catch her looking sad when certain tunes came on the radio. Mostly though, we were fine. She worked in the office at the Co-Op and I went to St Stephen's school, letting myself in by putting my hand through the letterbox and pulling on the string that had the key attached. I wasn't supposed to but sometimes I'd stay out for a bit to play Jacks, marbles or two ball against the wall with my friends or even better, take an illicit excursion to the derelict bomb site to play 'war games'. Of course, Mum didn't know about any of that.

I climbed in the back of Uncle Dick's muddy green Morris Traveller squeezing in behind the front seats. My case was put in the section at the back which on the outside looked a bit like a wooden crate. Mum sat in the front with Uncle Dick. I hadn't actually been in a car before and it felt very odd with houses passing us on one side and cars on the other. Gradually the houses were replaced with hedges and trees and hills in the distance. I felt a bit sick but didn't like to say. Mum turned to me and smiled letting me pick a barley sugar sweet from a pretty round tin which she said would help. I would have preferred a sherbet lemon even though they cut your tongue but they weren't on offer. As the car struggled up a steep hill it started to go so slowly I thought it would stop and Uncle Dick used the stick in the front to make it jerk forward with a crunching sound. He said everything was OK, he was just changing into first gear to make the car go up the hill better. We all started saying 'I think I can, I think I can'. And when we got to the top 'I knew I could, I knew I could'. I liked that story 'about the little train. I must have fallen asleep with the rocking motion of the car because I was woken by Mum gently rocking me.

'Susie, we're here. Wake up, Luvvie.'

Well, I don't know how we managed to cover the distance from London to deepest Sussex but here we were and it was raining. With sleep still warming me I shivered as the dampness and the raindrops hit me. That wasn't all that hit me.

'Oh, what is that smell?' I shouted, holding my nose.

Uncle Dick and Mum just laughed and Mum said, 'That's the smell of the countryside.'

Oakleigh Farm was, well, a farm. I'd only ever seen cows and sheep in books and, as far as I was concerned, eggs, fruit and vegetables came from the stall down the market. We didn't have the money for holidays. Mum said we'd done a bus journey to Surrey once but I don't remember. The old farmhouse was a two-storey flint and brick building with a porch jutting out in the middle. Standing in the porch was a smiling Auntie Mabel.

'Hello my lovelies, c'mon in out of the rain,' she said throwing her arms wide. I liked Auntie Mabel; she matched Uncle Dick perfectly with her rosy cheeks and plump, pink arms. She welcomed me into her flowery bosom, cuddling me close until I had to come up for air. Both she and the snug farmhouse kitchen smelt of fresh baked scones, flowers and.... slightly wet dog. I looked around and there, sat warming itself by the Aga, was a shaggy black and white collie. Following my gaze Aunt Mabel said 'Oh don't you mind Peggy, she's quite old now and doesn't work the sheep so makes the most of her retirement indoors. We've got two more young 'uns, Fly and Pete, outside who do all the work now. Dick, why don't you take Susie up to her bedroom and Florrie and I can have a catch up.

To be continued in our next edition.....

SANDOWN PARK PLANNING APPLICATION GETS POLITICAL!



The Jockey Club has submitted an appeal for their scheme at Sandown Park of 318 flats and 150 bed hotel, after Elmbridge Council unanimously refused planning consent. It will go to Inquiry in November, however the Housing Secretary Robert Jenrick has intervened and recovered the Appeal. This means he will now be the one to decide if the scheme can go ahead. You may have seen recent coverage in the Times which raised concerns over the close connections the Jockey Club has to Central Government. Esher Residents Association and Save Esher Greenbelt remain utterly opposed to the scheme. This enormous development is NOT right for Esher - it's on the Green Belt, it's a completely inappropriate density for the location and it will change the face of our town for ever. We strongly object to the Jockey Club's argument that instead of meeting the required affordable housing standards, the money is to be used to refurbish the stadium for racegoers. As a result, 80% of the scheme will be expensive luxury apartments. The lockdown has highlighted the immense importance of our local green spaces. As you next pass the racecourse along Portsmouth Road and Lower Green Road, imagine what it would be like if the trees were replaced by 4-6 storey buildings.

We urge residents who share our concerns to write to MPs Dominic Raab and Robert Jenrick expressing opposition to the scheme.

Linda Stotesbury, Esher Residents Association

ST GEORGE'S CHURCH WEST END

In our last update we were delighted to announce that The Revd Darren McCallig, was to be installed as Rector of the Parish of Esher on Monday 23rd March. What a memorable date. Plans for a packed church to celebrate and welcome Darren and his wife Annelise suddenly ground to a halt. As you know, "full lockdown" was the next day – and in order to comply with government and Church recommendations the service went ahead – but with only six people: The Bishop, The Rural Dean, Darren and Annelise and our two Churchwardens, Sandra and Helen. How blessed we were that the service managed to take place in time to enable Darren to begin his ministry here in Esher. As soon as the churches re-open fully – we will be able to hold the postponed party and celebration to welcome and actually meet in person, Darren and Annelise. What a challenging start for him – but within a matter of days, the first of his weekly online services was uploaded to the Parish website - enabling us all to join the Palm Sunday Service on the 5th April – but at home. This was followed by the Easter Sunday service – and from then on, every Sunday, we are able to listen and join the Eucharist Service with hymns, prayers, the sermon and beautiful music. We would encourage you to go on to our Parish Website <http://www.esherparish.org.uk> and listen for yourself. The weekly church services led by Darren have been a wonderful way to feel as though we are still together – but we all look forward to getting back to our Sunday mornings at West End – and meeting and hearing Darren in person.

As we write this update – things are changing daily – and our churches will soon be re-opening for Sunday worship. However – this may start with Christ Church opening first (being the larger church) – to be followed by St George's as soon as it is practical and safe to do so. At the moment St George's is open for private prayer on Wednesdays and Sundays between 2pm and 4pm. Please do look at the notices on our fence – and look at the website for regular updates on this news.

As many of you know - it has been a tradition at St George's for the children to gather with two of our "mums" (Jen and Sarah) to discuss the story of Easter and for the children to build an Easter Garden. Last year this didn't happen as Jen was away and Sarah was in Canada! But we still managed to create a small garden inside the church. Last year, our Venerable David Gerrard had spotted an Easter Garden displayed **outside** a church in Yorkshire. Andrea and I had thought it might be an idea to do this at St George's. Little did we know then that we would not have access to the church this year -so we decided to do it anyway – and it was placed just by the step, in front of the church. You may have spotted it?



Photo: The Easter Garden

Have you spotted activity in the garden at St George's over the lockdown period? The gardening team - Clare, Stephanie and Andrea have spent hours there, making the garden look absolutely wonderful. New turf has been laid at the side of the church...hedges and trees have been

trimmed - now making the pathway much easier to walk through to the rear garden. Peter has mown the grass....so now it's the perfect place to spend some peaceful and thoughtful time whenever we need it. Hopefully you saw the Azaleas whilst they were in bloom – such vibrant colours. We are so grateful for their efforts and enthusiasm. If the Churches are closed, the gardens at St George's are very much open and accessible to everyone. Do please come and enjoy them. They are there for all of us, especially at this difficult time. They are incredibly quiet, restful and peaceful, and provide a tranquil and welcoming oasis in which to sit.

Right: The Garden

Some years ago, we realised that there was never enough time after the church service to catch up on everyone's news. We planned an evening at the Prince of Wales for any of the ladies who would like to join us for a drink and a chat. To our surprise about 15 of us turned up and it proved so popular that we agreed to meet regularly on alternate months – and it became known as "The Tipplers". On average there are between 12-20 of us – and the age range is from 30-95! This provides a wonderful opportunity to welcome newcomers to bond, exchange ideas



and support those who are lonely or unwell. Indeed, many worthwhile fundraising ideas have been conceived over a glass of wine! The last few ideas have included starting a theatre club, designing a new Christmas Card, holding a weekly coffee morning in the Sports and Social Club, a flower festival, an organ recital and a new Village Recipe Book (the last one was a huge success in 2013). Of course, all these are on hold for the moment. However – during the lockdown we have used group emails and telephone calls to ensure we all keep in touch somehow.

This year will indeed be very strange without our annual West End Village Show due to be held on Saturday 29th August (Bank Holiday weekend). As you know, for the Parish it is our major fundraising day – when the team from Christ Church provide the cream teas in the Village Hall, and The St George's team run the cake and bread stall and raffle in the church. It's our one opportunity to open St George's to the public to pop in and look around (and buy cakes!) and has often resulted in bookings for weddings or baptisms. If the Show does not go ahead then we plan to open the church to you all in West End to celebrate our re-opening, whenever that may be.

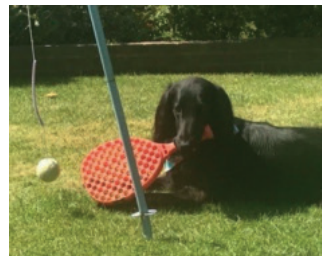
Please do look at our website, <http://www.esherparish.org.uk>, where Darren posts the weekly online services, together with the service booklet and pewsheets weekly news.

Finally – thank you as always for your continued support and we wish you all a sunny and relaxing summer. Keep well and keep safe.

Andrea Lindow and Bridget Williams

INDY'S DOG BLOG

Well what strange times we've had. I'm exhausted! I've had my mummy and daddy and both small humans at home with me 24/7. Entertaining them has kept me really busy. Usually I get to have at least two or three dog naps whilst they're at school but these days I'm on duty all day. I even have to help with home schooling by sitting on the youngest human's feet to make sure she doesn't move and then I move to the oldest small human and she fusses my ears whilst she works. Mind you there are some benefits, I've learnt new skills; to fist pump, do obstacle courses, bounce on the trampoline, play swing ball and when we are out and are approaching people, we do this funny dance called 'socially distancing'. Sadly my family don't seem to use the car much these days which was a good place for me to snooze and we don't go for fun trips to buy dog treats in Garson's because we dogs are not allowed in at the moment but it's funny that when anyone in my family exercises they all want to take me. I'm the only one who's lost weight!



We've had some building work done in the garden which has given me the opportunity to become acquainted with sandwiches, bribes from the builders, when mummy isn't looking. She always knows though cos later in the day my bottom makes funny noises, and all my family says 'oh Indy!' and I'm sent into the garden. I missed my Nana as she didn't come to see me for ages. I turned my back on her for the first hour to show her how annoyed I was



with her. I couldn't stay cross for long though as she brought copious amounts of bonios and gave me a good tummy rub.

I always looked forward to the West End fair as I enjoyed meeting you all in the dog show but it is very upsetting that it won't be happening this

year and I will really miss it. Not sure what the next three months will have in store for us but whatever you do I hope both you and your humans stay safe. Don't forget to say hi and do a socially distanced dance when you see me, I'm the flat coat with the pretty turquoise collar who lives at the top of the hill.

Indy



Claremont Fan Court School

An independent co-educational school for pupils aged 2½ to 18 years



Pre-Preparatory, Nursery and Forest School



Our wonderful school is set in 100 acres of Esher's beautiful parkland, where children grow and develop in a secure and healthy environment.

Please contact us to arrange a visit.



claremontfancourt.co.uk | 01372 473780 | admissions@claremont.surrey.sch.uk

GARDEN CENTRE • RESTAURANT • FARM SHOP
BEVAN'S BUTCHERS • PICK YOUR OWN

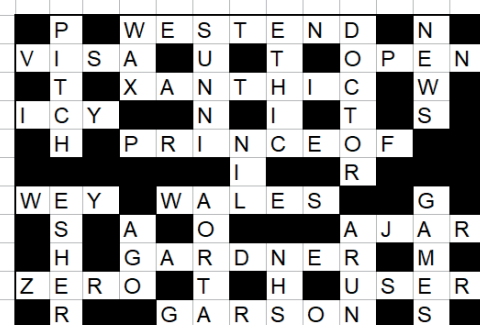
Garsons

Growing since 1871

  
www.garsons.co.uk
01372 460181

Garsons,
Winterdown Rd,
West End, Esher
Surrey KT10 8LS

CODE WORD ANSWERS—Don Tyzack



Not Used: B,K,Q

1	2	3	4	5	6	7	8	9	10	11	12	13
E	O	F	P	A	Q	Z	B	R	S	C	T	D
14	15	16	17	18	19	20	21	22	23	24	25	26
I	G	H	J	Y	X	K	W	L	V	M	U	N



A beautiful Black Swan— Photo: Don Tyzack

Alan Greenwood & Sons

Independent Family Funeral Directors

A Traditional Family Owned Local Company
Jaguar or Mercedes Hearses and Limousines
Funerals from £950

13 Molesey Road, **HERSHAM**, KT12 4RN

01932 260 046

Please Visit Our Website for Full Details of our other Branches and Services
www.alangreenwoodfunerals.com



Brodie & Hickin Landscapes

Est. 1980

- Patios • Driveways • Brickwork • Fencing • Ponds • Turfing
- Decking • Pergolas • Tree Surgery • Planting Schemes

Urban Gardens to Large Estates - Fully Qualified Team - Fully Insured

We pride ourselves on being Reliable, Friendly & Efficient
Please call for a FREE estimate



Phone: 020 8398 5000

www.bhlandscapes.co.uk • Email: info@bhlandscapes.co.uk
64 Couchmore Avenue, Esher, Surrey KT10 9AU



Wheatley & Sons Limited
ESTABLISHED 1850

Telephone: 173 P.O. KINGSTON
**BRIDGE ROAD, EAST MOLESEY,
and HIGH STREET, ESHER.**
WHEATLEY & SONS,
(Successors to J. Wheatley & Sons, Ltd.)
**Builders, Contractors,
& House Decorators.**

GAS, HOT WATER and SANITARY ENGINEERS,
PLUMBERS, GLAZIERS, and BELL HANGERS.

Jobbing Work of every description with Bricklayers, Plasterers,
Carpenters, Cabinet Makers, Painters, Paperhangers, Glaziers,
Gilders, Plumbers, Gas and Bellfitters, Tinsmiths, Smiths, &c.

Carpets taken up, Beaten and Relaid. Stoves and
Ranges Supplied and Set. Boilers Cleaned. Kitchen
Utensils Retinned.

HOUSE DRAINAGE & VENTILATION A SPECIALITY.
DRAIN TESTS and REPORTS.

PLANS prepared and advice given upon all matters
connected with New Buildings, Additions, Alterations
and Repairs.

FUNERALS FURNISHED in best style and conducted
to any part of the country. Cremations arranged.
Monuments, Brasses, Memorial Windows &c.

HOUSE & ESTATE AGENTS. FIRE & LIFE ASSURANCE.
RENTS COLLECTED. VALUATIONS FOR ALL PURPOSES.

NO JOB TOO SMALL
Telephone 020 8979 5762
Fax: 020 8941 7388

Email:
wheatley_sons@btconnect.com