



VILLAGE NEWS

WEST END ESHER

Volume 17 Issue 4
CHRISTMAS 2020
THE VILLAGE CLUB
SPECIAL
2ND LOCKDOWN EDITION



AFC WESTEND – New Sponsorship Deal



AFC Westend are proud to announce that they have a new sponsorship deal with Hersham Service Station for season 2020/2021. In the photo (left) are Pash and Greg from HSS seen holding the brand new kit that has just been delivered from our new supplier. Keith Harris, club secretary, said that the club is looking forward

to working in close harmony and co-operation with them throughout the season. Please don't hesitate to contact them if you should need any work done on your vehicle on 01932 229 022 or 01932 222 855 where they will be pleased to help you.

Sponsor – 2020/2021

AFCWE are proud to announce that we have a new sponsorship deal with Hersham Service Station. Please see the separate flyer for all the details of this exciting venture, including the arrival of our fabulous new kit.

Well there we are folks so I will sign off by saying, on behalf of everyone at AFC Westend we wish you and you families a very Happy Christmas and our best wishes for the New year, wherever and however we find ourselves, let's make the best of a bad situation, obviously, this is all so uncertain at the moment, but, let's hope that things improve by the 2nd December and Boris says we can get on with our lives again.

Take care everyone, stay safe and we wish you all well.

Keith, Eric, Pash, George and Joe

EMBER MANOR LODGE

Ember Manor members met in March, for what was to be the one and only time this year, when we installed our new Master, Rob Hillman. Rob, who lived locally until recently has now moved down to Cornwall. Perversely, due to having to cancel our physical meetings, we have seen more of him through our Zoom meetings than we would otherwise have done. We can't perform any Masonic ceremonies or approve any formal proposals at these online gatherings, which we hold every other week, but we can keep in touch and that is important to all of us. These meetings have been organised by one of our newest recruits and what is the norm to the younger members of our society is still something quite splendid for those of us who are, shall we say, more mature citizens!

So I am suffering from withdrawal symptoms, I have been a member of Ember Manor for over 50 years and this is the longest period in all of that time that I have gone without enjoying the companionship of my fellow members and the banter in the bar and at the dinner after the meetings.

As with all organisation maintaining contact with our members is important but we are also still able to make Charitable donations both locally and nationally. At a local level Ember Manor is supporting the Leatherhead Youth Project with a donation of £1200; at the County level support is being provided to Surrey bee-keeping groups and another initiative will enable a charity to purchase a new mini-bus. On a grander scale thousands of older people who have been badly affected by the ongoing COVID-19 crisis, will be given help and support, thanks to a £250,000 donation to Age UK's 'Emergency Coronavirus Appeal' from the Masonic Charitable Foundation (MCF), the Freemasons' charity.

I am hoping that we will be able to enjoy more activity next year, that the Coronavirus will be contained and will be able to meet up in the Village Hall again and say hello to many of you in the Sports and Social Club bar after our meetings.

Derek Richardson

Greetings to all and welcome to your local football club news. We hope that you are coping with this very unusual year that we are all having with the Covid-19 Pandemic and our 2nd lockdown period. This will certainly have been a year to remember for all the wrong reasons and has certainly been sent to try our patience and we hope that you are managing to stay safe and well. As you have probably gathered by now our football season has been brought to another abrupt end and we are waiting with bated breath on what the Governments next move will be after December 2nd as to whether local grassroots football will be able to resume playing, or not, as the case maybe so watch this space!

We as a club have put in place all the necessary Government safety procedures, carried out risk assessments and have followed them rigorously, so we are confident that we are/have been doing the right thing, up until now that is!

Anyway, here is our latest news for both teams up to the weekend of the 31st October: -

First Team

After being promoted back into the Premier Division as league champions from last season, we have played 5 games, won 2 of them and have lost 3 so far in what is a very tough league. However, after speaking to Team Manager George Nixey he is confident the boys will more than hold their own and can move further up the table, if and when the season starts again, at the time of writing they are currently sitting in 4th place.

Reserve Team

So far, our Reserve team has played 3 league games and lost all 3, they have also played one County Cup game and won this 2 – 1. Team Manager Pash Barbato quoted, this is virtually a brand new team with lots of new players coming in and they just need to gel together, as was displayed in their last outing where they came from behind to win the game and gave a really assured performance, Pash then said once we get back to playing if they can carry that type of form forward they should rise up the table.

Website

Just to let you know that we have a fantastic revamped website that has just gone live, you can still find out all our latest news, results and the latest Village News will be added soon, please check us out on www.afcwestend.co.uk the club would like to thank our website designer Gerard Loret for all his hard work on getting this set up for us.

WEST END GOLF SOCIETY

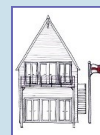


Any person wishing to join
the WEGS
can call

Dave Morgan on
07956 129987
or
Allistar Goff on
07958 221566

THE VILLAGE CLUB

PLEASE VISIT THE WESSC
WEBSITE FOR THE
CALENDAR OF EVENTS



www.WESSC.org



WEST END MOTOR CLUB

As Ken reported in the last edition, the car club resumed activity after the spring covid-19 lockdown with socially distanced morning coffee-car meetings exploring the local area as well as socially distanced

Thursday evening meetings for a swift half at the clubhouse. We met at the Hog's Back (sunny, shared parking with trucks), Cowey Sale (damp), Box Hill (bottom of hill, cold and damp, shared with bikers), Newlands Corner and Ockham Common. At first we enjoyed warm sunny weather, then as autumn drew on not so warm, but still usually dry – good for those whose classic car option was open top.

Anyone with a classic car who would like to join our coffee-car mornings please contact Ken who will advise of where, when and how



they are happening. You will also be welcome to join us at the clubhouse when meetings there can be resumed.

Left:
Cowey Sales
Club cars line
up

October 7th David, Ken and I made a longer trip to meet Bob Thompson, formerly of West End, at the Noah's Ark pub in Lurgashall near Petworth. He arrived in his Austin 7 Ulster Replica named 'Buzzard 2'. Built by Charles Pocklington in 2004/5. Bob bought it in 2006, but later sold it to a new owner in Cornwall. He bought it back this year, re-uniting it with Charles' 1927 Chummy which he also bought in 2006, and to be closer to its brother 'Buzzard 1' which still lives in West End. Charles' other car the 'Pocklington Special' changed hands several times since 2006 ending up in Norfolk. It did have a typical A7 special polished alloy body, but is now green with a high tail after the style of a 1930s Alfa Romeo racer.

Bob was organising this year's WEMC Pocklington Classic Rally to Wiltshire, to take place after the Annual Show, but LOCKDOWN2... Now we hope the Pocklington Classic Rally can be run in 2021.



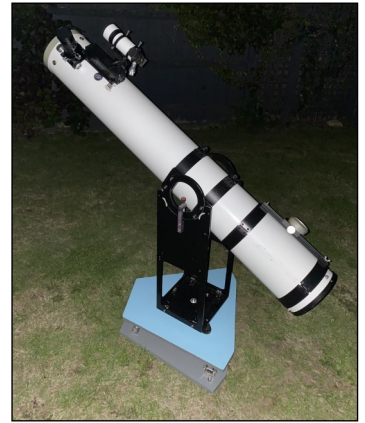
Noah's Ark—Buzzard Sandwich

Article and Photos: Roger Brown

THE WALTON ASTRONOMY GROUP

Mars Attacks!

Mars is the fourth planet out from the sun, with the Earth orbiting next closer in. Mars takes 687 days for its own 'year', vs our 365 and a bit, and as a result, approximately every 2 years and 2 months, Mars reaches what is called Opposition. This means it is opposite the Sun in the sky, at its closest to the Earth and highest in the sky at around midnight.

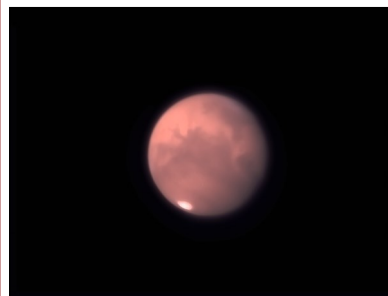


For most of the year, us hard done by UK astronomers have been eagerly anticipating the close approach of Mars which occurred on October 13th 2020. The main reason for the excitement was that Mars would be at 44 degrees above the horizon, and would not be this close again until 2035!! My eyes will likely be pretty shot by then so I was determined to make the most of this one.

With the vagaries of the British weather, it is always a good idea to take any chance you can to observe the planets when they are close. In the end, I didn't see the planet on its closest approach, but had a number of excellent sessions before and afterwards which were highly memorable. My best session was on 22nd September, a time when Mars was reaching its highest at about 2.40am, so I duly set my alarm for 2.45am and observed for around 1.5 hours. Conditions were excellent, and I was able to use magnifications of up to x360, wonderful stuff although I was a little jaded in the morning. Thank goodness for working from home currently!

The detail that can be seen when conditions are good really is quite amazing, although it takes perseverance (you could say sheer bloody mindedness!) to see the best of the detail.

Just like on Earth, the polar regions are frozen, and the Southern Polar cap was clearly defined as a bright white oval in the scope. Over the time I observed Mars from September through to the present, the cap has visibly shrunk, in much the same way that the Arctic ice reduces in size in the summer. The North pole is quite different, and showed as a blue-white frosting, much larger than the South Pole but also much more subtle. The other main features of interest are dark markings on the surface, which at times look a little like continents on the Earth. Of course they are nothing of the sort, and are actually just dark basalt type rocks which have been swept clear of the red dust which



covers the rest of the surface. Nonetheless, when viewing Mars under good conditions it is hard not to imagine you are looking at a red twin of Earth. This image was taken by an astronomer friend of mine, and has been detuned to give a realistic view of what can be seen through a telescope under good conditions, albeit much larger than the reality.

Mars by Steve Ibbotson

The other amazing thing is being able to see the planet rotate slowly as you watch. I observed on 12th September for 4 hours, and during this time was able to see the major features move most of the way across the surface; quite incredible.

If you look due South at around 9.30pm at the moment, you will see a very bright, orange 'star', which is in fact Mars. It can be seen for most of the night now, rising in the afternoon and setting just before 4am.

All in all, Mars has been memorable this year, and I've had the best views of it in over 20 years of observing.

Stuart Davis, Chair