



FOLLOWING A YEAR OF UNCERTAINTY AND LOCKDOWNS HOPEFULLY AN END IS IN SIGHT FOR COVID-19 RESTRICTIONS

Firstly, the all important and wonderful news that the UK Covid-19 Vaccine rollout is proving to be a great success. At the time of going to press more than 22m people have received the first vaccine dose and more than 1m the second dose. However, a new variant from Brazil has been found in the UK which is more virulent and causing some concern. On the 22nd February the Prime Minister, Boris Johnson, announced the publication of the third lockdown roadmap setting out a cautious schedule with 12th April and 17th May as dates for further easing of restrictions, and a possible target end date of 21st June. This is very encouraging news!

The re-opening of schools, colleges, businesses and travel will be a huge relief for many! We all look forward to being able to support and enjoy the hospitality of the Village Club, Bar and Café, Village Hall, the Prince of Wales, Garsons restaurant, village sports fixtures, the Village Show and meeting up with family and friends in the months to come. Thinking positively, the flowering of daffodils, crocuses and blossom is a sure sign Spring is on its way!



Above: Louisa, Chris, Poppy and Ivy Houghton with puppy Betsy enjoying the snow! Ivy is just out of the picture rolling snow!

Below: Introducing "Dino" - the builders, from left to right are Rocco, Frankie and Jack Parsley from Brisson Close.

Photo: Tony Currie



ELMBRIDGE PARKING REVIEW 2019/2020

Winterdown Road, Garson Road,
Nightingale Road and Winterdown Gardens

A brief extract from the Elmburgh Parking Review on page 9 outlines new parking restrictions which have been proposed and agreed for Winterdown Road. A copy of the plan is also provided separately.

WEST END VILLAGE SHOW

As Government restrictions are lifted cautiously over the next few months, the West End Village Show Committee is considering what could be put together for the village this year. It would be great to think that things will be back to normal but that seems unlikely.

Because of this, we have decided that sadly, it is not viable to hold our traditional Show but we do hope that we might be able to put on a safe event in the spirit of the Show to end the summer on some cheer after difficult times living alongside a pandemic.

Plans, of course, will be subject to change but more information will follow via our website, the Village News, social media and, if we can go ahead, we'll organise a leaflet drop in due course.



Steve Kelly, Chairman

GARDEN CENTRE • RESTAURANT • FARM SHOP
BEVAN'S BUTCHERS • PICK YOUR OWN

Garsons
Growing since 1871



www.garsons.co.uk
01372 460181

Garsons,
Winterdown Rd,
West End, Esher
Surrey KT10 8LS

VILLAGE HALL RE-OPENING ROAD MAP

In common with all other organisations like ourselves, West End Village Hall has been in lockdown since 5 January and with the exception of a Playgroup for young children, no activities have been allowed.

However, on 22 February, the Prime Minister announced a road map for easing restrictions that has allowed us to re-open our Hall on a stepped basis.

The first step will be to allow bookings from 12 April 2021 for:

- Children's out of school activities
- Meetings for small groups and organisations
- Small education groups

The next step will be effective from 17 May 2021 when bookings will be allowed for:

- Exercise classes including Yoga and Pilates
- Meetings for groups and organisations of up to 18 people
- Community groups and coffee mornings
- Small wedding receptions, wakes and christenings up to a maximum of 18 people

Finally, from 21 June 2021, all legal limits on social contact are to be removed and bookings can be made for:

- Children's parties
- Wedding receptions, wakes and christenings up to a maximum of 75 (our Hall's capacity)
- Meetings for all groups and organisations

Due to our location, adult parties are only permitted for West End residents with the agreement of the Trustees.

Until 21 June, government regulations and guidelines will remain in place and for all bookings up to this date you will need to agree to our Special Conditions of Hire during Covid-19. Continued attention to hand washing, good hygiene, wearing of face masks and social distancing will still be required together with test, trace and isolate.

If you are interested in booking the Hall, full details can be found on our web site – wevh.uk. We are delighted to be able to welcome you back and look forward to the Hall once again playing a full role within the heart of our community.

*Paul Gibson, Treasurer
West End Village Hall*



West End Village Hall



Ideal for children's parties, meetings, functions and family occasions.

Adult parties strictly for Village Residents only by special arrangement.

TO BOOK

Visit: wevh.org or wevh.uk

Mail: hirehall@wevh.uk

PHOTOGRAPHIC CORNER



Jackie Palmer with Spring Flowers in her cousin Jean Brownlie's garden.

Photo: Peter Bedford

TREE CREEPERS

Over Christmas we have been walking in Dick Fock's Wood to try to see the Hawfinches, but have failed.

However we managed to spot Treecreepers on two occasions there, but due to intervening branches etc. I failed to photograph them even though the first sighting was of three birds. In despair we went back to our more local Gt. Ridings Wood not looking for birds, just for exercise.

What do you think? Yes, we spotted another Treecreeper and I even managed to photograph it!

Fate seemed to be against me because I tripped on a stump and fell over in the mud onto my camera. Imagine my relief when I got home to find that not only was I all in one piece, but the camera was too!

Don Tyzack

Not often seen in our gardens, Don also photographed this pair of Siskins in his garden in East Horsley
Below Left: The female Siskin



IMPORTANT PLEASE READ.....

Call 999 for Emergencies only.

Call 0800 555111 for Crimestoppers.

Call 101 - Surrey Police for General Enquiries and non-urgent matters.

This number will also transfer you to Esher Police Station, which is open from 09.00-17.00 hours Monday to Friday.

Sgt 1898 Pat Bauer covers Esher

PCSO 16888 Kat Mey covers Esher

PC 3435 Ian Hallam is the local Esher Officer

Officers can be contacted by dialling 101 or email: the Elmbridge Policing Team at elmbridge@surrey.pnn.police.uk

Contact for Neighbourhood Watch is now:

PC40489 Chris Smith is the local PC Tel: 101 or ext 38298

<http://elmbridgenhw.ourwatch.org.uk/>

IN THE KNOW—Surrey & Sussex

- ◆ **KEEP YOUR DOORS AND WINDOWS SECURELY LOCKED AT ALL TIMES AND ONCE AGAIN PLEASE REMOVE ALL VALUABLES FROM CARS WHEN PARKED.**
- ◆ **WATCH OUT! BURGLARS AND CAR THIEVES ARE ABOUT!**

Reports of several incidents of dog napping, daring burglaries, car thefts, doorstep and on-line scams are also ongoing in and around Elmbridge.

Please report suspicious incidents via 101, or in an emergency 999.

You can also contact Surrey Police online:

<https://www.surrey.police.uk/contact/af/contact-us/>

Or Facebook <https://www.facebook.com/Surrey Police & Twitter>



DEFIBRILLATOR

OUTSIDE VILLAGE HALL

No training required - anyone can use it

Dial 999 and give the location

You'll be given a key code to open the box

Follow written instructions on the portable unit

Verbal instructions are provided once turned on.

SURREY ARTISTS' OPEN STUDIOS

5th —20th June

Once again, the Stable Artists will be holding their Open Studio from 5th to the 20th June - and we welcome you to come and see us in the Victorian stable, secluded garden and conservatory at Rose Cottage, 46, West End Lane, next to the Prince of Wales pub.

There will be seven local artists / craftspeople participating, each one with something different to offer.

In the garden you will find the Celtic inspired, bronze resin sculptures of Janet Stanley who will also be showing table-top sculpture, figures modelled in wire and plaster - some of them balletic in form. In the conservatory there will be an amazing display of Roger Marsden's wood turned items ranging from bottle stoppers to bowls in beautifully textured or smooth, often unusual, woods.



Right: Janet Stanley's sculptures.

Below: Dawn Thornhill's 3D lightboxes

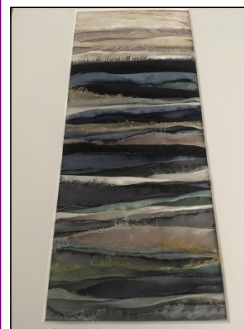


In the stable, downstairs, Dawn Thornhill has her magical, cut paper 3D light boxes and also bright coloured prints inspired by nature and Beryl Hole's ceramics range from a contemporary to traditional use

of the medium using different firings including Raku.

Rosalind Moysen will be showing her latest acrylics, collages and mixed media paintings inspired by colour and texture.

Upstairs in the stable Wendy Hale has her finely embroidered pictures and Keira Graham's pictures are in silken textiles, creating semi-abstract landscapes in subtle colours. She also has designed a range of colourful purses, personalised cushions and sewing kits.



Left: Beautiful rich Silas framed with UV protective glass to protect the silk from fading.

Photo: Keira Graham

REDEVELOPMENT PLAN FOR THE PRINCE OF WALES PUB

Elmbridge Borough Council has received an application for a significant redevelopment of the Prince of Wales in West End Esher. The details, and opportunity to register comments, can be found at the Council website under Comment on a planning application using the application number: 2021/0413.

VIRTUAL VILLAGE QUIZ

Helen Hambleton and Steve Denham hosted a big Virtual Village Quiz on Wednesday 17th February, to coincide with National Random Acts of Kindness Day!

In the end, despite a few initial technical challenges, we had over 45 people from the village take part across 9 teams. We asked for donations to Princess Alice Hospice from those that attended, and we are pleased to confirm that we raised £255.



Congratulations to winning team "West End Wanderers", a close second from "Hot Dogs" and an impressive third for "Just Say Yes".

Helen Hambleton

We will be open from 11am to 5pm on Thursdays, Fridays, Saturdays and Sundays during the course of the exhibition, between 5th and 20th of June. Come and enjoy! Dogs, bikes and children welcome!

Rosalind Moysen

A TRIBUTE TO A COVID-19 SHIELDER

It is hard to comprehend that it is a year ago in March the UK, and indeed the whole world, was plunged into a crisis when the Covid-19 (Coronavirus) pandemic swept the world. For the entire population the situation has been difficult and for those people most vulnerable it has been almost intolerable having to shield or isolate in their homes for weeks, months or even the whole year! There are many cases both on the news and locally where we know of such unfortunate cases, not least in our own village. I would like to pay tribute to all of you for whom it has been necessary to shield at home during these most difficult and unprecedented times!



I praise one person in particular for her upbeat and positive outlook who hasn't been out of her house now for a year since 5th March 2020. She has not had the pleasure of seeing the village green and its surroundings or being able to pop to the supermarket to do her own shopping.

It is with great admiration that many of us have watched our neighbour, Greta Wennike, whose optimistic and selfless attitude to her unexpected and unwelcome incarceration at home owing to the Coronavirus and health problems has been truly amazing. Greta has been stoic throughout, keeping in touch with us all by email and is often seen at her bedroom window always happy to chat and pass the time with neighbours and friends passing by. Greta is happily occupied with her crafts which she finds a life saver, together with the use of the internet and sending us jokes and humorous anecdotes!

Many of her neighbours keep her updated with events in the village and helping in any way they can, but Greta is fiercely independent and just gets on with life in the most impressive way. Greta is just one of many thousands who have had to endure this lifestyle during the Covid-19 pandemic in order to stay safe. We look forward to seeing Greta (and others like her) out and about in the coming months!

Angela Stockbridge

COVID-19 PANDEMIC 3RD NATIONAL LOCKDOWN

Boris Johnson addressed the nation on 4th January 2021 and announced England would go into a 3rd national lockdown the following day, following a huge increase in Covid-19 cases and the discovery of a faster spreading variant of the virus found in Kent. The forced closure of schools and all non-essential shops was once again imposed upon us. GCSE and A Level exams to be held in the Summer have been cancelled and schools closed except for the children of key workers. Travel is restricted and many returning to the UK from high risk countries are required to quarantine in hotels at their own expense for 10 days.

There are many new variants of the virus including ones found in South Africa and Kent and Brazil. Three vaccines, AstraZenica, Pfizer-BioNTech and Moderna, were approved by MHRA in record time, with Johnson & Johnson more recently. Novavax and Janssen are awaiting approval, together with others around the world. The speed with which the vaccines have been approved is thanks to the brilliant work of scientists. The Government has put in place a mass vaccination rollout programme. To date almost 23m people have been vaccinated in



*Above: Esher Common
Car Park Portsmouth Road*

an age structured way at centres throughout the UK. Regrettably, the number of deaths has already risen to over 125,000 in the UK and in excess of 2,500,000 world wide.

Despite the advice to stay at home, people are still able to exercise with

caution, but the amount of car parking along grass verges on the Portsmouth Road, in laybys and surrounding overflowing car parks is quite staggering. Cyclists have also taken to the road like never before and the parks and woodlands are buzzing with activity.

Angela Stockbridge

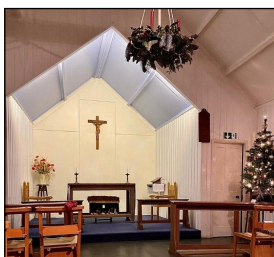
ST GEORGE'S CHURCH WEST END

Well as you may remember, we managed to re-open St George's in September and October for services on alternate weeks. It was tricky as we needed to plan the seating for each week – and split the usual congregation into two – as we could only manage half our usual number. But it did mean that most of us managed to attend for one Sunday in each month.



*Above: Evening View of St. George's Church
Photo: Lyda Archer*

Unfortunately we had to cancel the Christmas Crib service and the Village Carol Concert – but we live in hope that they will resume this year. We did manage a Christmas Day Eucharist and then another service two days later on the Sunday. It meant juggling people to fit in the available seats – and because



we need to clean if there is less than 72 hours between service – we were back in on Boxing Day with our masks, cleaning sprays and gels to make sure everything was in order. They were the last services to be held at St George's, and although Christ Church remained open for a few further weeks – both have now been closed until it is completely safe to resume.

However – every week the 10.30 Eucharist from Christ Church is live online, and also available later to view. It is a lovely service – with parishioners contributing to readings and intercessions together with hymns and some carefully chosen music pieces from Stuart Whotton. If you haven't watched or listened before – do log on to the website <https://www.esherparish.org.uk> and follow the links to see/hear the service. Very uplifting.

At the moment Easter services are being discussed – so we are unable to tell you more. Again – please look at the website for all news and updates. It is unlikely there will be a service at St George's – but we will put an "Easter Garden" on the step at the front of the church for you all to see. We have no idea when the Pet Service will take place (it was postponed until Spring!!) – but we are determined to hold one as soon as it is possible. We usually put posters and notices up around the village – and will do so as soon as we have a date.

There is always plenty of work to be done to keep our little tin church fully functioning. Recently the gutters were cleared and some brushes were inserted to help keep the leaves and debris out. However we have now spotted quite a lot of external paint peeling – and so the next challenge will be to see how we can best repair and paint it without incurring too much cost. Our usual money from fundraising at the annual flower show obviously didn't happen last year.....

Finally, we are all very sad that Betty Whitney recently died; after moving from West End a few years ago, she had been resident at Whiteley Village in Hersham. Betty was our Churchwarden at St George's for many years and was an integral part of West End Village. Apart from being a dedicated member of the church, she taught at Esher Church School, was a member of the WI and judged every year at the Annual Village Flower Show. We understand that her funeral will take place privately towards the end of March and we will be writing more about Betty in the next edition. Our thoughts and prayers are with her family.

We are not alone in hoping that the Spring will bring sunshine, warmth and new life to the plants and wildlife of the village – but also bring us out of lockdown, so that we can start to resume the friendship and camaraderie that we all enjoy....and enable us to visit our local hostellers - the Prince of Wales and the Sports and Social Club – that we have missed so much!

Keep well and keep safe.

OUR CHURCH LADDER IS MISSING!

St George's Church roof ladder, which was stored behind the WESSC is missing. We wish to wash down the church exterior and cannot do so without it. So if you have borrowed it, or know where it is, please contact Andrea on 01372 462041.

Article and photos: Andrea Lindow and Bridget Williams

PLEASE CHECK OUR WEBSITE AND FENCE NOTICES FOR ONLINE SERVICES AND ALL UP TO DATE INFORMATION
Website details: <https://www.esherparish.org.uk>

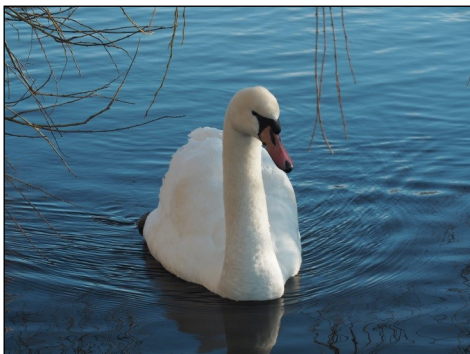
NEWS FROM WEST END POND

Otterly Palmer-Davies, made Valentine hearts with her mother, Denise and younger sister Bertie from flour, salt and water. They baked them in the oven and Otterly then hung them on the Willow trees around the pond.

Alice Austin



Below: The early arrival in the winter snow of this tiny Egyptian gosling surprised us all! It is surviving well. Photo: by a West End Resident



Above: This swan has been seen regularly visiting West End. Now there are two beautiful swans gracing our pond. Let's hope they stay and nest this year!

Photo: Margaret Dane



Our old friend 'Croc' appears to be catching tennis balls! Photo: Angela Stockbridge



West End Playgroup & Forest School

Tel: 07395 901584

Email: westendplaygroup@gmail.com

Web: www.westendplaygroup.com

WEST END PLAYGROUP

The sun has started to shine. All the children and staff at West End Playgroup are pleased to be saying goodbye to cold weather and are getting excited about a summer of warm forest school sessions, frog spotting and pond dipping. This term we have continued as normal and covered topics including Chinese New Year, Australia, Shapes & Colours and Book Week which saw many of our children turning up to playgroup dressed as their favourite story characters. Our children have produced some beautiful artwork, most of which goes home but some of which goes into making our lovely village hall displays.

Unfortunately, during lockdown we have been the only ones able to enjoy these but if you are missing the playgroup you can catch up with us on social media as we now have an Instagram account:

@westendplaygroupforestschool as well as a Facebook page and of course our website:

<https://www.westendplaygroupandforestschool.com>



We would be delighted to have you follow us and see all that we get up to. Wishing everyone in the village and beyond a very happy, healthy Easter.

Helen and the team.

TAKING A BREAK FROM HOME SCHOOLING

Here is William McCann, aged 6 years, of Garson Road taking a well deserved break from home schooling to study the wildlife on West End pond. William's Mum, Harriet Brooks, kindly sent in this photograph.

As I'm a very senior citizen I am asked if this pandemic is anything like the 2nd World War. Nothing like. It is much worse. We were able to get together to sing and dance, go to school, compete and play games with friends and classmates. There was very limited news coverage broadcast on the radio, which meant we were shielded and ignorant of what was happening in the rest of the world.



Ann Tennant

WINTERDOWN WI

Sadly we have not been able to restart our monthly meetings since the group meeting last September. It has proved to be a very challenging time for everyone. Marion our President has kept members up to date with monthly newsletters and our secretary Ann has plied us with all the relevant information that has come her way from SFWI and NFWI (Surrey and National Federations).



Photo: Margaret Dane

Some members have kept themselves busy with various projects such as Tai Chi on you tube, a trip around London with Denman online. Two members have explored almost every inch of Hersham on foot trying to obey government guidelines to 'stay local'.

One member has improved her garden, kept up with her photographic club via zoom and indulged her favourite pastime of knitting.

Other talented members have been busy crafting. One member has plans to reupholster an ottoman with some William Morris material she was given at Christmas.

Marion made a Harry Potter figure.

Ann has been busy with crochet.



Photo: Ann Tennant



Photo: Marion Ford

Last December Ann Tennant delivered a potted tulip bulb to each member a challenged us to produce the prettiest flower. The tulips are to be judged in May. I am not sure how many there will be. Two members kept their bulbs indoors and they have already flowered. Someone else reported that hers had been eaten. My bulb was attacked by an overzealous squirrel or mouse, but in spite of having a great chunk out of it, has managed to produce a green shoot. It will be interesting to see what we all manage to produce in the way of a pretty flower.



Photos: Sylvia Peggs and Margaret Dane

Some WI's have managed to set up Zoom meetings and Weybridge WI have offered to help us to set up a coffee morning via Zoom. I hope members will want to take part even if we don't have much technical ability. I hope that in a few months' time we will be able to get together in person.

Caroline Thyer

CROCUSES



I don't suppose we can do justice to these flowers. However it seems to have been a very good year for crocuses. All of the ones we have and all those of our neighbours, have had a great year.



As you can see they are displaying lots of flowers.

The incredible thing is that they have not been planted in the lawn nor planted profusely in the flower bed. It appears that our crocuses at least must have decided to look after their own seeds and throw their seeds everywhere. None of these has been planted by human hand in the lawn for instance.

They can only have got there by whatever means they use to propagate their own species. I can only presume they do this by producing a seed which is blown by wind and in some cases quite a long way as you can see.

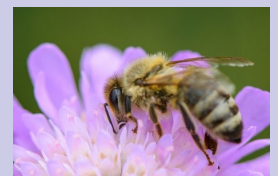
All my gardening books talk about spreading them by planting the bulbs or corms as they are called. But the seeds do a great job if you let them do it themselves.

Don Tyzack

BUTTONS & BOW (The Busy Bees)

Members of Buttons and Bow have been in touch by 'phone on a regular basis during lockdown keeping up to date with all their news. There has also been several enquiries from prospective new members.

We are looking forward to being able to meet up again and having a celebration once the Coronavirus restrictions come to an end. Like the Vera Lynn song: "We'll meet again, don't know where, don't know when, but I know we'll meet again some sunny day!" Remember I am always here for you. If you wish to know more about Buttons & Bow please contact me Betty Bowpitt on 01372 465937.



THE CERLE FRANCAIS d'ESHER



Please note the change to the meetings' time, we start at 8 pm not 8:15pm. This applies for when we meet at the West End Village Hall. le Cercle Français 's meetings are still on Zoom until June.

Anyone interested in joining should contact
Mrs Brigitte Tiller: brigitte@ptiller.com
or visit our website :
www.dontyzack.care4free.net/cercle.html

These are the dates of the next meetings:
March 17, 2021, April 21, May 19 and June 16.



MEMORIES OF AUDREY PHILLIPS April 1930—January 2021



Audrey was a Yorkshire lass through and through, an only child with doting parents. She met Eddie, her sole mate and the love of her life, through his twin sister, Kathleen, who went to the same College as she did. When they married she made her own wedding dress and baked and decorated the wedding cake. Audrey and her mother supported and help raise funds for their local Pindersfields Hospital, especially through WWII, when it was enlarged to accommo-

date evacuees, wounded servicemen and women and repatriated prisoners of war. I still have the book "Pinders Pie" with recipes collected by Rev'd Roger Crossey the full time Chaplain to the Wakefields hospitals to raise funds.

My Memories of Audrey I first met Audrey in 1963 when she arrived in West End ahead of her furniture which was arriving from Venezuela where she and Eddie had been living. Eddie was a Marine Engineer on Shell tankers and Audrey had chosen their new home on West End Lane. At that time there were 5 houses for sale four of them in West End Gardens and in no time all the newcomers became firm friends and to all the children Audrey and Eddie were "Aunty" and "Uncle". Both Audrey and Eddie were most generous in many ways giving their time and expertise in aid of many charities. Eddie made and adapted equipment for the disabled and would teach the youngsters how to safely make things in his workshop. Audrey demonstrated her baking skills and seemed to always have a wedding cake in the making for one of her many Goddaughters. I can remember her coming to my rescue when I burnt a tier of my daughter's wedding cake.

We did Meals-on-Wheels together in and around Thames Ditton for about 15 years. Me the driver and Audrey, my runner, delivering up to 21 meals in a couple of hours until we both decided it was getting too much for us. Finding parking space was the main problem. In 1983, after 20 years in No 2 West End Lane Audrey and Eddie found their perfect retirement home a few yards away in "Clover Way" and moved in with Henry, their faithful Airdale terrier.

Audrey had green fingers and everything she planted thrived and bloomed. She loved her beautiful cottage garden. Audrey regularly attended the early Sunday services at The Chapel Royal Hampton Court and was a volunteer guide and enjoyed greeting the visitors and telling the children the secrets surrounding its history.

Audrey was a member of Winterdown WI serving on the committee for several years. She made the sandwiches for their Bridge Teas and many other fund-raising events such as the West End Flower Show and will be remembered for her lemon slices which were cut into perfect fingers.

Friends gathered in West End Lane on 1st March to see Audrey's funeral cortege pass by her cottage. A service was held at Randall's Park Crematorium later that day.



Audrey and Eddie on their wedding day in 1953. Audrey made her own wedding dress.

Below: Henry their pet dog.



Ann Tennant

WINTER SCENES IN WEST END

First it was continuous heavy rain leading to flooding on the green and treacherous muddy conditions, both on the green and throughout the woodlands. This was followed by snowfall which brought out many revellers on the green for some light relief from Covid restrictions to enjoy walking, sledging and making snowmen. Temperatures dropped to -8° C leading to the majority of the green and ponds being covered in floodwater and ice and a visiting colony of gulls'.

Below right: The flooded green and gulls! Photo: Jackie Bisson

Below left: A wet walk. Photo: Nik Wilkinson who has never seen the woods so wet and muddy.

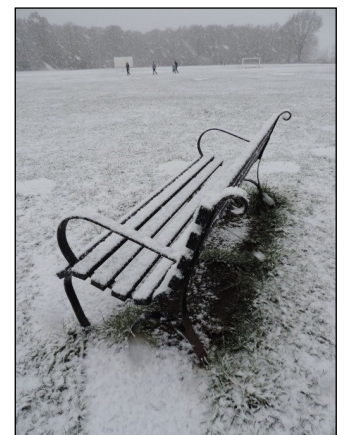


Below Right: Icicles on a garden water feature. Photo: Anne Hunt



Below right: A Wintery Scene Photo: Jackie Bisson

Below left: The Jolly Snowman and Bottom: Having fun breaking the ice! Photos: Angela Stockbridge



WINTERHOUSE SUNSET

The note below was left with this amazing photograph of Winterhouse Sunset and posted through the door of Winterhouse Farm. It was taken last Autumn, but unfortunately we cannot decipher the signature.

If anyone can help identify the signature please let Derek Richardson know. email: derek.richardson@garsons.co.uk as he would very much like to thank the photographer



BACK IN THE AUTUMN, I NOTICED THIS LOVELY
SUNSET - LATE IN THE AFTERNOON,
I ONLY HAD MY PHONE TO RECORD THIS.
THOUGHT YOU MIGHT LIKE A COPY.
H. H. H.

Derek Richardson

TWO BEAUTIFUL MORNINGS OVER CHEQUERS POND



Photos: Peter Bedford

THE WALTON ASTRONOMY GROUP

THE GREAT CONJUNCTION

There were a number of much anticipated events last year, such as the Comet C2019 F3 NEOWISE and the Opposition of Mars.

Similarly for the whole of 2020, many amateur astronomers were eagerly awaiting the Great Conjunction of Jupiter and Saturn which was due to happen in December. A conjunction in planetary terms simply means the appearance of two or more planets in the same area of sky. You can also have conjunctions between planets and the Moon for example. Often these are very beautiful and best to observe with the naked eye, as the planets are too far apart to appear in the same field of view in a telescope.



However, on 21st December 2020, Jupiter and Saturn were due to be approximately 0.1 degree apart, an optical alignment rather than actually being physically close together, but appearing almost as a single bright star to the naked eye.

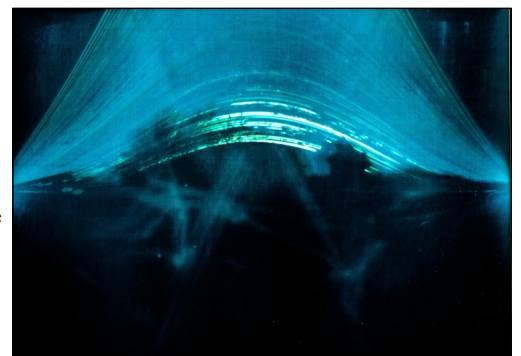
This was not just a one night event though. From early December they were within two degrees of each other, closing together night by night until the closest approach, and then gradually moving apart. As ever, the weather was not kind, and I had almost resigned myself to missing the spectacle. However on 20th December the forecast looked good, and being a Sunday I was able to setup early and be ready in good time. The planets were low, and set quite early so the best viewing time was just after sunset for an hour. Best of all they were only 0.15 degrees apart, very nearly at their closest.

The forecast was correct for once, and I had a wonderful hour from around 4pm until just after 5pm, following the two gas giants as they moved across the gap between trees and houses from my back garden. Through the scope I was able to clearly see Jupiter's two main cloud belts and its four moons, whilst Saturn's lovely ring system was also on show. I managed a few snaps with a DSLR through the scope which came out surprisingly well given the brightness of the sky. So, although I didn't catch them at closest approach, I still felt privileged to have witnessed another amazing event in the night sky. My little six year old daughter was also able to get a good view through the scope which made it all the more special.

SOLAR HIGHS AND LOWS

The following day marked the Winter Solstice which is the shortest day, and also when the Sun is lowest in the sky. It also marked the end of a six month experiment I

had been doing, using a piece of kit called a SolarCan. This is essentially a pinhole camera in a can which you leave out for an extended period to capture the track of the Sun. Mine had been up since the Summer Solstice, so in theory I had captured the full range of high to low for the Sun's path.



I opened the can up in a darkened room, carefully removed the photographic paper and scanned it. What looked quite ordinary at first glance, turned into an amazing image once the colours were inverted and a little processing done. I'm delighted with the result, and will certainly repeat the experiment at some point in future.

Lockdown has been a difficult time for us all, but many people have turned to astronomy as a hobby to keep their spirits up. If you are just starting out then please do get in touch; it would be fantastic to meet some new faces once restrictions are finally lifted.

Stuart Davis, Chair

THE ELMBRIDGE PARKING REVIEW

The following is an extract from the Elmbridge Parking Review 2019/2020 Decision Report:

Winterdown Road, Garson Road, and Winterdown Gardens

There were 23 objections to the proposal and 6 letters of support.

The proposals have been amended to take into account some of the objections. Comments were made regarding the impact of Garsons traffic but the response is that this is outside of the scope of the parking review. The salient section of the report is on page 16. There is also a link to drawing number 17 which shows the amended proposal which is a reduced scheme focused on the junctions of Nightingale Road and Garson Road.

The majority of responses were from Winterdown Road residents. The main concern was that properties do not have off-street parking and the residents needed to park their vehicles on the street.

Many felt that the problems were most acute when Garsons is busiest, i.e. on the weekend, and not during the week or overnight and so the 'at any time' restrictions were unduly restrictive.

There is speculation that the grasscrete areas on the south side of the road were originally intended to be used as 'passing places' not parking places. As residents and visitors have taken to parking in these areas, there is a need to provide room elsewhere for passing.

Without some form of restrictions there is potentially a stretch of approximately 140m from the Garson Road junction to the existing double yellow lines at West End Lane junction where passing is impossible. This is far too great a distance for motorists to be able to judge the need to stop and give way for those coming the other way, and this creates significant problems for traffic flow, particularly as groups of six or seven cars regularly pass through in one 'train' during the busy times.

The proposals are simply designed to provide a passing place at Nightingale Road junction, and to prevent the opportunity for parking displacement further west along Winterdown Road. In doing so, this provides the secondary benefit of improved sightlines for those joining Winterdown Road from Nightingale Road. Whilst we recognise that residents and visitors value the ability to park on street in this location, the highway exists to provide means of movement of goods and people and we have a duty to maintain a safe highway and manage traffic flow on our network. The highway does not exist to provide parking capacity, and no one has any specific right to park on the road. The County Council has a duty to support residents and businesses, and in dealing with the public highway we must find a balance between all users and uses, with safety being the absolute priority.

In order to reach a better compromise between parking and traffic flow, accounting for the comments received during this process we have decided to go ahead with a much-reduced scheme, as per the revised drawing no 17 (attached).

If you wish to see the report in full go to:

<https://www.surreycc.gov.uk/roads-and-transport/parking/local-news-and-updates/elmbridge/review-2019-20>

Mark Bisson

INDY'S MARCH DOG BLOG

What happened to Christmas?? The usual nice visitors didn't come and I didn't get the bonus tit-bits handed to me under the table. I did still get a turkey dinner but with no brussel sprouts because my mummy said something about the wind but I don't know what that means. The least said about the wind and Christmas is the better, I think. I am already looking forward to next year; let's hope more people turn up!!

I am happy to report a new best friend moved into our road in December, his name is Hamilton or Hamy for short. He is a French Bulldog and cuts a dash in his red jacket. Hamy is small but really good fun to run around with, although rubbish at playing hide and seek as I can always hear his cute snuffling noises.

The most unusual but amazing thing happened at the end of January. I went out for my usual morning constitutional border patrol in the garden and the sky was a most unusual colour. It was bright red, normally a colour reserved for sunset and Hamy's jacket. This was followed by white fluffy bits falling from the sky. My girls were really excited, I didn't know why, but I got excited too! Later in the day when the fluffy white stuff was thick on the road, my girls decided to 'sledge' down our hill and were joined by all the other young humans in our road (socially distanced of course) who also seemed to know what sledging was. Hamy sledged too - he is one crazy Bulldog! My job was to pull the sledges back up the hill. My local dog pack; Apollo, Plover, Sasha, Grady, Lola, Panda, Hamy and me all met up as well and frolicked in the snow - such good fun!! It was the best day ever!

You may have remembered I told you about my old friend Norman? Well his owners have now welcomed a Flat Coated Retriever puppy into their lives called Paddy. He is so much fun and I often see him trying hard to learn to walk slowly on the lead and to sit on command - good luck Paddy with your training! Indy's tip - I found the slower you take to learn these new skills the more treats you get!!

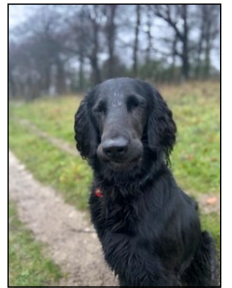
Whilst out on my walks I have met Liza who is one of the prettiest dogs I have ever seen and is very quick on her paws. On the subject of walks I have to mention mud. I know it comes up every year but I think you will agree, this year has been particularly squelchy and whilst it's fun to jump in, it does mean the bath of shame afterwards. Mind you, my Mum - my did a mud face plant when we were out for a run and I had to stifle a smile!

Has anyone noticed the arrival of a rather nice smelling van every Thursday and Sunday on the green? It certainly attracts my attention as anyone who knows me well can confirm that my favourite food is pizza oh and sausages, maybe cheese, umm actually I think it's steak or cucumber ...but it could be chicken then actually..... I just love food but I digress, this delicious van serves wood fired pizzas and my girls call it Dough Shack - yummy!

I look forward to the Village Club with its cafe and the Prince of Wales being open (I hope they will still have the Dog snacks), the ice cream van, (doggy ice cream is lip smacking good) going to Garson's (love sniffing around the pet section), cricket on the green instead of the seagulls paddling pool, sunshine, the village show (the highlight being the dog show!) and NO MUD!

Don't forget, if you see me, please paws to say hi, (you might get a mention in the Summer edition of the West End News, when I next put paw to paper). I am the Flat Coated Retriever with the pretty turquoise collar.

Indy. 



LITTER BUGS PLEASE READ THE SIGNS — TAKE YOUR LITTER WITH YOU DON'T TOSS YOUR DOG POO BAGS IN WEST END!



Above: Overflowing bins. This one is near Black Pond, but many in West End are unsightly too.
Photo: Jackie Bisson

Right:
Our local ice cream van's new colourful livery!
The Dough Shack also visits now on a Thursday and Sunday!
Photo: Ken Berry





Claremont Fan Court School

An independent co-educational school for pupils aged 2½ to 18 years



Pre-Preparatory, Nursery and Forest School



Our wonderful school is set in 100 acres of Esher's beautiful parkland, where children grow and develop in a secure and healthy environment.

Please contact us to arrange a visit.



claremontfancourt.co.uk | 01372 473780 | admissions@claremont.surrey.sch.uk

Brodie & Hickin Landscapes

Est. 1980

- Patios • Driveways • Brickwork • Fencing • Ponds • Turfing
- Decking • Pergolas • Tree Surgery • Planting Schemes

Urban Gardens to Large Estates - Fully Qualified Team - Fully Insured

We pride ourselves on being Reliable, Friendly & Efficient

Please call for a FREE estimate

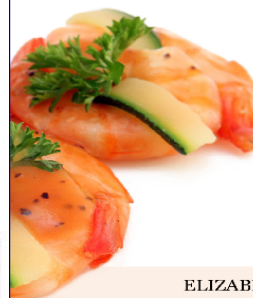


Phone: 020 8398 5000

www.bhlandscapes.co.uk • Email: info@bhlandscapes.co.uk
64 Couchmore Avenue, Esher, Surrey KT10 9AU



Bespoke Catering Of Formal & Informal Events



- WEDDINGS
- MEMORIALS
- CELEBRATION PARTIES
- CHRISTENINGS
- CORPORATE EVENTS
- HOUSE WARMING PARTIES
- THEMED PARTIES
- SMALL PRIVATE FUNCTIONS
- DISHES AND PLATTERS

ELIZABETH TRELIVING

HOME COOKING BY ELIZABETH

The Showroom 1 Church Road Great Bookham KT23 3PD

T: 01372 453206 M: 07712 760175 E: ejtreliving@aol.com
Or visit our website www.homecookingdirect.co.uk



Alan Greenwood & Sons

Independent Family Funeral Directors



A Traditional Family Owned Local Company
Jaguar or Mercedes Hearses and Limousines
Funerals from £950

13 Molesey Road, HERSHAM, KT12 4RN

01932 260 046



Please Visit Our Website for Full Details of our other Branches and Services
www.alangreenwoodfunerals.com



VILLAGE NEWS WEST END

Please make a diary note of the copy dates for the next two editions

SUMMER 2021:

Friday 18th June by 1pm

AUTUMN:

Friday September 3rd September by 1pm

Please contact Angela Stockbridge

Email: angelastockbridge1115@gmail.com

07817 498531 or 01372 460703

The Village News is supported by local organisations including: West End Village Club, West End Motor Club, the West End Village Show Committee, Garsons, Winterdown WI, Richard Gale, West End Village Hall Committee, the former West End Residents' Association, Advertisers and personal donations. Please note the newsletter can also be found on Garsons website www.garsons.com Community Page, www.AFCWestendwebsite.com and West End Facebook Group

We thank you all for your continued support.

Wheatley & Sons Limited
ESTABLISHED 1850

ESTABLISHED 1850. Telephone - 173 P.O. KINGSTON.

BRIDGE ROAD, EAST MOLESEY, and HIGH STREET, ESHER.

WHEATLEY & SONS,
(Successors to J. Wheatley & Sons, Ltd.)

Builders, Contractors, & House Decorators.

GAS, HOT WATER and SANITARY ENGINEERS, PLUMBERS, GLAZIERS, and BELL HANGERS.

Jobbing Work of every description with Bricklayers, Plasterers, Carpenters, Cabinet Makers, Painters, Paperhangers, Glaziers, Gilders, Plumbers, Gas and Bellfitters, Tinmen, Smiths, &c.

Carpets taken up, Beaten and Relaid. Stoves and Ranges Supplied and Set. Boilers Cleaned. Kitchen Utensils Retinned.

HOUSE DRAINAGE & VENTILATION A SPECIALITY. DRAIN TESTS AND REPORTS.

PLANS prepared and advice given upon all matters connected with New Buildings, Additions, Alterations and Repairs.

FUNERALS FURNISHED in best style and conducted to any part of the country. Cremations arranged. Monuments, Brasses, Memorial Windows &c.

HOUSE & ESTATE AGENTS. FIRE & LIFE ASSURANCE. RENTS COLLECTED. VALUATIONS FOR ALL PURPOSES.

NO JOB TOO SMALL

Telephone 020 8979 5762

Fax: 020 8941 7388

Email:

wheatley_sons@btconnect.com